

Sywell 2008 Display Routine

Avro Lancaster & Airspeed Oxford

1 DEPARTURE

The Lancaster departs from Bruntingthorpe at exactly the same moment as the Oxford departs from Leicester.

2 THE OXFORD'S ROUTE

After a left turn out from runway 28, the Oxford routes direct from Leicester to Kettering Telford Industrial Estate at 1500 feet QNH travelling at 100 knots. The Oxford arrives at Telford Industrial Estate 10m 12s after take off and crosses the Sywell downwind threshold of runway 21, 13m 45s after take off.

3 THE LANCASTER'S ROUTE

The Lancaster departs from runway 24 and climbs straight ahead to 1000ft QNH then makes a climbing left turn to 2000 feet QNH and tracks towards Eyebrook Reservoir, northwest of Corby on a heading of approximately 085° depending on the radius of turn during the climbout from Bruntingthorpe. Airspeed is 150mph. With CAVOK set in FSInn the two aircraft can see each other almost from the time of take off. Near Market Harborough, the Oxford passes beneath the Lancaster from east to west.

Abeam Eyebrook Reservoir and just under 2 miles south of it, the Lancaster turns onto a heading of 115° towards an industrial estate on the north side of Corby south of a large wooded area called Brookfield Plantation.

It crosses the southern edge of this Industrial Estate, parallel to the A6116 at this point, then turns onto 205° direct towards Sywell on the extended centreline of runway 21. Deenethorpe RAF base is just 3 miles beyond this turning point on the 115° bearing. The track takes the aircraft directly over Telford Industrial Estate 11 m 10s after take off. Now with the Oxford observed directly ahead at a range of approximately 2 miles (1m 13s) the Lancaster uses its superior speed to close the gap and follow the Oxford over the threshold between 15 and 20 seconds later. Keeping behind the Chipmunks which are formatting on the Oxford. Elapsed time is between 14minutes and 14minutes 10 seconds after take off,

4 THE 14 MINUTE CIRCUIT

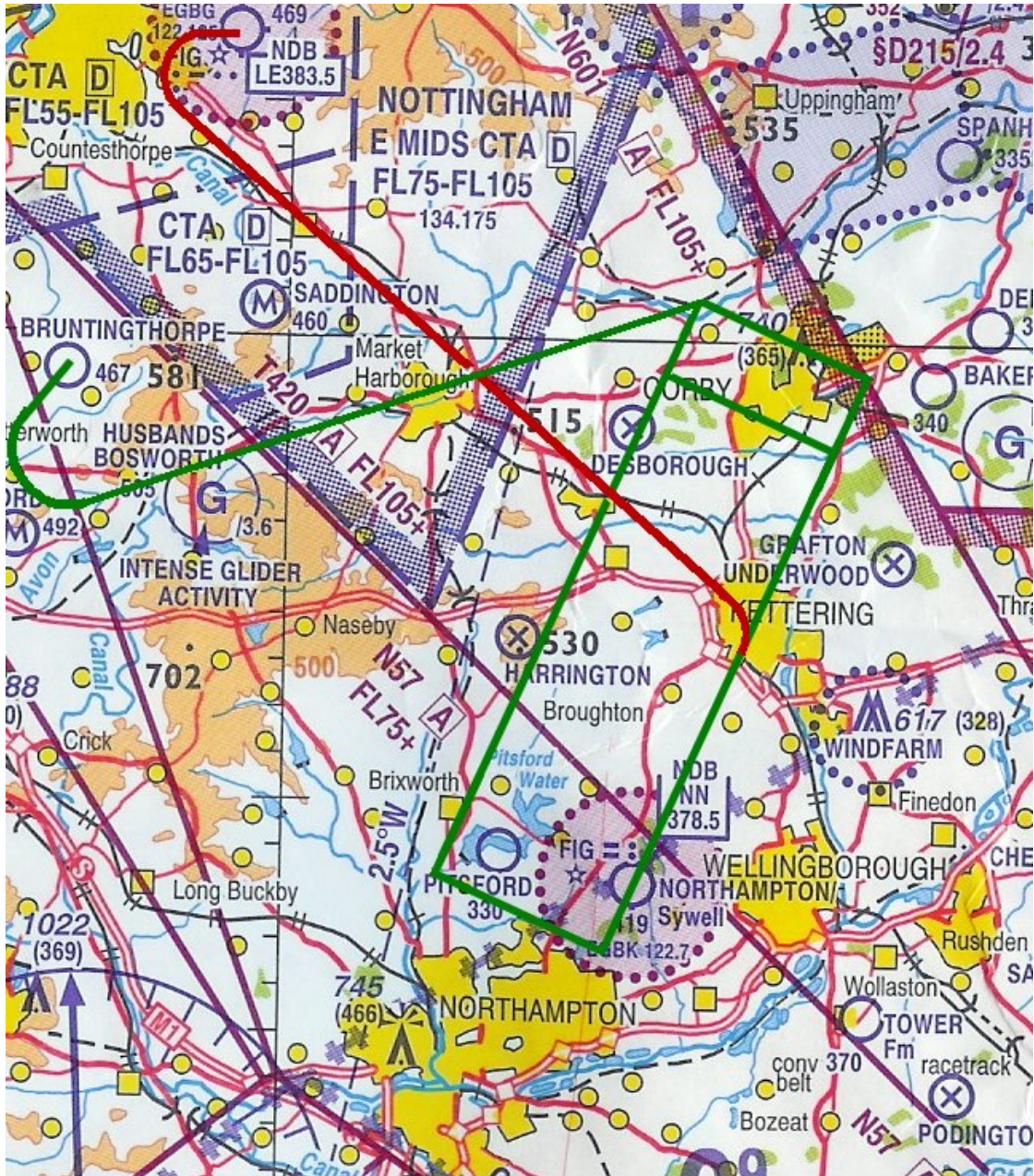
From overhead Sywell, the Oxford and the Lancaster turn right heading 295° to Pitsford Water. Keeping west of the causeway they commence the turn overhead the lake with the Oxford in the lead.

Overhead Pitsford Water the two aircraft turn right heading 025° and continue at 1500ft QNH and 150mph. They pass over the easterly fringes of Desborough Town and then the eastern perimeter of the disused Desborough airfield (still visible in the VFR scenery).

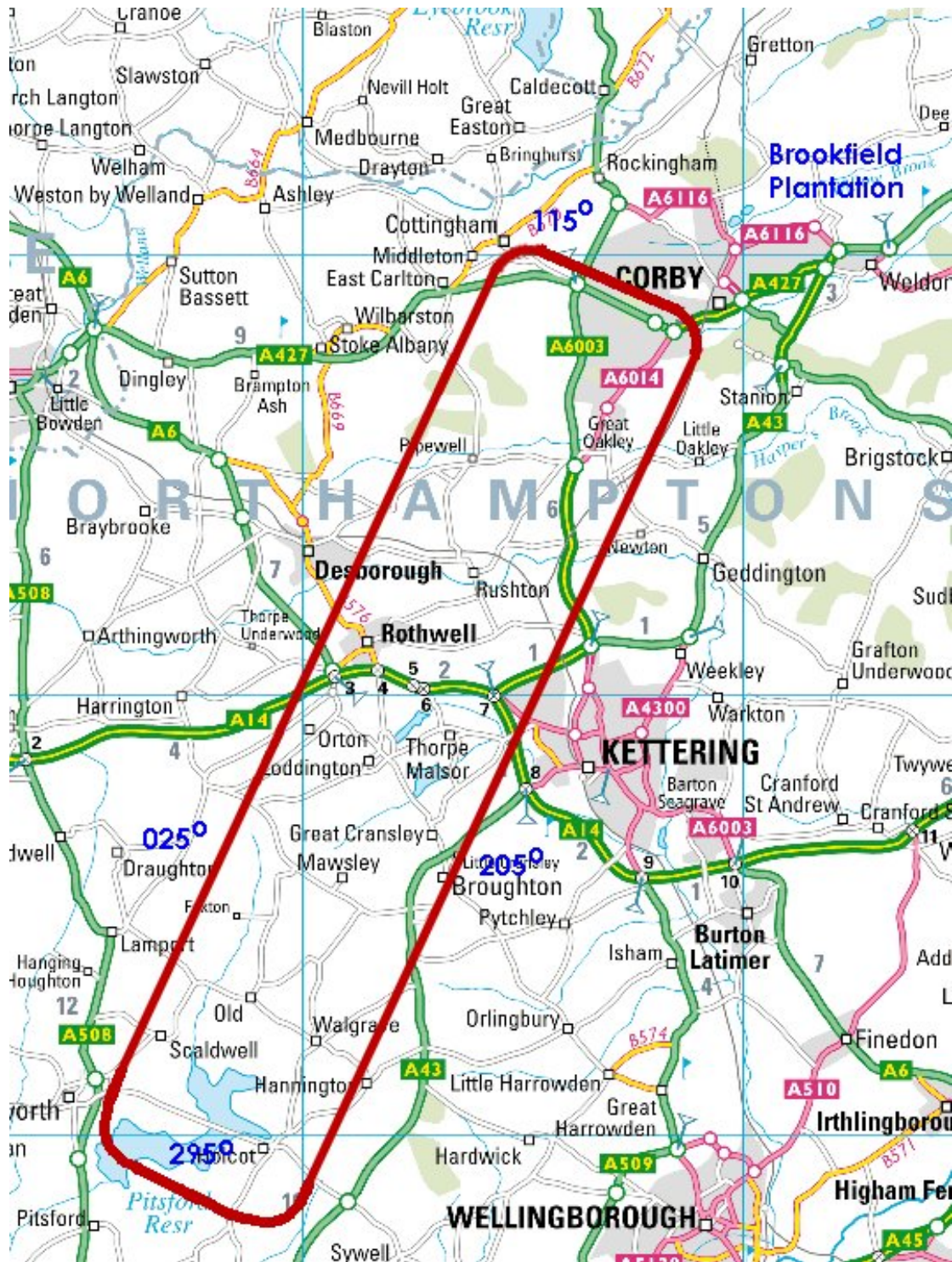
The Lancaster follows the Oxford at a range of approximately 1 mile. As the Lancaster arrives west abeam the southern edge of Corby, and crosses the A427, both aircraft turn together heading 115° on the Lancaster's pilot's call and cross over a distinctive large parkland area in the centre of Corby. Both aircraft again turn simultaneously after the Lancaster crosses the north-south railway, on a further call from the Lancaster pilot, which now puts the Lancaster ahead of the Oxford, still at a range of approximately 1 mile.

Both aircraft continue on heading 205° to Sywell, passing overhead Kettering Telford Way Industrial Estate after which the fighters formate on the Lancaster and the Chipmunks formate on the Oxford.

All aircraft return to Bruntingthorpe.



The route of both aircraft after take off shown on the half-million aviation chart (not to scale)



The 14 minute circuit shown on a road map