

NOT FOR REAL WORLD NAVIGATION

PEGAM 2A, PEGAM 2B

(RWYS 08 and 26)

COPTERSID ESBJERG, DENMARK

EKEB

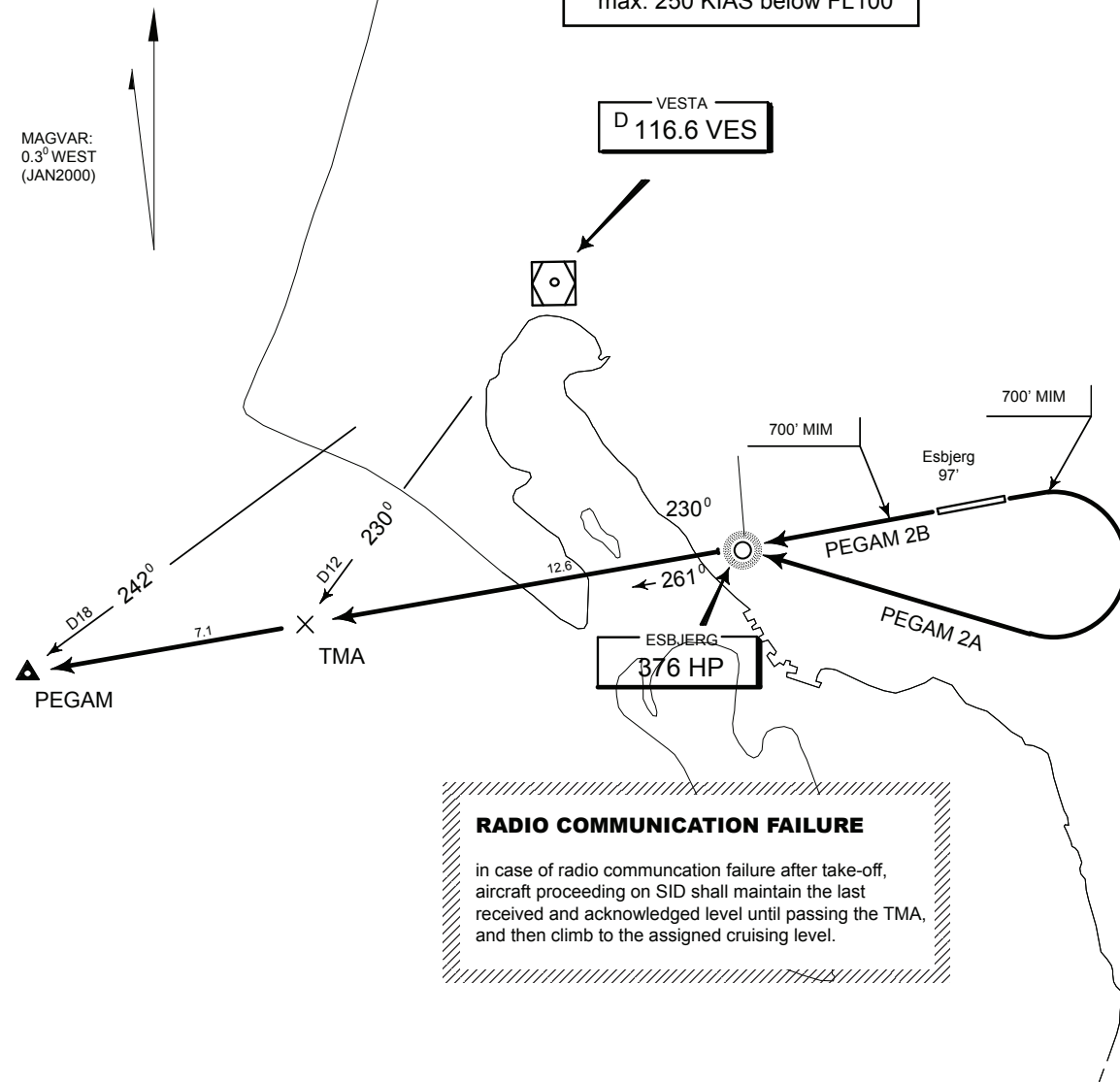
TRANSLEVEL: BY ATC
TRANSALT: 3000'

MAGVAR:
0.3° WEST
(JAN2000)

SPEED RESTRICTION

max. 250 KIAS below FL100

VESTA
D 116.6 VES



Climb Out

MAX IAS 085 KT and MNM climb gradient 1000 FT / MIN until 2000 FT MSL. If unable advise ATS.

Special Departure Instructions

Instructions containing deviations from SID may be included in the ATC clearance issued prior to TKOF. Such deviations may comprise temporary altitude restrictions and specified headings. Heading deviations below 700 FT MSL shall not be initiated.

Radio Failure

In case of radio communication failure after TKOF, aircraft proceeding on a SID shall maintain the last received and acknowledged level until passage of the TMA exit point, and then climb to the assigned cruising level.

PEGAM 2A

Climb straight ahead to MNM 700 -
right climbing turn to HP - 260° -
PEGAM

PEGAM 2B

Climb straight ahead to MNM 700 -
HP - 260° - PEGAM