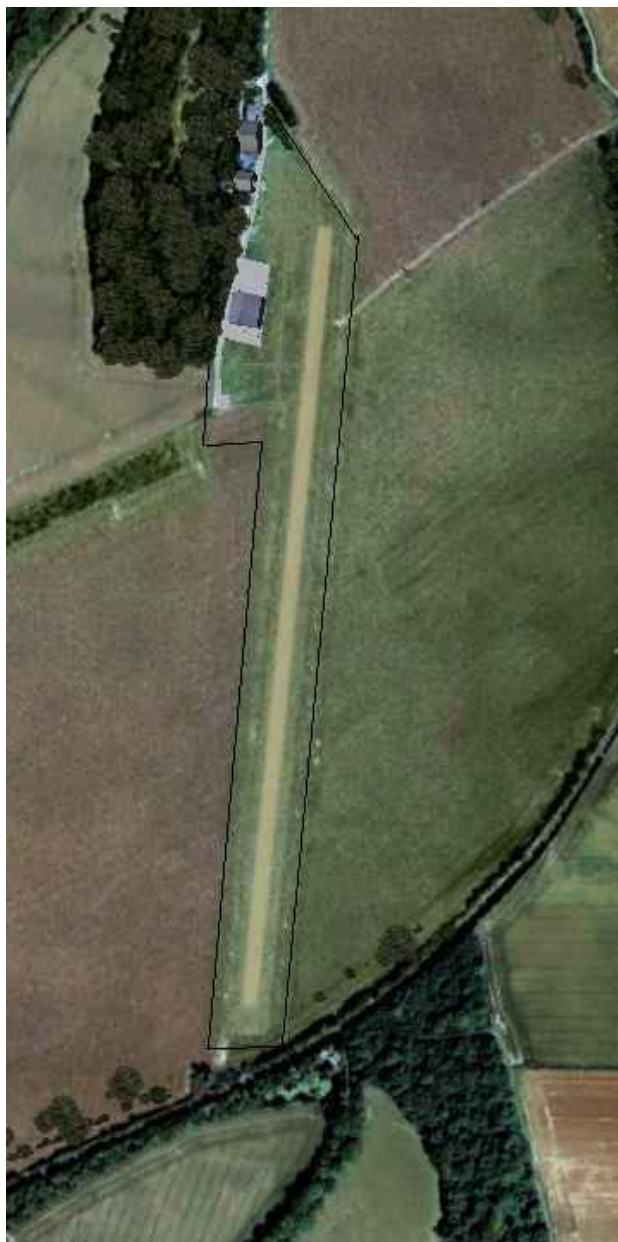


AIRFIELD NAME and ICAO		May 25	AUDLEY END			EG20	Central
CALLSIGN (A/C RADIO)		Audley Radio					135.475
CALLSIGN (ES/VATSIM)		EG20_R_TWR					UNLICENSED A/F
LOCATION		Lat N052.00.52.000	Long E000.13.57.000			Elev. 283ft	
LOCATION GEOGRAPHIC		0.5nm SW of Saffron Walden; 1nm E of M11;					VFR Conspicuity ---
CHART SOURCE	RW/FSX Photo	BKY VOR: 116.250. To VOR 262° To A/F VOR 082°; 6nm					QFE=QNH -9 HPscls
METAR AIRPORT		EGSS 127.170	CAUTION; C/L from threshold 36 is 0.3nm from EGSS CTA.				
NAV AIDS		NONE on A/F	DO NOT overfly local habitation below 1,500ft.				
RUNWAY (UNMARKED)		Headings	Dimension	Surface	Departing Runway 18, make an immediate turn onto 235° to avoid Stansted CTR		
		18/36	800M x 11M	Grass			
AIRSPACE/TRANS ALT QNH		CLASS G	Transition level 6000 ft		Airspace above is Class D; EGSS CTA A2500+		
CIRCUITS HEIGHT / DIR.		ALL circuits to the WEST @ 1000ft QFE (A1300). 18 dep. & 36 ARR. CAUTION CTR.					
NO FLY AREAS	Stansted CTR and CTA (base at A2500). LOCAL RESIDENTIAL AREAS						
LOCAL HAZARDS	A/F (threshold 36, centre line) is 0.3nmNW of Stansted CTR & under the CTA. SAFFRON WALDEN below A2000ft; Villages and farms within 2.5nm, NOT BELOW 1500QFE						
HELICOPTERS	NO FACILITIES, NO PARKING.						
SPECIAL RULES	The A/F is within the Stansted Mandatory Transponder Zone. ALL A/C MUST Squawk Charlie.						
REMARKS	Private, Unlicensed A/F. Owned by company specialising in repair and restoration of DHC1 Chipmunks. PARKING IS LIMITED. NO FUEL. VERY tight approach/departure routes						





ALL PILOTS: PLEASE PUT
YOUR A/C CALLSIGN
AFTER YOUR NAME.

**NOT TO BE USED FOR
REAL WORLD
OPERATIONS**

