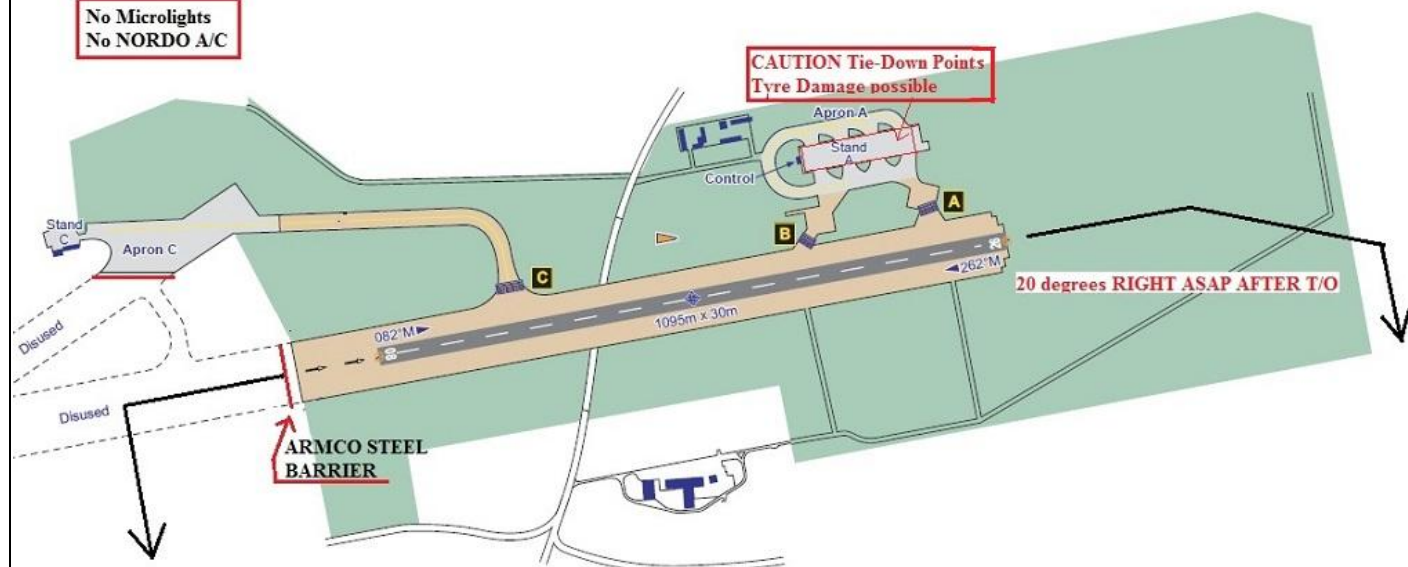


AIRFIELD NAME AND ICAO		September 24	BEDFORD		EGBF	Central
CALLSIGN (A/C RADIO)		BEDFORD RADIO			119.030	
CALLSIGN (ES/VATSIM)		EGBF_R_TWR			Elev. 273ft	
LOCATION		Lat N052.13.57	Long W000.26.44		QFE= QNH -9	
LOCATION GEOGRAPHIC		5nm N of Bedford			EGTC_APP 122.855	
CHART SOURCE		NATS/Jonathan Palmer, Bedford Aerodrome and Motor Sport Vision Ltd. Use of Airfield Publications by kind permission of J. Palmer.				
METAR AIRPORT		EGTC Cranfield 121.880	PLANG AD Coordinates: N052.2325000 W-000.4455555			
NAV AIDS (FSX / PLANG3)		NDB CT 363.5Khz - No longer RW		DME/ ILS 109.750- No longer RW		
RUNWAYS	Headings	Dimension	Surface	Noise Abatement and Notes		
	08 / 26	1095M x 30M	Concrete	Arrivals runway 08 arrival. Departures runway 26.		
AIRSPACE	CLASS	Transition level 6000ft		Airspace above is:- Class C. FL195; see below; Cranfield		
CIRCUITS HEIGHT / DIR.		1000ft QFE	ALL CIRCUITS TO THE SOUTH. 08 RH; 26 LH.			
NO FLY AREA		SEE CHARTS BELOW. AVOIDANCE OF INDICATED AREAS IS MANDATORY. ALL AC; USE STEEP APPROACHES/DEPARTURES WHERE POSSIBLE				
LOCAL HAZARDS		NO RUNWAY/TAXIWAY/APRON LIGHTING. ARMCO BARRIERS PROTECT THE VEHICLE PARKING AREAS OF THE OLD BAE AD. - SEE CHARTS BELOW. INSTRUMENT APPROACH TO EGTC CRANFIELD PASSES OVERHEAD AT A2500ft. STAND A HAS 'TIE-DOWN' POINTS WHICH COULD DAMAGE AC TYRES. Use taxiways				
HELICOPTER OPERATIONS		NOT APPLICABLE. Helipad available NW of AD, as shown.				
SPECIAL RULES	ALL TYPES OF FLYING TRAINING/PRACTICE IS PROHIBITED. NO NORDO A/C or MICROLIGHTS THIS DOCUMENT IS ESSENTIAL READING, BEFORE FLYING INTO/OUT OF BEDFORD AD.					
	VISITING AC SHOULD CONTACT CRANFIELD APPROACH 122.850 FOR COORDINATION. ALL ARRIVALS should contact Cranfield Approach on 122.850 not less than 10dme ALL ARIVALS to call Bedford Radio NOT LESS than 5dme. Preferred parking is Apron A.					
	Preferred runway use: Arrivals 08; Departures 26. The noise abatement routes are MANDATORY. When departing runway 26, climb STRAIGHT AHEAD to A1000ft before turning on course. Remain well clear of Cranfield Airspace.					
REMARKS	For the inexperienced pilot, Bedford could be very challenging, SHORT runway; Difficult approach; possible traffic at A2500ft; AG(R)O A/F; NO radio Nav aids (RW). Please read this carefully, first.					

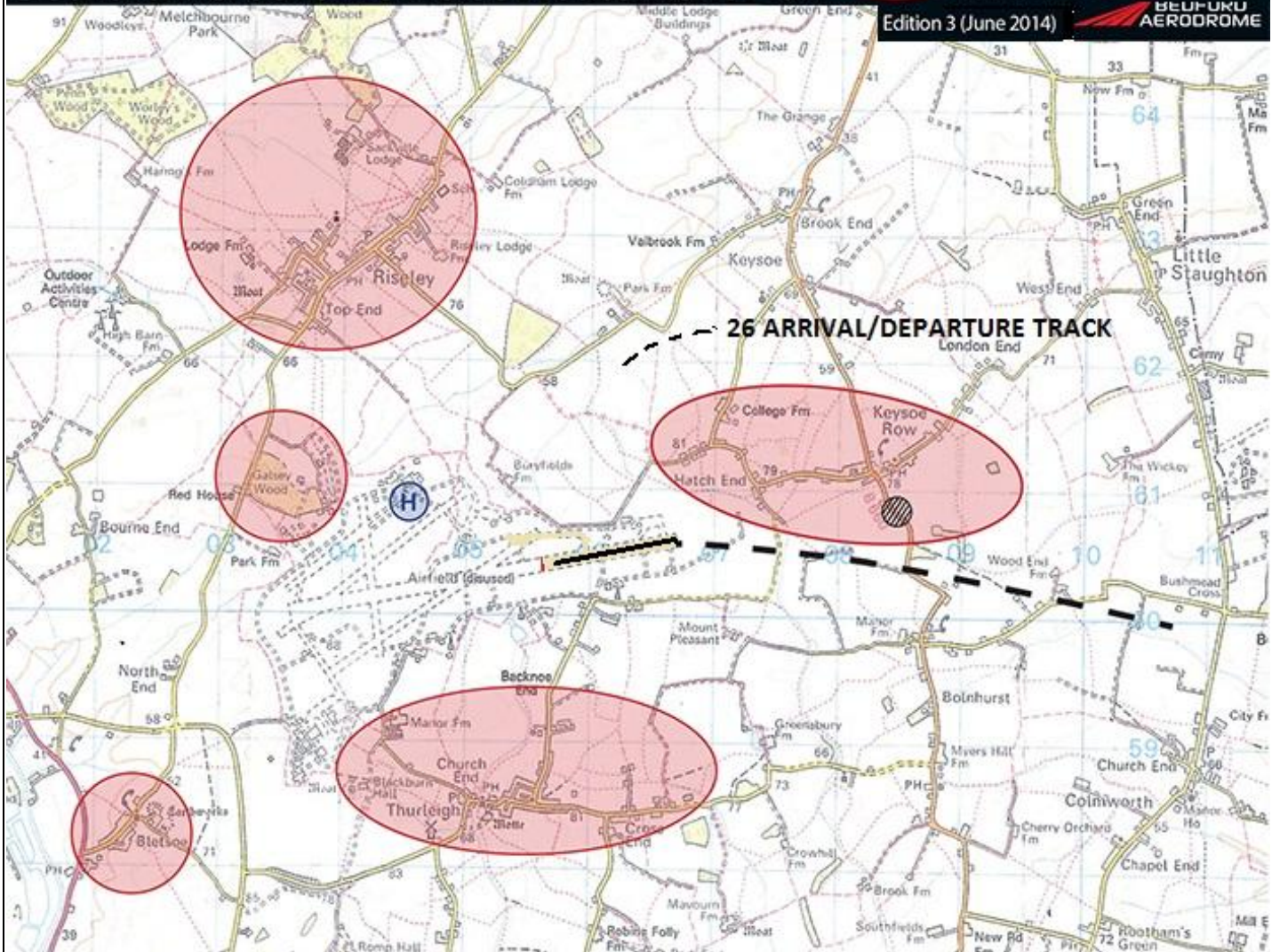
**ILS APPROACH TO CRANFIELD IS O/H AT 2500FT.
CONTACT CRANFIELD APPROACH, 122.85 FOR TRAFFIC CO-ORDINATION**

**No Microlights
No NORDO A/C**

**CAUTION Tie-Down Points
Tyre Damage possible**



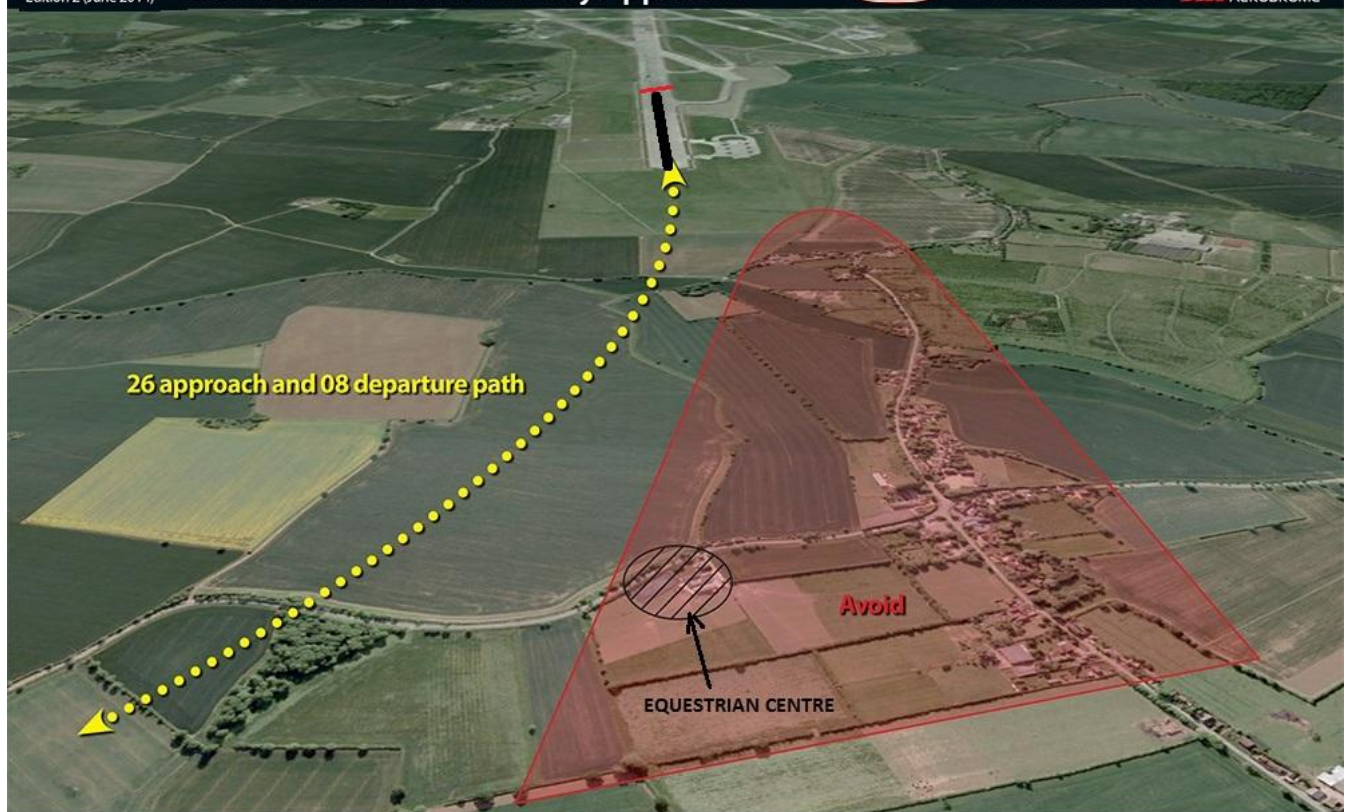
Avoid shaded areas

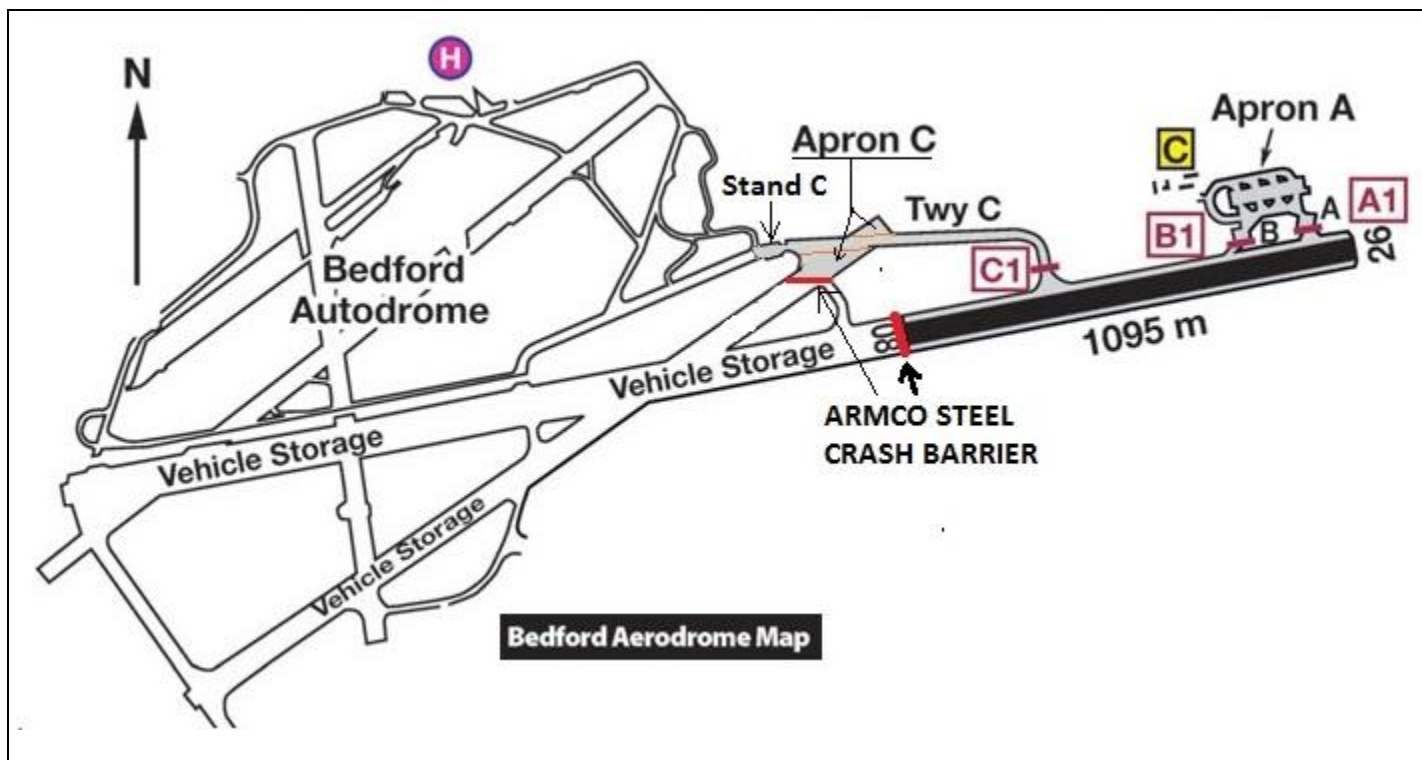
BEUFUKU
AERODROME

Avoid shaded area



**BEDFORD
AERODROME**





ALL PILOTS: This is a challenging airfield.

REMEMBER. The AGO CAN ONLY pass traffic information RECEIVED from PILOTS.

If you do not report what you are doing, the AGO cannot advise other A/C.

So, keep him informed of your actions/intentions. Enjoy.

ALL PILOTS: PLEASE PUT YOUR A/C CALLSIGN AFTER YOUR NAME. **NOT TO BE USED FOR REAL WORLD OPERATIONS**