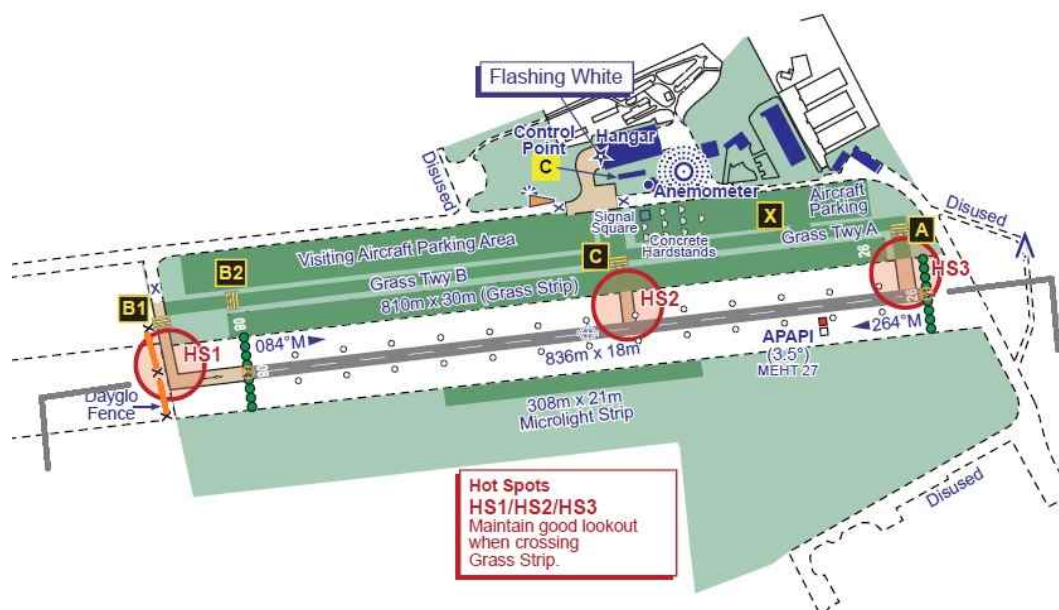
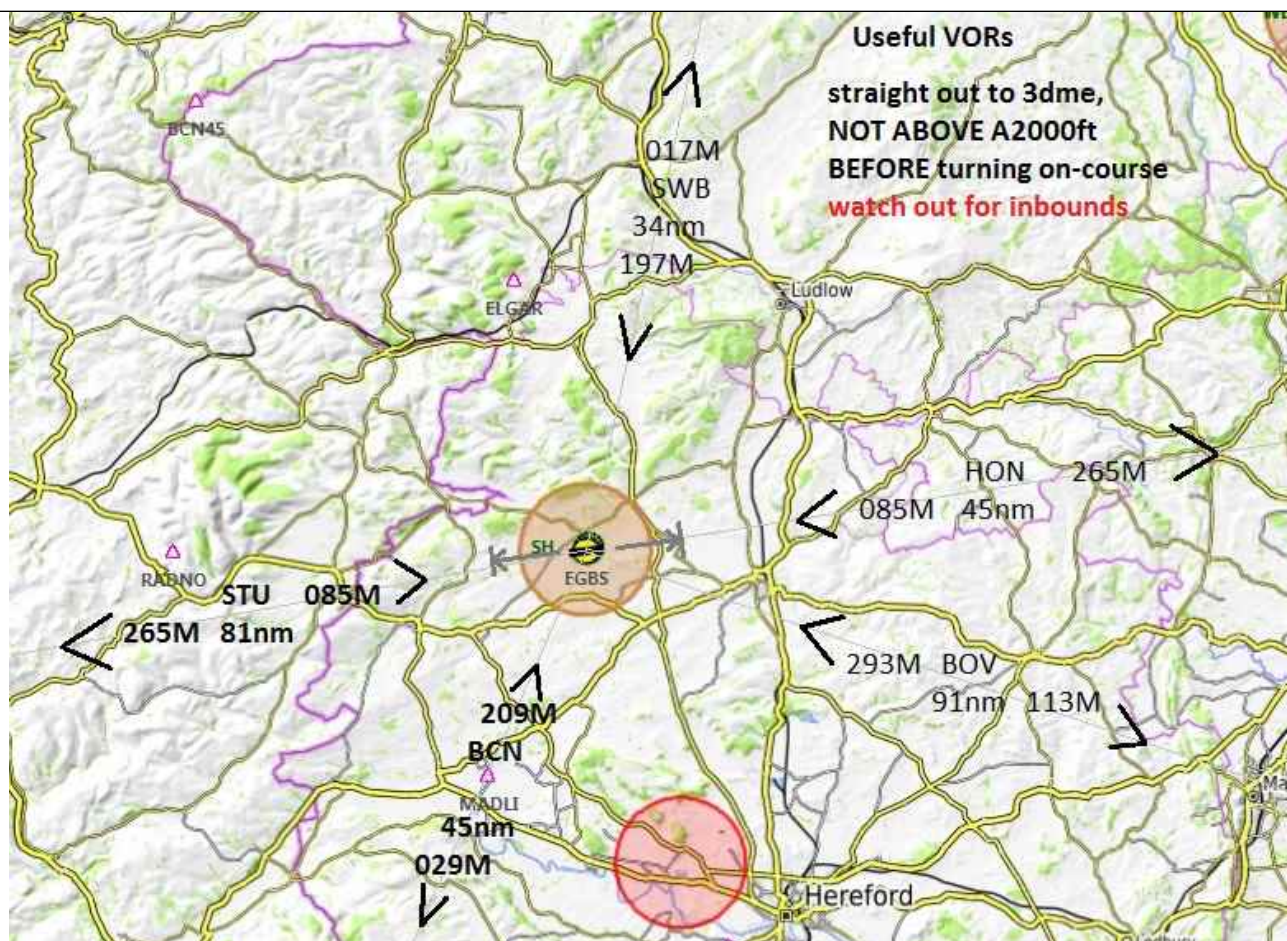
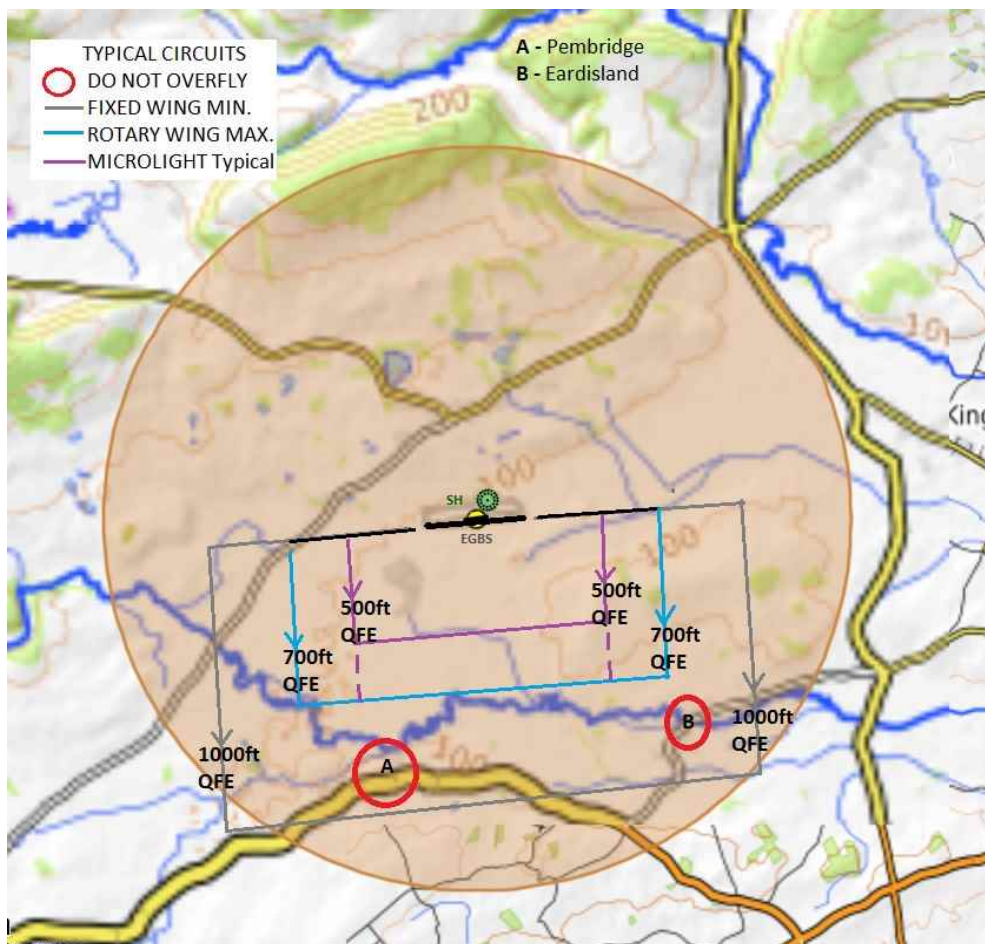


AIRFIELD NAME AND ICAO		January 25	SHOBDON		EGBS	West
CALLSIGN (A/C RADIO)		Shobdon Information			118.155	
CALLSIGN (ES/VATSIM)		EGBS_I_TWR			APP. ----	
LOCATION		Lat N052.14.30.000	Long W002.52.25.000		Elev. 317ft	
LOCATION GEOGRAPHIC		6nm W of Leominster			Conspicuity ---	
CHART SOURCE		NATS	Access to the FUEL BAY crosses a public bridleway. TAXI WITH CARE		App.	
METAR AIRPORT		EGBJ 127.480			QFE= QNH(METAR) -10 HPscIs	
NAV AIDS (FSX / PLANG3)		NDB; SH 426kHz	DME ----	The Tarmac Runway sits on top of the old concrete runway. EXPECT ALL old concrete surfaces to be NON_MAINTAINED.		
RUNWAYS	Headings	Dimension	Surface	ONLY 1 RUNWAY in use at ANYTIME.		
	09 / 27	836m x 18m	Tarmac on concrete	Release it by reporting vacated or airborne		
	09/27	810m x 30m	Grass:- GLIDER Strip.			
	09 / 27	308m x 21m	Grass:- Microlight strip			
AIRSPACE/TRANS ALT QNH		CLASS G	Transition level A3000ft.		Airspace above Class C Base FL195 Lon. FIR.	
CIRCUITS HEIGHT / DIR.		Fxd. Wng. 1000ft QFE Microlts. 500ft QFE Helicopters 700ft QFE Inside GA circuit.	Runway 26 LH. 08 RH. GA A/C 26; climb out beyond Rowe Ditch (hedges @ 0.5nm) turn cross wind, climbing to 1000'QFE; Turn Downwind South of Pembridge (A44) turn Base AFTER passing SOUTH of Earisland. 09; Same pattern, in reverse. E.G. MIN Down Wind range 1.5nm.			
NO FLY AREAS		ALL A/C. Do not overfly Pembridge or Earisland.				
LOCAL HAZARDS		INTENSIVE GLIDING MAY TAKE PLACE ON THE NORTHERN SIDE OF THE AIRFIELD. REMAIN ABOVE 1500FT QFE DEAD SIDE. A boundary fence on the Western edge of the paved taxiway leading to Hold B, infringes the 'taxiway strip' by 5M. Departure from ANY marked Taxiway could be hazardous due uneven/soft/unmaintained surfaces. CAUTION:- Clearance to fence on Taxiway for 08 is 10M.				
HELICOPTER OPERATIONS		Circuit Directions; as Fixed Wing, at 700ft QFE INSIDE the Fixed Wing circuit. Hold point X is for helicopters outbound from Tiger helicopters or as advised - lift E; W; or S Arrivals from North, join Base, Dead side, Others downwind or base, live side ALL below 1000ft ALL out bound, when cleared/lineup from the Grass runway or Main runway, NOT the Glider strip.				
SPECIAL RULES		AT ALL TIMES. ONLY ONE A/C can occupy ANY runway. Including Gliders. Runways are OCCUPIED until DEPARTING A/C are Airborne or LANDING A/C are at safe taxi speed or lower. Glider strip and Microlight Strip are unlicensed				
REMARKS		The Grass Glider and microlight strips are unlicensed. During periods of heavy rain runway is liable to patches of standing water. Departure from marked areas can be hazardous. Taxi Bravo is part paved part grass, to avoid unsuitable paved section.				





PILOTS: PLEASE PUT YOUR A/C CALLSIGN AFTER YOUR NAME. NOT TO BE USED FOR REAL WORLD OPERATIONS