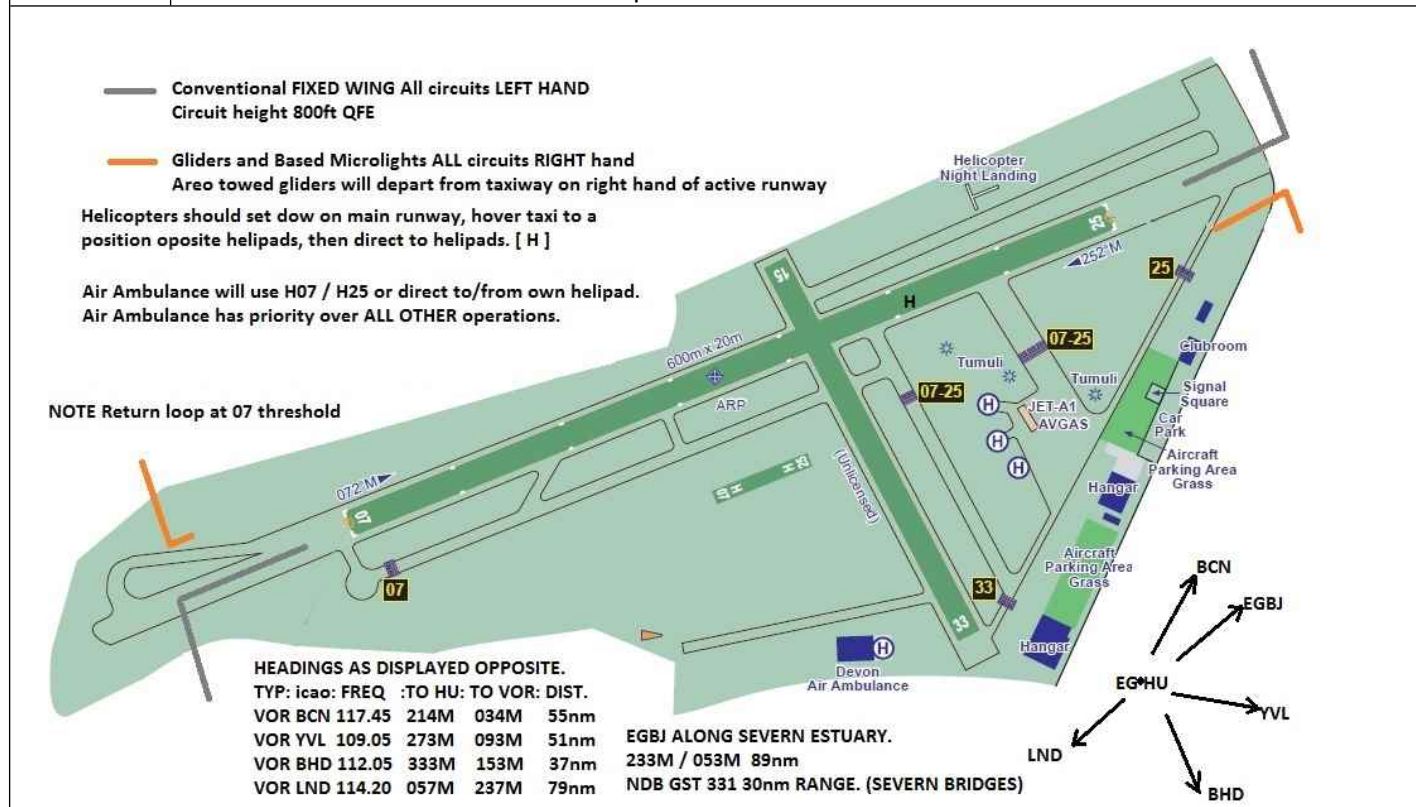


AIRFIELD NAME AND ICAO		January 25		EAGLESCOTT		EGHU		W	
CALLSIGN (A/C RADIO)		Eaglescott Radio					123.010		
CALLSIGN (ES/VATSIM)		EGHU_R_TWR					Ground. ---		
LOCATION		Lat N050.55.43.000			LongW003.59.22.000			Elev. 655ft	
LOCATION GEOGRAPHIC		6nm ESE of Torrington					QFE= QNH -21 HPscIs		
CHART SOURCE		EGHU website/fsx/planG			Overhead join advised if A/F busy or no ATC				
METAR AIRPORT		EGFF Cardiff 123.480			Devon Air Ambulance has precedent over ALL other operations. "All traffic, Air Ambulance departing to North". Means - keep clear of his route and keep a good lookout.				
NAV AIDS (FSX / PLANG3)		NONE							
RUNWAYS	Headings	Dimension		Surface		Gliders and Microlights operate most of the time.			
	07 / 25	600m x 20m		Grass					
AIRSPACE	CLASS G	Transition level 3000ft			Airspace above is Class C Alt 19500 Lon FIR				
CIRCUITS	800ft QFE	GA. LH. Gliders and Microlights RH							
NO FLY	Avoid local villages; Dead side of active runway below 2000ft QFE, within the ATZ.								
HAZARDS	Glider Aero tow launches from grass next to runway - right hand side.								
HELICOPTER OPERATIONS	Helicopters should expect to use H07 / H25, or set down on disused runway and hover taxi to heli pad. Helicopters should remain well clear of taxiing and parked Gliders and Microlights								
SPECIAL RULES	Not licensed for public transport use and w/ends, unless arranged. (PPR) VFR ONLY; No AGRO A/F is CLOSED. REMAIN CLEAR of radar site to North East								
REMARKS	Fuel is available. There are 4 farm-strips within 10nm								



PILOTS: PLEASE PUT YOUR A/C CALLSIGN AFTER YOUR NAME. NOT TO BE USED FOR REAL WORLD OPERATIONS