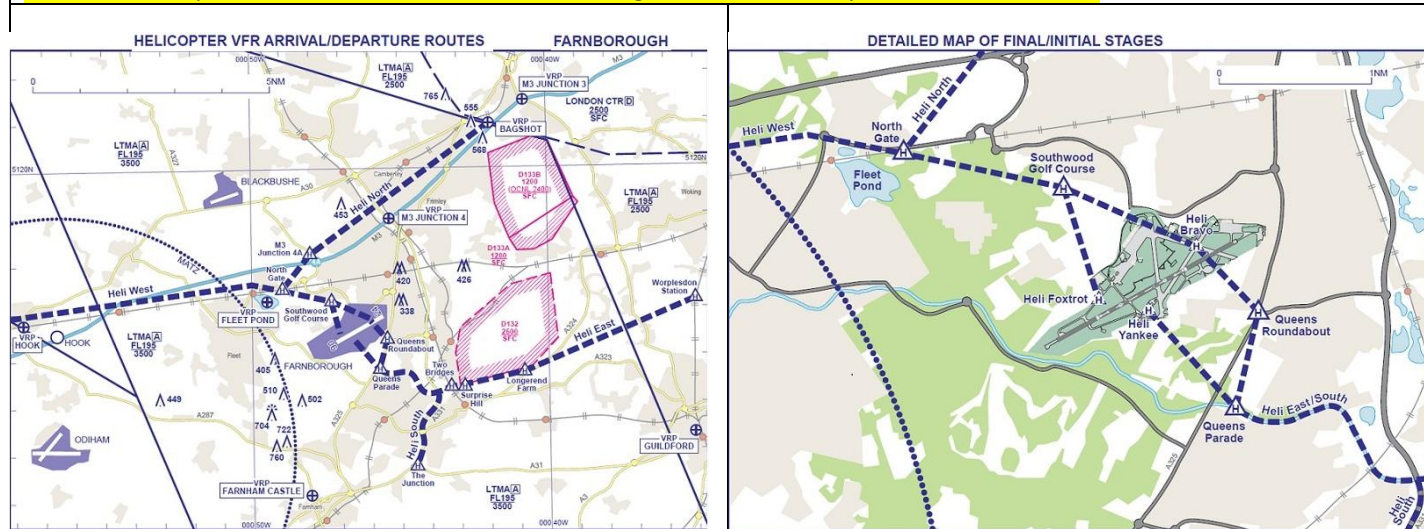


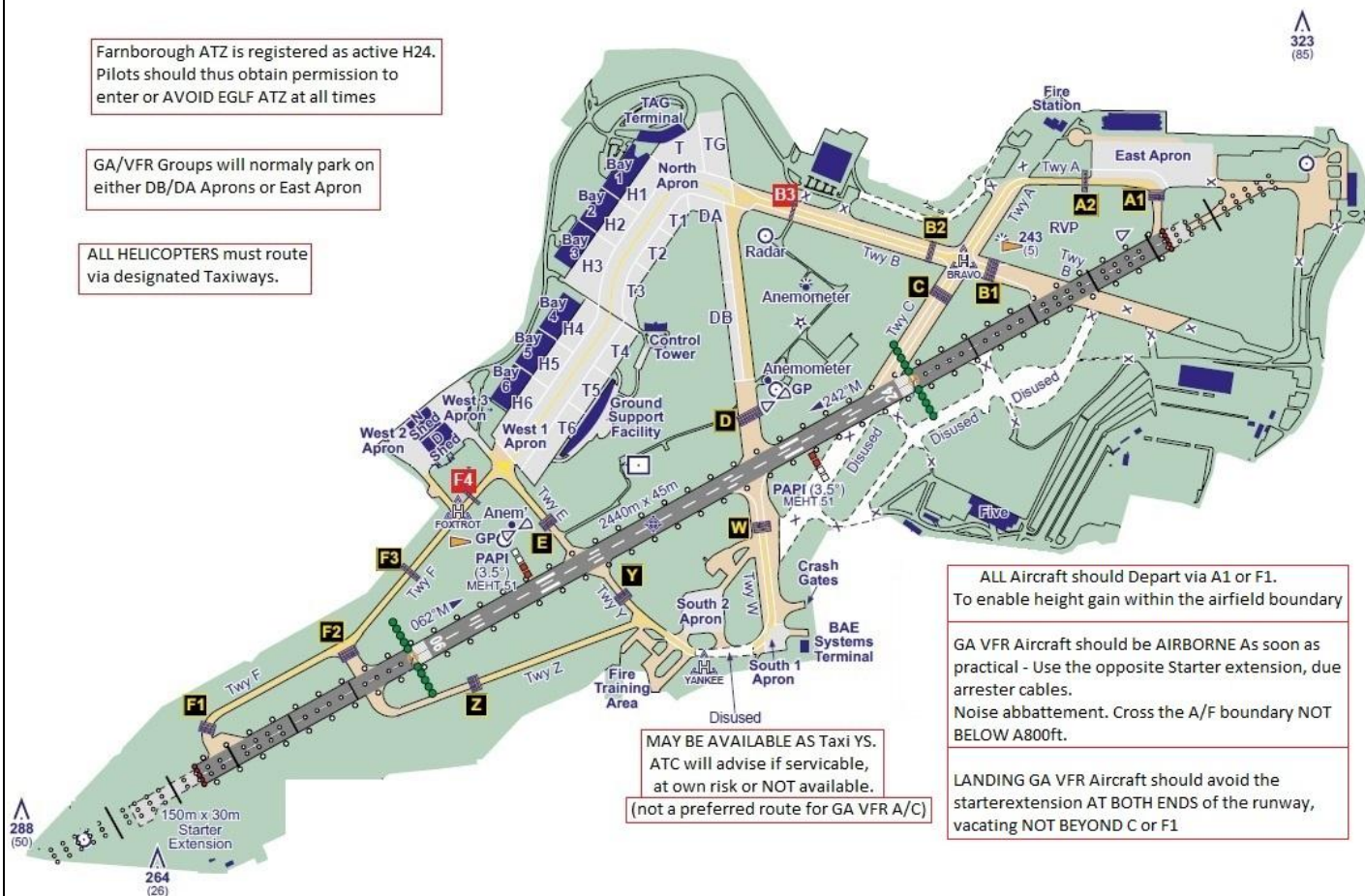
AIRFIELD NAME		December 24		FARNBOROUGH		EGLF	South
CALLSIGN		Farnborough Tower				122.780	
CALLSIGN		EGLF_TWR				Ground. 121.815	
LOCATION		Lat N051.16.31.000		Long W000.46.39.000		Elev.238ft	
LOCATION GEO.		1nm NNW of Aldershot				Conspicuity	
CHART SOURCE		NATS	ILS 111.550MHz	LARS 125.250; RADAR 134.355; Director 130.055 [25nm/6,000ft]; .			
ATIS AIRPORT		EGLF 128.405		Disused taxiways South of runway & East of taxi W, are used for parking display A/C during annual SBAC Air Show. Unsuitable for A/C at other times due probable FOD. Departing GA VFR A/C; Use full length of starter, Cross A/F boundary. Above A1000'			
NAV AIDS		ILS 115.550MHz.					
RUNWAY	Headings	Dimensions	Surface	Disused taxiway connecting South end of Taxi W and Taxi Y. May be available as YS. ATC will advise. Else do not use.			
	06 / 34	2440m x 46m	Asphalt				
AIRSPACE	CLASS G. Trans level 6000ft			Airspace above is Class A. A3500+ Class A London TMA.			
CIRCUITS	1000ft QFE		All circuits to SOUTH. 06 RH. 24 LH. SEE SPECIAL RULES.				
NO FLY	Oakhanger HIRTA: High Intensity Radio Transmission Area. 8nm South, NOFLY 3nm radius Sfce - A10500. NOTE Oakhanger is a Satellite Control Station. Emissions are dangerous to A/C within 3nm. AVOID BUILT UP AREA 2nm WEST BELOW 1000ft QFE (1700ftQNH). NOT WITHIN 2.5nm OF LASHAM BELOW 5000ftQNH.						
LOCAL HAZARDS	Both runways have long starter extensions, Liable to have arrester wires deployed at any time. DO NOT USE FOR LANDING. Use with extreme caution AT ALL OTHER TIMES. A/C inbound to runway 24, NOT BELOW 3.5° Glide Slope to avoid danger areas. Traffic inbound to Odiham, instrument approach to 27 will pass within 2.5nm South of A/F as low as 1500ft. Caution Birds, including Geese and Herons.						
HELICOPTER OPERATIONS - With Approach/departure routes Taxiway Delta is available for Helicopters taxiing to DELTA ramp ONLY. GA/VFR helicopters MUST follow EITHER FW Routes or Helicopter routes and VRPs.							
SPECIAL RULES	EFATOs, 06 departures, STRICTLY FORBIDDEN. A/C requiring Licensed A/D. West 2 Apron not available ALL DEPARTURES. ALL A/C to complete T/O checks BEFORE entering runway. Runway 06. Climb STRAIGHT AHEAD to 2dme BEFORE turning on course, or as instructed by ATC. Runway 24. Northbound. Climb STRAIGHT AHEAD to 2dme BEFORE turning on course. Southbound. Climb straight ahead to 1200ft QNH, turn LEFT to 220°M to 2DME, or as required to avoid ODIHAM ATZ and Gliding areas, before turning on track. ALL VFR ARIVALS – Including CIRCUIT TRAFFIC. DO NOT join final BELOW 1000ft QFE. DO NOT DESCEND BELOW GLIDE PATH, USE PAPIs OR ILS.						
	HELICOPTER OPERATIONS - With Approach/Departure routes Taxiway Delta is available for Helicopters taxiing to DELTA ramp ONLY. GA/VFR helicopters MUST follow EITHER Fixed Wing Routes or Helicopter routes and VRPs.						



Farnborough ATZ is registered as active H24.  
Pilots should thus obtain permission to enter or AVOID EGLF ATZ at all times

GA/VFR Groups will normally park on either DB/DA Aprons or East Apron

ALL HELICOPTERS must route via designated Taxiways.



ALL Aircraft should Depart via A1 or F1.  
To enable height gain within the airfield boundary

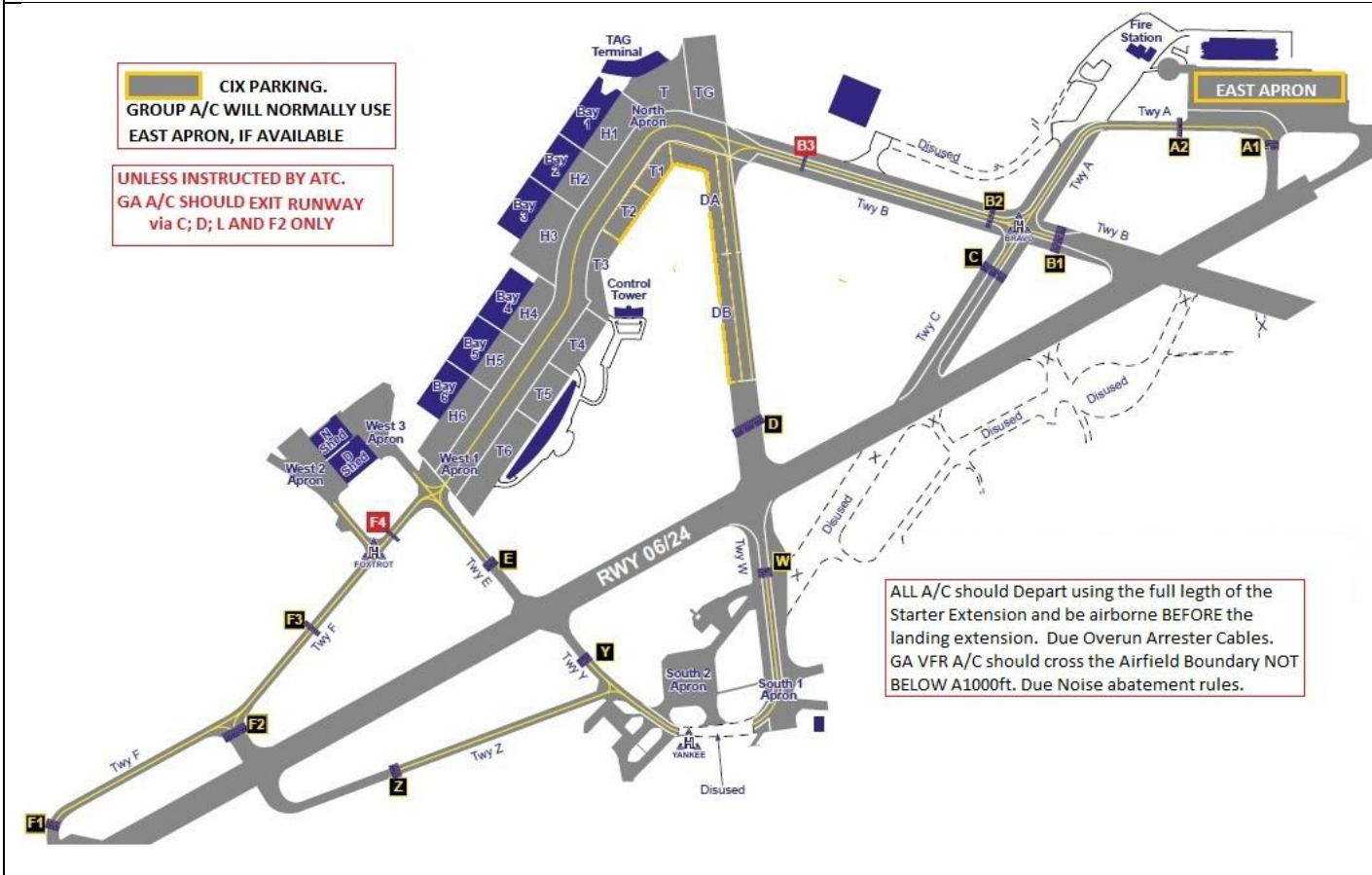
GA VFR Aircraft should be AIRBORNE As soon as practical - Use the opposite Starter Extension, due arrester cables.  
Noise abatement. Cross the A/F boundary NOT BELOW A800ft.

LANDING GA VFR Aircraft should avoid the starterextension AT BOTH ENDS of the runway, vacating NOT BEYOND C or F1

MAY BE AVAILABLE AS Taxi YS.  
ATC will advise if servicable,  
at own risk or NOT available.  
(not a preferred route for GA VFR A/C)

**CIX PARKING.**  
GROUP A/C WILL NORMALLY USE  
EAST APRON, IF AVAILABLE

UNLESS INSTRUCTED BY ATC.  
GA A/C SHOULD EXIT RUNWAY  
via C; D; L AND F2 ONLY



ALL A/C should Depart using the full length of the Starter Extension and be airborne BEFORE the landing extension. Due Overrun Arrester Cables.  
GA VFR A/C should cross the Airfield Boundary NOT BELOW A1000ft. Due Noise abatement rules.



	VRPS	HELICOPTERS	CHART CO-ORDINATES		PlanG CO-ORDINATES	
A	M3 JUNCTION 3		N051.21.21.000	W000.40.51.000	51.3558333	- 6808333
B	M3 JUNCTION 4		N051.18.59.000	W 000.45.25.000	51.3163888	-7569444
C	HOOK		N051.16.46.000	W 000.57.43.000	51.2794444	-9619444
D	TONGHAM/ <del>THE JUNCTION</del>		N051.13.42.000	W 000.44.32.000	51.2283333	-7422222
E	FRENSHAM GRT. POND		N051.09.16.000	W 000.47.30.000	51.1544444	-7916666
F	BAGSHOT		N051.20.57.000	W 000.41.57.000	51.3491666	-6991666
G	FLEET POND		N051.17.19.000	W 000.49.29.000	51.2886111	-8247222
H	GUILDFOED		N051.14.22.000	W 000.35.06.000	51.2394444	-5850000
I	FARNHAM CASTLE		N051.13.07.000	W 000.48.08.000	51.2186111	-8022222
J	ALTON		N051.09.07.000	W 000.57.58.000	51.1519444	-9661111
K	SOUTHWOOD GOLF COURSE		N051.17.13.000	W 000.47.20.000	51.2841666	-7888888
L	SURPRISE HILL		N051.15.23.000	W 000.42.52.000	51.2563888	-7144444
M	QUEENS PARADE		N051.15.47.000	W 000.45.42.000	51.2630555	-7616666
N	M3 JUNCTION 4A		N051.18.12.000	W 000.48.01.000	51.3033333	-8002777
O	LONGEREND FARM		N051.15.41.000	W 000.40.49.000	51.2613888	-6802777
P	TWO BRIDGES		N051.15.23.000	W 000.43.19.000	51.2563888	-7219444
Q	WORPLESDON STATION		N051.17.16.000	W 000.34.57.000	51.2877777	-5825000
R	QUEENS ROUNDABOUT		N051.16.24.000	W 000.45.26.000	51.2733333	-7572222

