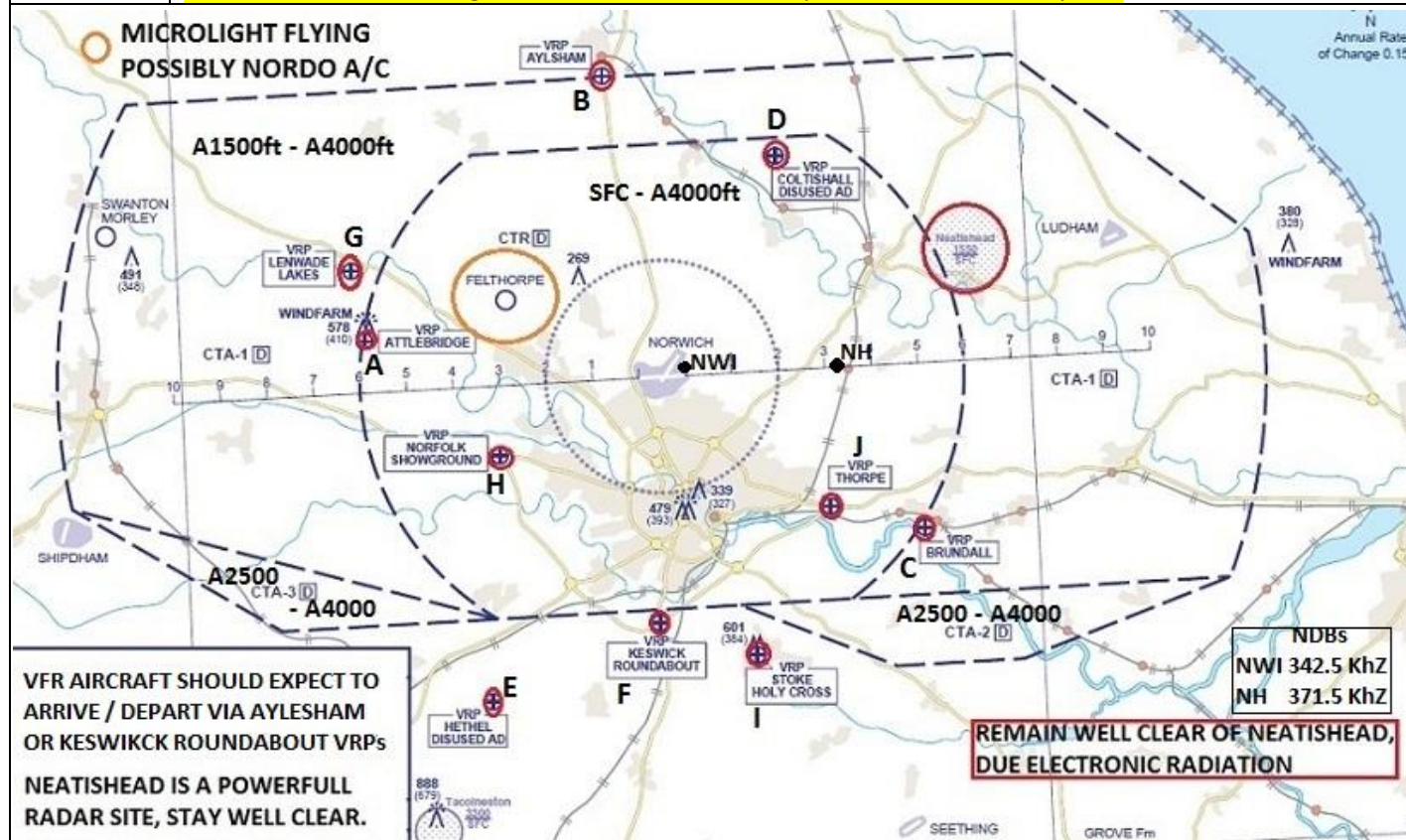


AIRFIELD NAME		September 24		NORWICH		EGSH		North	
CALLSIGN (A/C RADIO)		Norwich Tower					124.255		
CALLSIGN (ES/VATSIM)		EGSH_TWR					Elev. 117ft		
LOCATION		Lat N052.40.33.000		Long E001.16.58.000		Conspicuity			
LOCATION GEOGRAPHIC		2.8nm N of Norwich City					Radar119.355 .		
CHART SOURCE		NATS	ALL A/C. ON DEPARTURE, climb straight ahead to 1000ft QFE [1050FT QNH] BEFORE TURNING, UNLESS INSTRUCTED OTHERWISE BY ATC.				Dir. 128.330		
METAR AIRPORT	EGSH 128.630	QFE= QNH-4 HPscIs							
NAV AIDS	NDB; NWI 342.50kHz	ILS runway 27 110.900							
RUNWAYS	Headings	Dimension	Surface	DO NOT CROSS the CITY of NORWICH BELOW A2000ft IF BACKTRACKING, USE THE 'ALERT' PANS TO TURN ROUND.					
	09 / 27	1841m x 45m	Asphalt						
AIRSPACE	CLASS	Transition level 3000ft	Airspace above Class C Lon.IFR 19500 Alt		GA A/C MUST REMAIN VMC WITHIN THE CTA/CTR, AND FOLLOW ATC INSTRUCTIONS.				
CIRCUITS	1000FT QFE		Variable, as instructed by ATC. Normally-NORTH. NO OH Joins						
LOCAL HAZARDS	BIRDS- Overflights, dawn/dusk, Rooks. Gulls anytime. GA & Microlight A/C, Felthorpe, 4nm NW. Helicopter winch training takes place north of the runway, at anytime								
REMARKS	Stand 22(14) (West Apron) Air Ambulance only Light A/C Grass parking, West apron can be accessed from taxi D or E. Caution Helipad. The A/P services offshore rigs and also provides extensive IFR and helicopter training.								
HELICOPTER OPERATIONS	Light helicopters, not always required to use runway, AVOID overflying local residential areas, request intended routing and follow ATC instruction. DEPARTURES DIRECT FROM STANDS/HELIPADS STRICLY FORBIDDEN. LIGHT Helicopters may be permitted to use designated HOLDS, by ATC. - MAIN APRON, Air taxiing forbidden, Wheeled helicopters ONLY on main apron.								



VRPs: If A/F busy expect to enter / depart CTA via Keswick, Stoke or Aylesham.

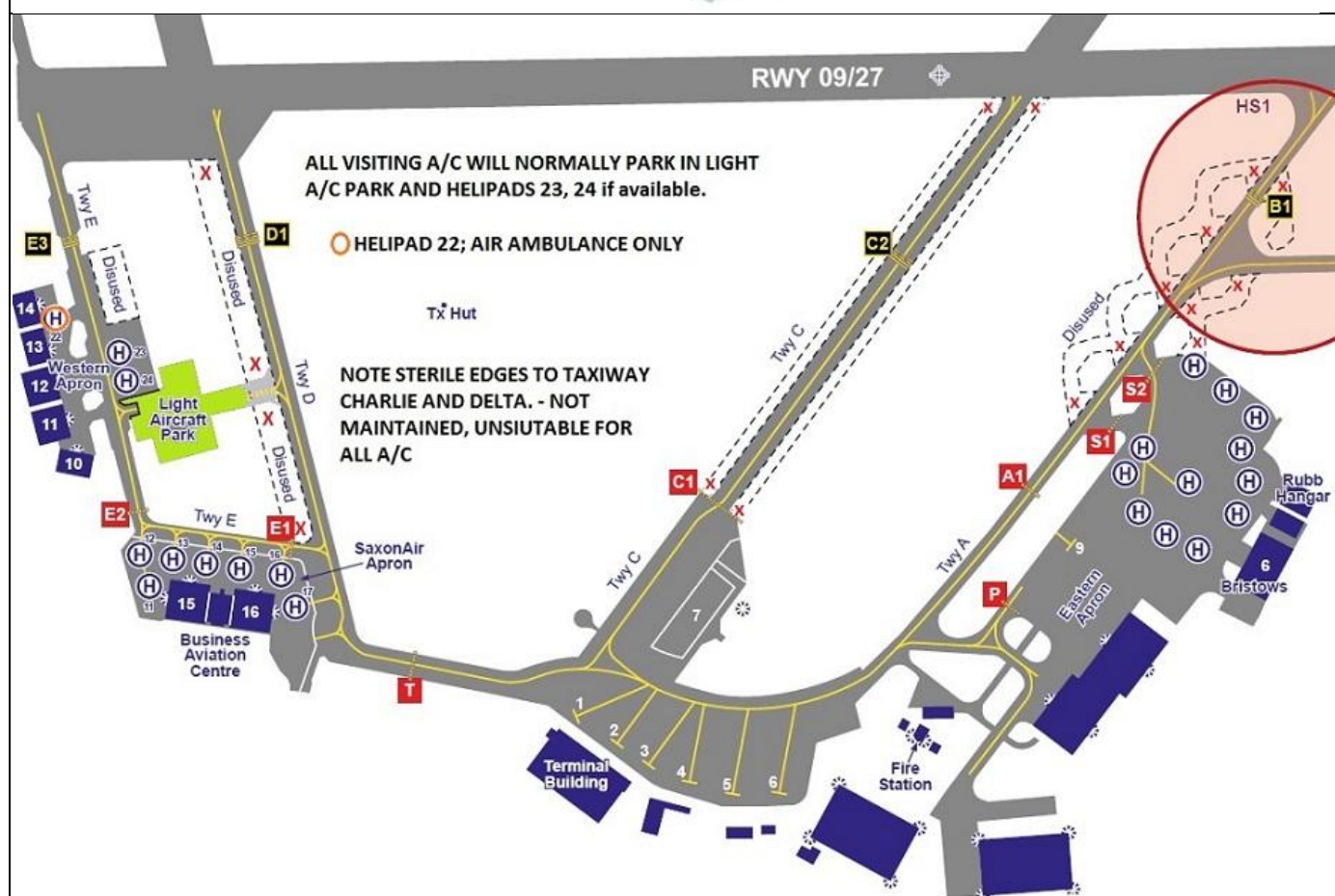
- |                  |                         |                       |
|------------------|-------------------------|-----------------------|
| A. Attlebridge   | B. Aylesham             | C. Brundall           |
| D. Coltishall    | E. Hethal A/F           | F. Keswick Roundabout |
| G. Lenwade Lakes | H. Northfolk Showground | I. Stoke Holy Cross   |
| J. Thorpe        |                         |                       |

ALL VFR A/C should navigate to avoid local villages.

ON DEPARTURE ALL A/C SHOULD  
CLIMB-OUT AS STEEPLY AS PRACTICAL  
WITH MINIMUM NOISE.  
NORMALLY; VFR, NO OHJs,

ALL VFR A/C, WHEN LANDING  
DO NOT DROP BELOW THE  
GLIDE-PATH - VASIs

**H** AIR AMBULANCE OPERATIONS  
TAKE PRECEDENCE OVER ALL  
OTHER A/C MOVEMENTS.



**ALL PILOTS: PLEASE PUT YOUR A/C CALLSIGN AFTER YOUR NAME.**

**NOT TO BE USED FOR REAL WORLD OPERATIONS**