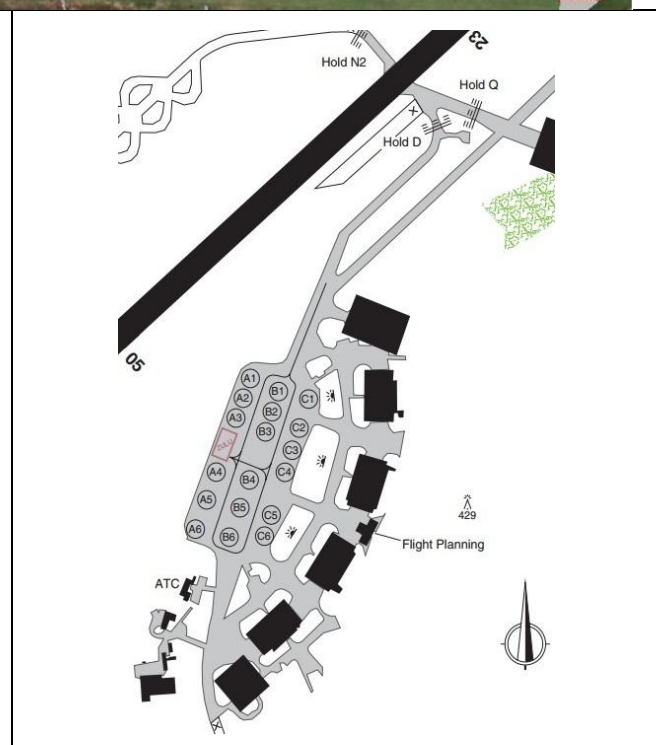
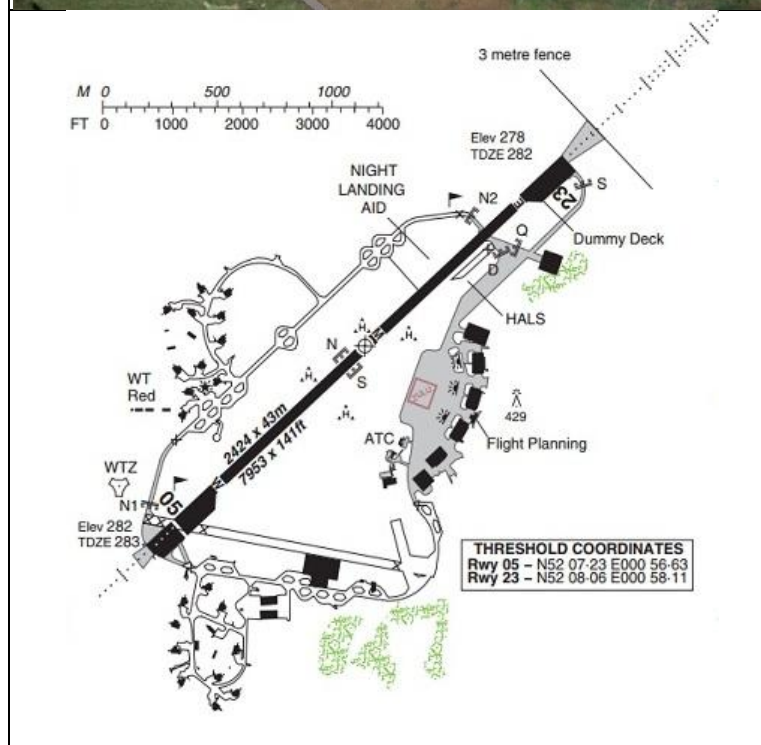
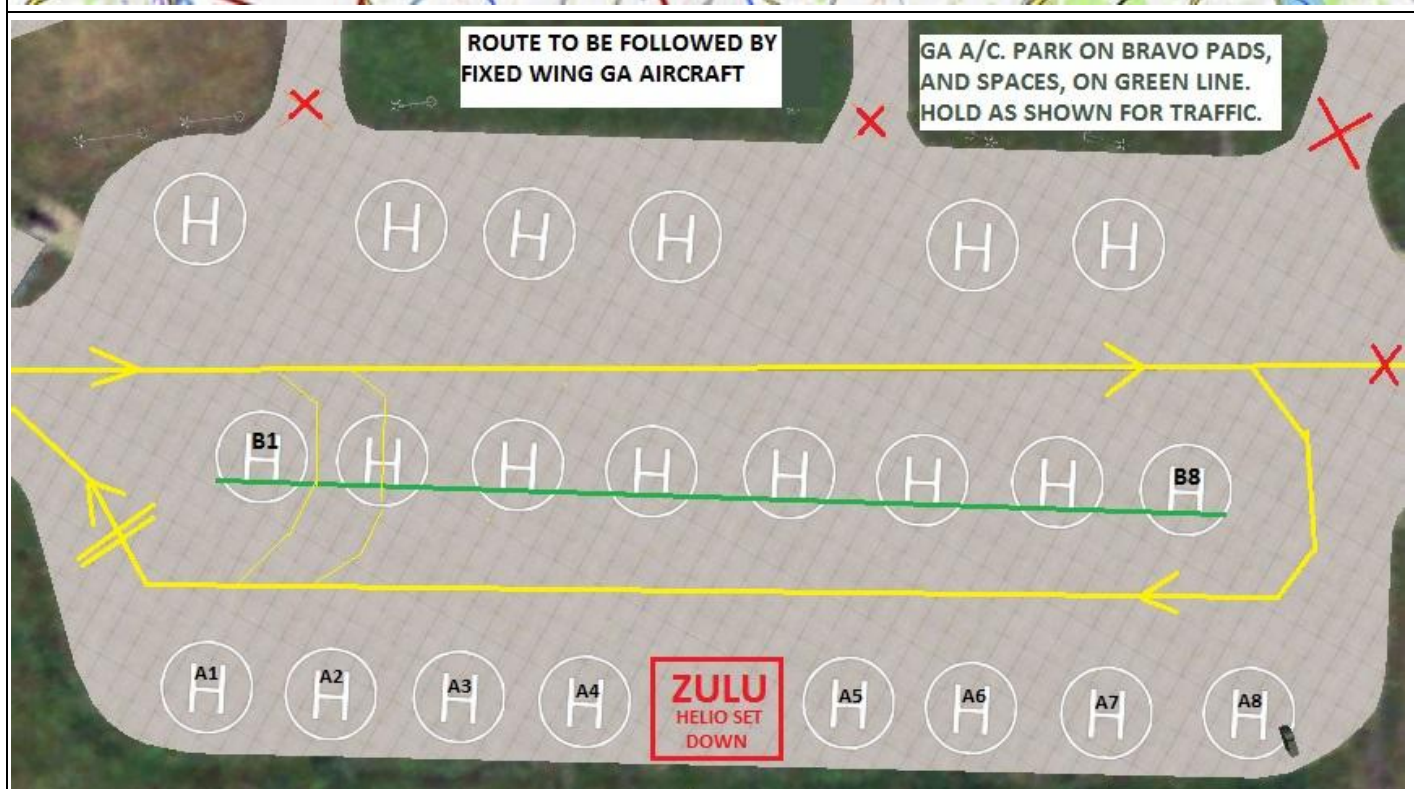
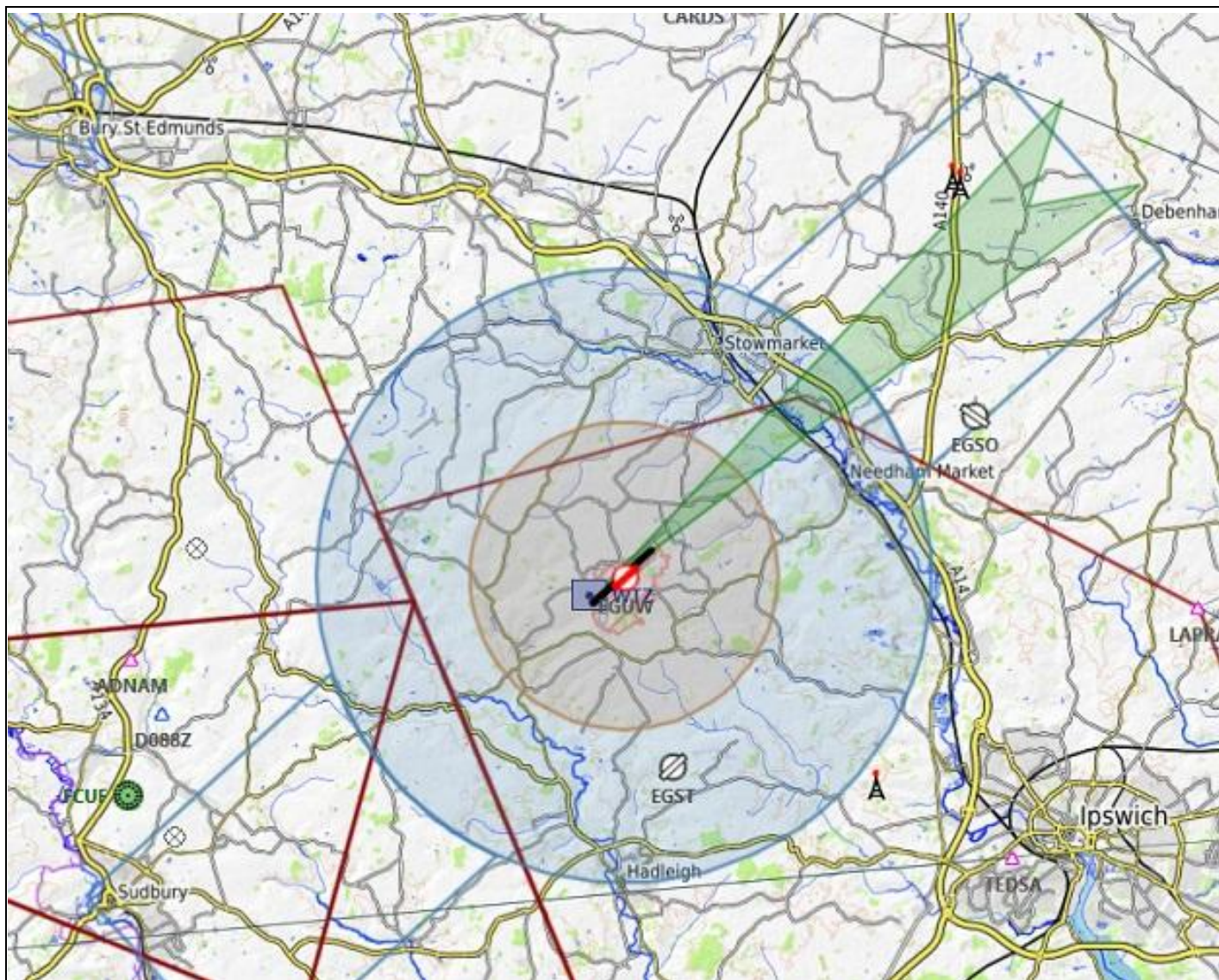


AIRFIELD NAME	December 24		WATTISHAM ARMY			EGUW	Central
CALLSIGN	Wattisham Tower					118.210	Elev. 283ft
CALLSIGN	EGUW_TWR					App.125.805	
LOCATION	N052.07.62.000			E000.57.32.000		Talkdown 123.300	
LOCATION GEO.	8nm N by NW of Ipswich					QFE=QNH-9HPscls	
CHART SOURCE	Various		This is the main base for Army helicopter operations. Most of the Airfield is now disused. Fixed wing A/C will require backtrack to/from 23 threshold / taxiway. Fixed wing A/C should park on Helipads C1 - C8 as shown below.				
METAR AIRPORT	EGWU 121.125						
NAV AIDS	ILS R23 111.100						
RUNWAY	05 / 23	2424M x 43M	Ashphalt	If multiple runway taxiing is needed, use the LEFT side of the Runway. Hold on the 05 ready apron if required.			
AIRSPACE	Class D	MATZ Class D Sfce > A3000					
CIRCUITS	Fixed wing to the South East; 05 LH; 23 RH. @1000ft QFE.						
NO FLY	Local villages below A1000'. Ipswich below A2000'. Caution operations at Elmsett to the South.						
HAZARDS	Birds, all types; Low flying Military A/C, all types.						
HELICOPTER OPERATIONS	Use Fixed wing circuits or as advised. Circuit height 700ft QFE. Hover-taxi (skids) via taxiways unless advised. Park on A and B helipads.						
SPECIAL RULES	Make Fixed wing circuit wide (1.5-2nm) Military fixed wing may visit. ALL military A/C have precedent, unless you are given priority by ATC. If no ATC, announce on UNICOM.						







**PILOTS:** PLEASE PUT YOUR A/C CALLSIGN AFTER YOUR NAME. **NOT TO BE USED FOR REAL WORLD OPERATIONS**