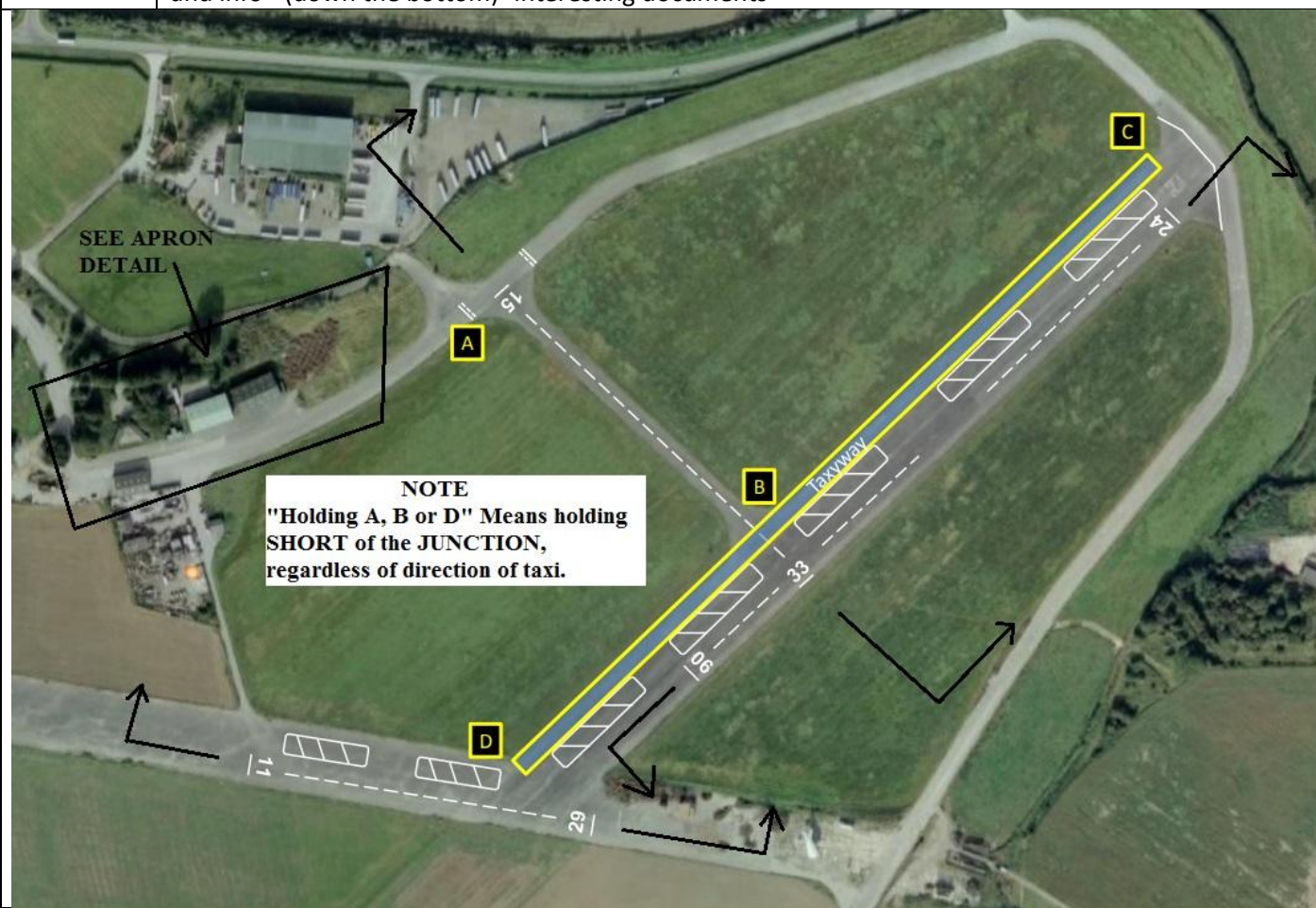
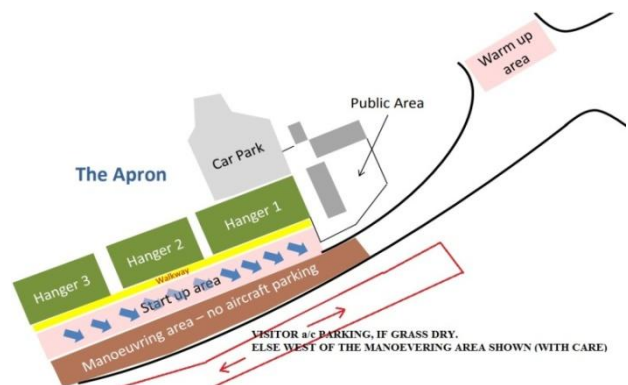
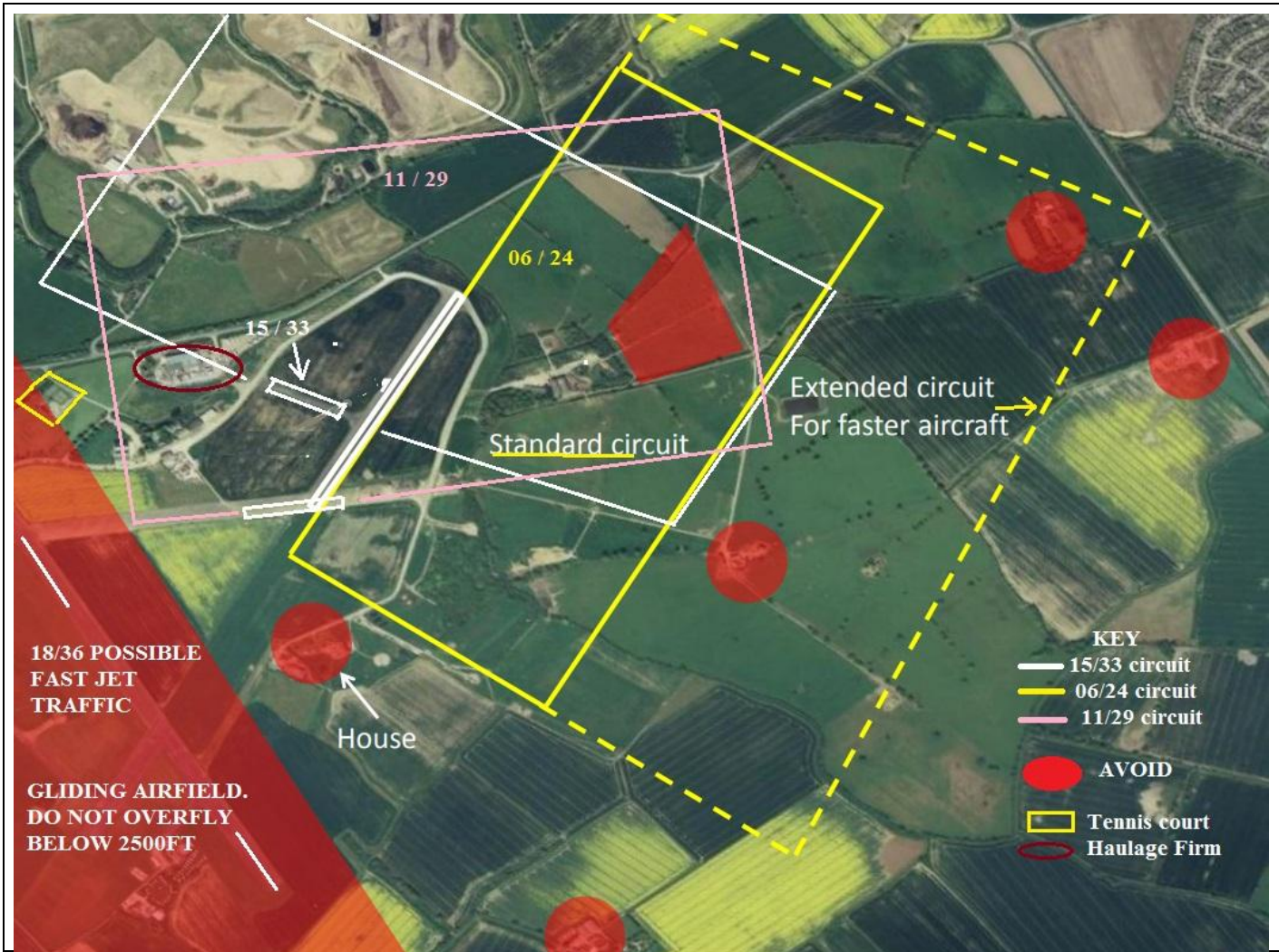


SEPARATE GLIDER AND FIXED WING A/Fs. NOT SUPPORTED

AIRFIELD NAME	September 25		Rufforth EAST (& West)		UK11	N
SPECIAL NOTE: The Old Rufforth AB is now 2 separate A/Fs . GA NOT permitted at Rufforth EAST EAST ; Light sports GA, Microlights and Gyroplanes. THE CIRCUIT IS VERY RESTRICTED. West ; The Yorkshire Gliding Club. ALSO Runway 17/35 may be used by Large A/C, including Fast Jets.						
CALLSIGN (A/C)		RUFFORTH TRAFFIC				122.800 Unicom
CALLSIGN (VATSIM)		Not normally manned - AGO (Xept TS3)				Ground. -----
LOCATION		Lat N053.57.360	Long W001.10.33.170		Elev. 64 ft	
LOCATION GEO		3nm S by W of YORK; 17nm WSW of EGNM				VFR Conspicuity ---
CHART SOURCE		UK11 A/F owners. My thanks to John Teesdale CFI				App.
METAR AIRPORT		EGNM 118.020		QFE= QNH-2 HPscIs		
NAV AIDS (FSX/PG3)						
RUNWAY	Headings	Dimension		Surface		
	06 / 24	582m x 22m HALF OLD RNY		Asphalt-East end of old 06/24		
	15 / 33	378m x 18m APROX				
	11 / 29	342m x 18m APROX				
AIRSPACE	CLASS G	Transition level 3000ft		Airspace above Class C FL195		
NO FLY	YORK; local houses etc. (as shown below); RUFFORTH WEST. BELOW 2500ft QNH.					
LOCAL HAZARDS	Vehicles may use extended (w) 11/29; and the NE peri track. Gliders may stray into the A/F due weather; Large A/C, including Jets may use 18/36 at any time, unannounced. NORDO A/C may operate in the area.					
HELICOPTER OPERATIONS	UNLICENSED. Operate as GA. Park WELL CLEAR of the club apron and run-up area.					
REMARKS	Read this datasheet and the A/F operations booklet in CIX forum\pilot training and info.\RT training and info - (down the bottom)- interesting documents					





Rufforth EAST apron area.

← Rufforth WEST A/F

Link to Documents provided by RUFFORTH A/F, E & W.

Rufforth East UK11 Flying Orders

https://www.dropbox.com/s/6gfut3s8tn3rgzm/flying_orders.pdf?dl=0

Rufforth West York gliding club handbook

<https://www.dropbox.com/s/ybjok37emp4kpi3/NewMemberHandbook.pdf?dl=0>

PILOTS: PLEASE PUT YOUR A/C CALLSIGN AFTER YOUR NAME. NOT TO BE USED FOR REAL WORLD OPERATIONS