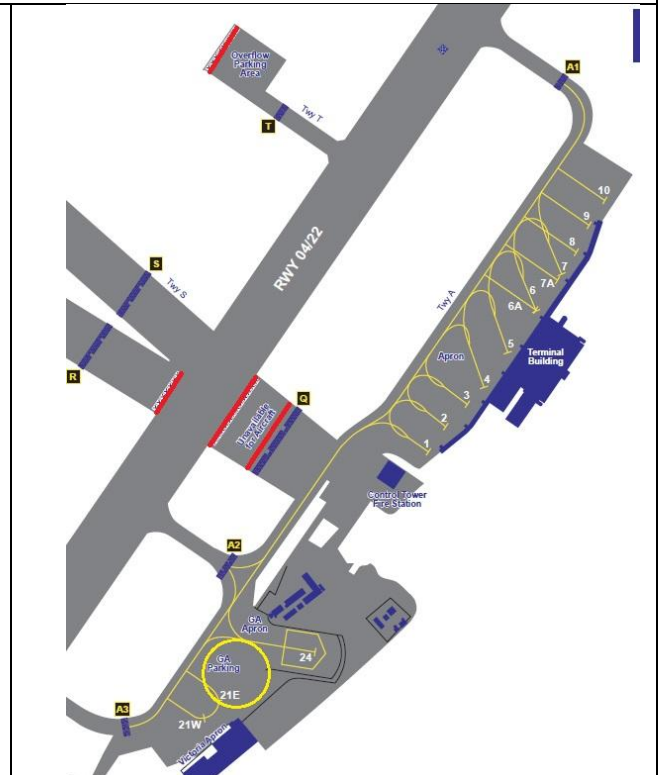
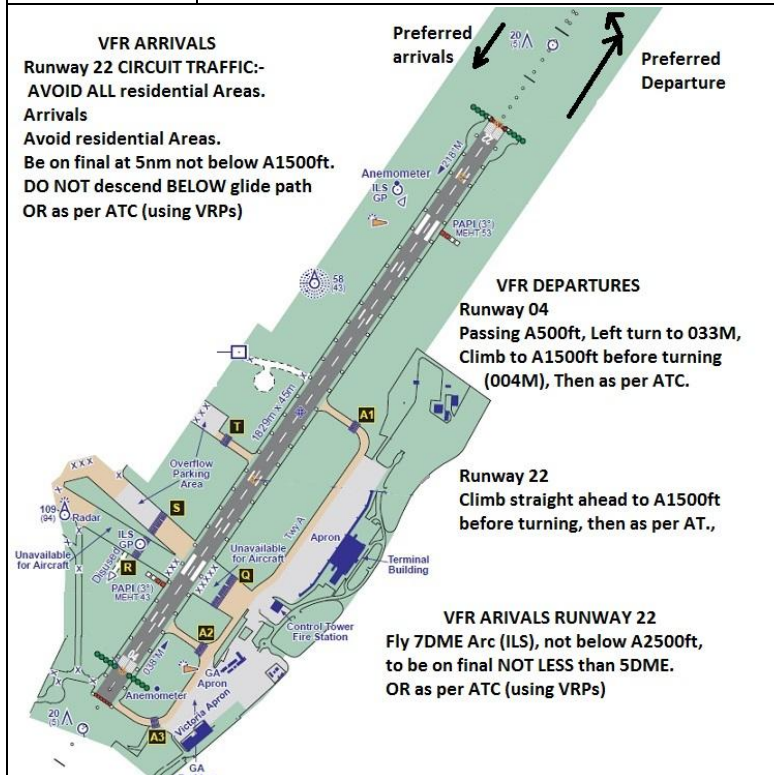
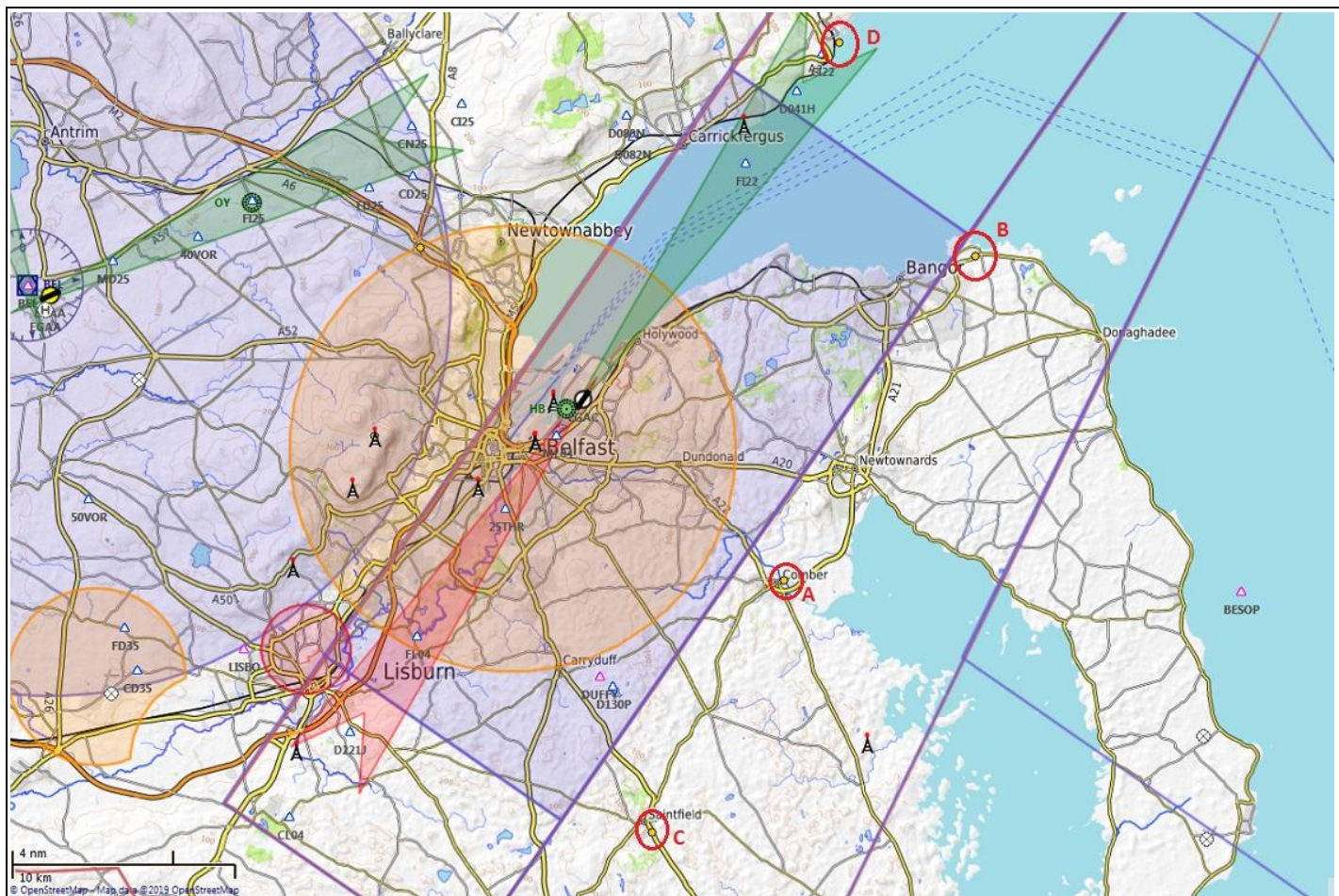


AIRFIELD NAME AND ICAO		October 19	<b>BELFAST CITY</b>		<b>EGAC</b>	Ireland
CALLSIGN (A/C RADIO)		Belfast Tower			122.820	
CALLSIGN (ES/VATSIM)		EGAC_TWR			APP. 130.850	
LOCATION		Lat N054.37.05.000	Long W005.52.21.000		Elev. 15ft	
LOCATION GEOGRAPHIC		East side of BELFAST DOCKS			VFR Conspicuity	
CHART SOURCE/VOR		NATS	Listening Frequency. 130.850; Squawk 4255		Belfast Radar 134.800	
METAR AIRPORT		EGAC 136.620			QFE= QNH	
NAV AIDS (FSX / PLANG3)		NDB; HB 420.0kHz		ILS: I-BFH 108.10mHz	DME/	
RUNWAYS	Headings	Dimension	Surface	Noise Abatement and Notes		
	04 / 22	1829m x 45m	Asphalt	Grooved;		
AIRSPACE	CLASS D CTR	Transition level 6000ft		Airspace above is:- Class E Belfast TMA1/2. A2000ft +		
CIRCUITS HEIGHT / DIR.		A1500ft	VFR circuits to the WEST (over the water)04 LH. 22 RH or as instructed			
NO FLY AREA	ALL A/C observe rules for establishing the centre-line and heights on approach and departure.					
LOCAL HAZARDS	There are <b>numerous OBSTACLES</b> around and on the approach of both runways. <b>Establish the centre-line as advised</b> (see below) and <b>DO NOT go below (3<sup>0</sup>) Glide Path</b> on final approach. Being located in a Lough, with a BIRD SANCUARY close to 22 approach, <b>BIRDS ARE A CONSTANT HAZARD</b> , especially Greylag Geese, up to 100ft under 04 approach. CAUTION restricted / unavailable taxiways and aprons (see Chart).					
HELICOPTER OPERATIONS	Helicopter operations (except emergency services) not permitted (RW). VATSIM/IVAO; At the discretion of the Tower Controller. Pilots to comply with ALL instructions, particularly ground movement.					
SPECIAL RULES	LVP is RVR 800M or less or Cloud Base 200ft or less. i.e. no VFR departures.					
	ARRIVING VFR Runway 22. Establish 7DME Arc. NOT Below 2500ft to establish C/L not less than 5DME. Runway 04. Establish C/L by 5 DME, NOT below 1500ft DEPARTING VFR Runway 22. Climb straight ahead to 1500ft before turning, then as instructed by ATC. Runway 04. Passing 500ft QNH, LEFT turn, track 0330M, climb to altitude 1500ft QNH before turning, then as instructed by ATC.					
REMARKS	<b>Preferred RUNWAY OPS: ARR: 22; DEP 04. Various parts of the aerodrome are private, other areas are unsuitable for A/C. It is recommended that the A/D chart is used for reference.</b>					
VRPs	<b>A</b> Comber, N054.33.03 W005.44.45; <b>B</b> Groomsport, N054.40.30 W005.37.05 <b>C</b> Saintfield, N054.27.37 W005.49.58; <b>D</b> Whitehead, N054.45.10 W005.42.34					





**VRPs :** These coordinates are for use in PlanG

**A :** Comber, N054.5508333 W005.7458333;

**C :** Saintfield, N054.4602777 W005.8327777;

**B :** Groomsport, N054.675000 W005.618055

**D :** Whitehead, N054.7527777 W005.7094444

**ALL PILOTS: PLEASE PUT YOUR CALLSIGN IN TS3** **NOT TO BE USED FOR REAL WORLD OPERATIONS**