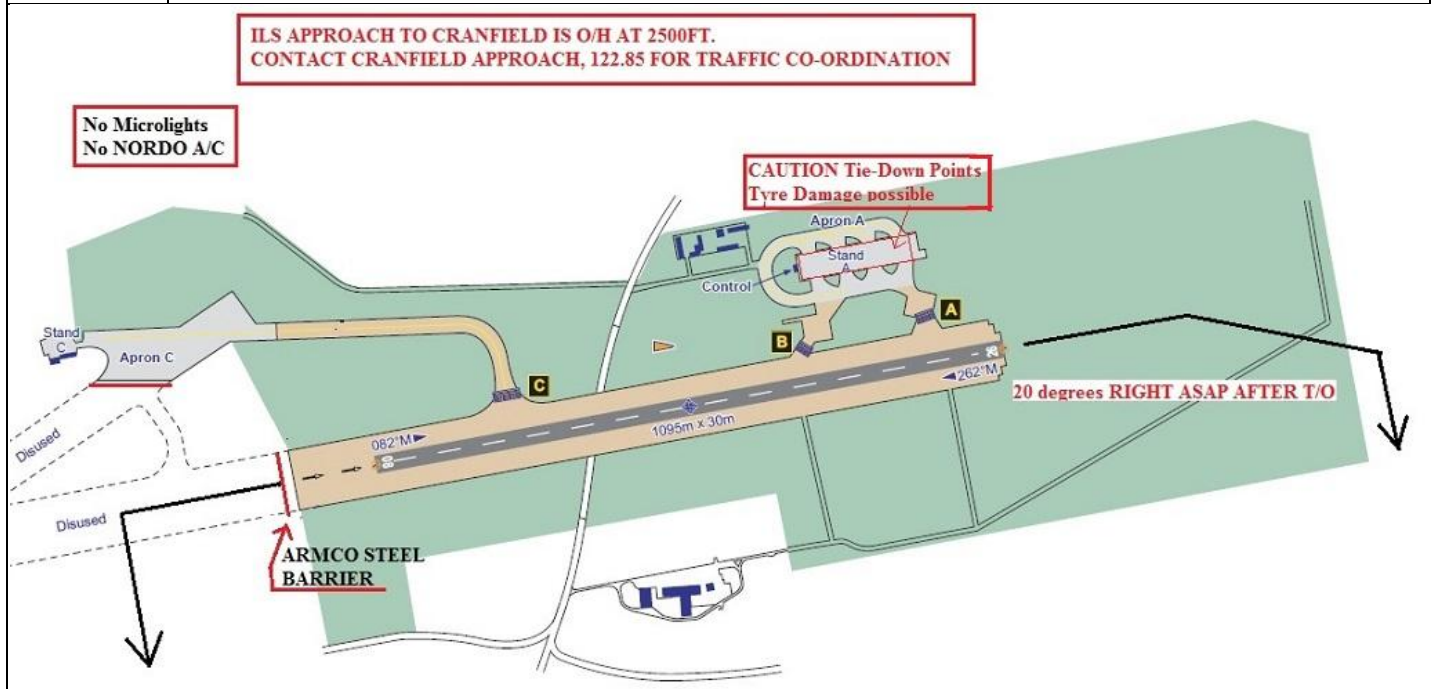


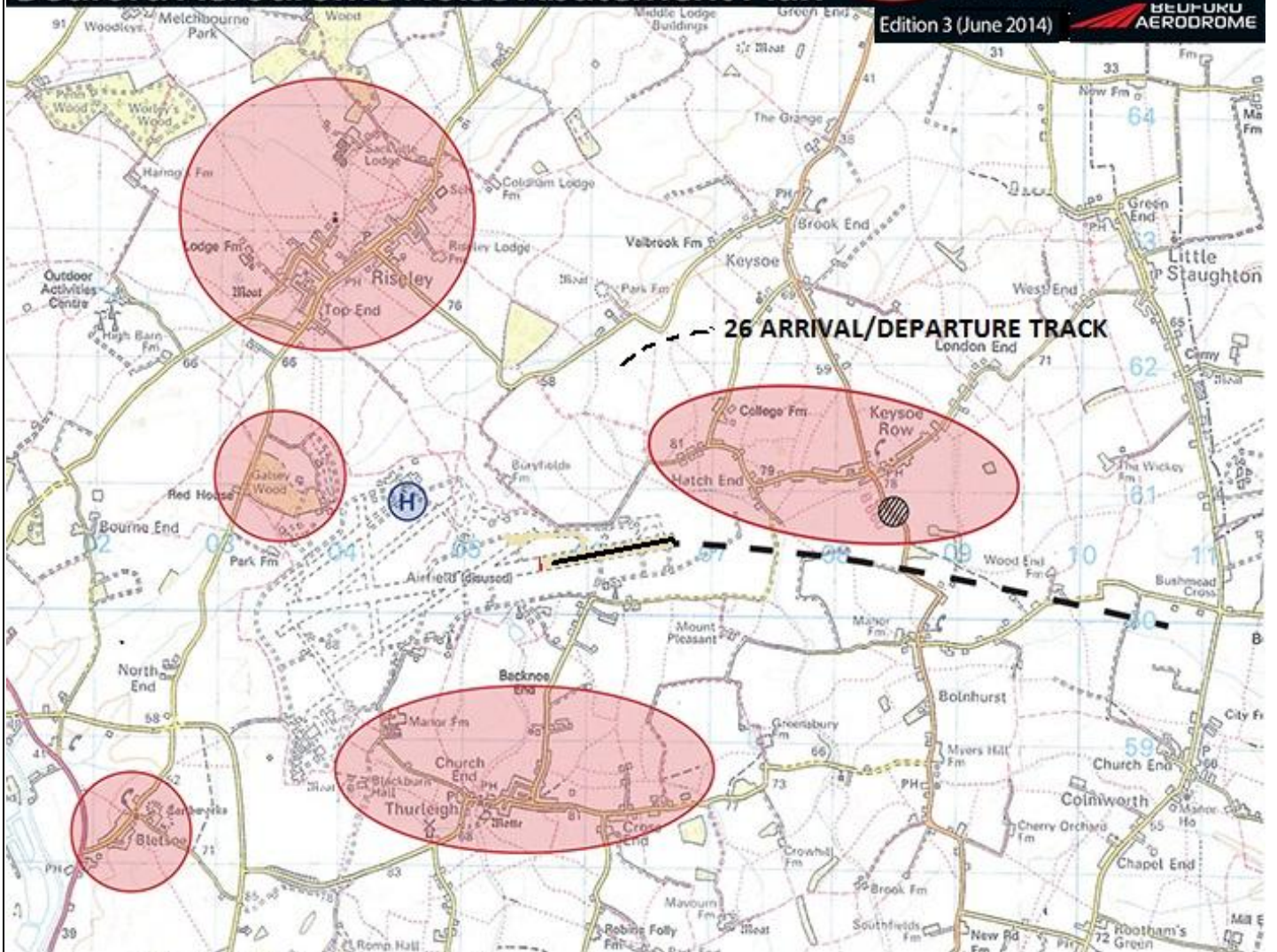
AIRFIELD NAME AND ICAO	October 19	BEDFORD		EGBF	Central
CALLSIGN (A/C RADIO)	BEDFORD RADIO			119.020	
CALLSIGN (ES/VATSIM)	EGBF_R_TWR			Elev. 273ft	
LOCATION	Lat N052.13.57	Long W000.26.44		QFE= QNH -9	
LOCATION GEOGRAPHIC	5nm N of Bedford			EGTC_APP 122.850	
CHART SOURCE	NATS/Jonathan Palmer, Bedford Aerodrome and Motor Sport Vision Ltd. Use of Airfield Publications by kind permission of J. Palmer.				
METAR AIRPORT	EGTC Cranfield 121.870	PLANG AD Coordinates: N052.2325000 W-000.4455555			
NAV AIDS (FSX / PLANG3)	NDB CT 363.5Khz - No longer RW		DME/ ILS 109.750- No longer RW		
RUNWAYS	Headings	Dimension	Surface	Noise Abatement and Notes	
	08 / 26	1095M x 30M	Concrete	Arrivals runway 08 arrival. Departures runway 26.	
AIRSPACE	CLASS	Transition level 6000ft		Airspace above is:- Class C. FL195 ; see below; Cranfield	
CIRCUITS HEIGHT / DIR.	1000ft QFE	ALL CIRCUITS TO THE SOUTH. 08 RH; 26 LH.			
NO FLY AREA	SEE CHARTS BELOW. AVOIDANCE OF INDICATED AREAS IS MANDATORY. ALL AC ; USE STEEP APPROACHES/DEPARTURES WHERE POSSIBLE				
LOCAL HAZARDS	NO RUNWAY/TAXIWAY/APRON LIGHTING. ARMCO BARRIERS PROTECT THE VEHICLE PARKING AREAS OF THE OLD BAE AD. - SEE CHARTS BELOW. INSTRUMENT APPROACH TO EGTC CRANFIELD PASSES OVERHEAD AT A2500ft. STAND A HAS 'TIE-DOWN' POINTS WHICH COULD DAMAGE AC TYRES . Use taxiways				
HELICOPTER OPERATIONS	NOT APPLICABLE. Helipad available NW of AD, as shown.				
SPECIAL RULES	ALL TYPES OF FLYING TRAINING/PRACTICE IS PROHIBITED. NO NORDO A/C or MICROLIGHTS THIS DOCUMENT IS ESSENTIAL READING, BEFORE FLYING INTO/OUT OF BEDFORD AD. VISITING AC SHOULD CONTACT CRANFIELD APPROACH 122.850 FOR COORDINATION. ALL ARRIVALS should contact Cranfield Approach on 122.850 not less than 10dme ALL ARRIVALS to call Bedford Radio NOT LESS than 5dme. Preferred parking is Apron A. Preferred runway use: Arrivals 08; Departures 26. The noise abatement routes are MANDATORY . When departing runway 26 , climb STRAIGHT AHEAD to A1000ft before turning on course. Remain well clear of Cranfield Airspace.				
REMARKS	For the inexperienced pilot, Bedford could be very challenging, SHORT runway; Difficult approach; possible traffic at A2500ft; AG(R)O A/F; NO radio Nav aids (RW). Please read this carefully, first.				



Bedford Aerodrome Noise Abatement Plan

Avoid shaded areas

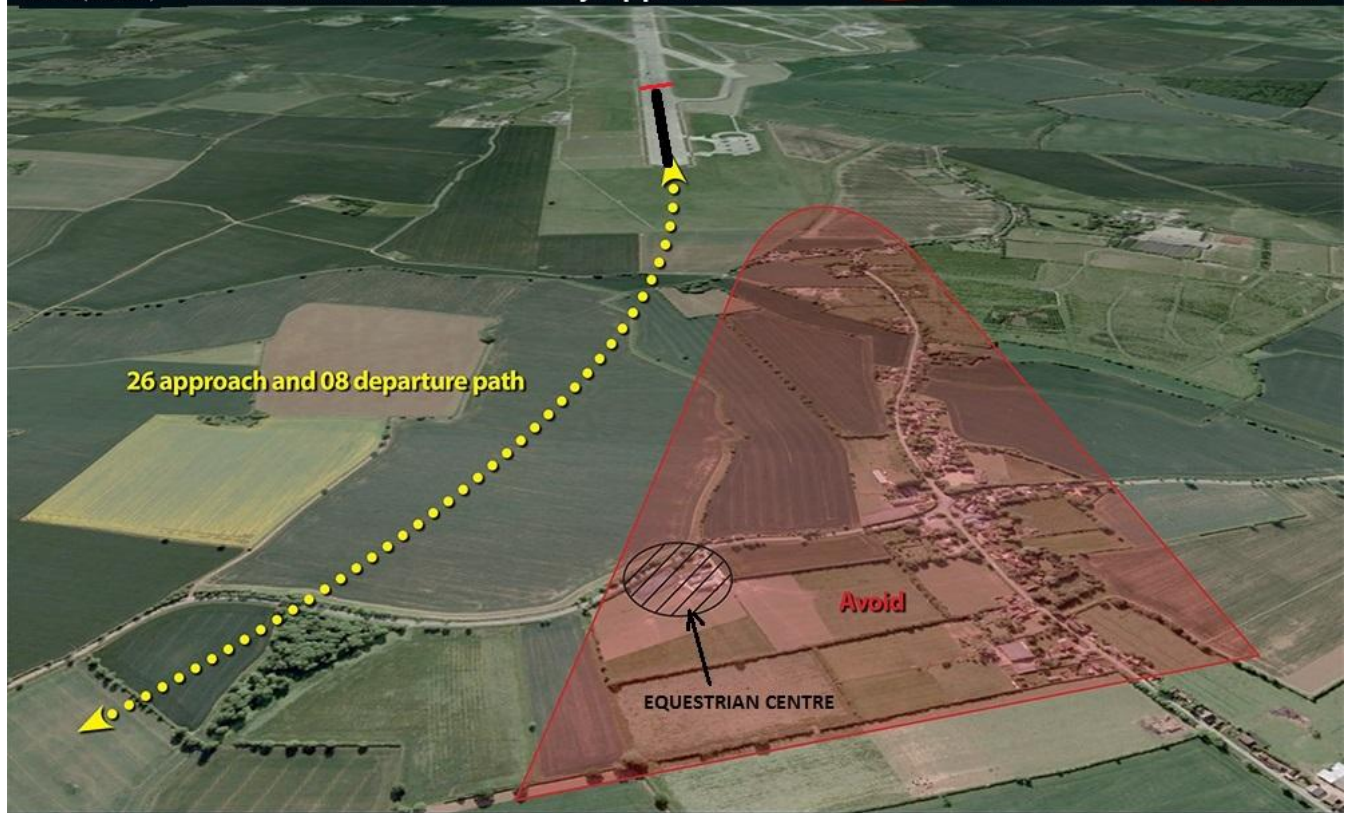
Edition 3 (June 2014)

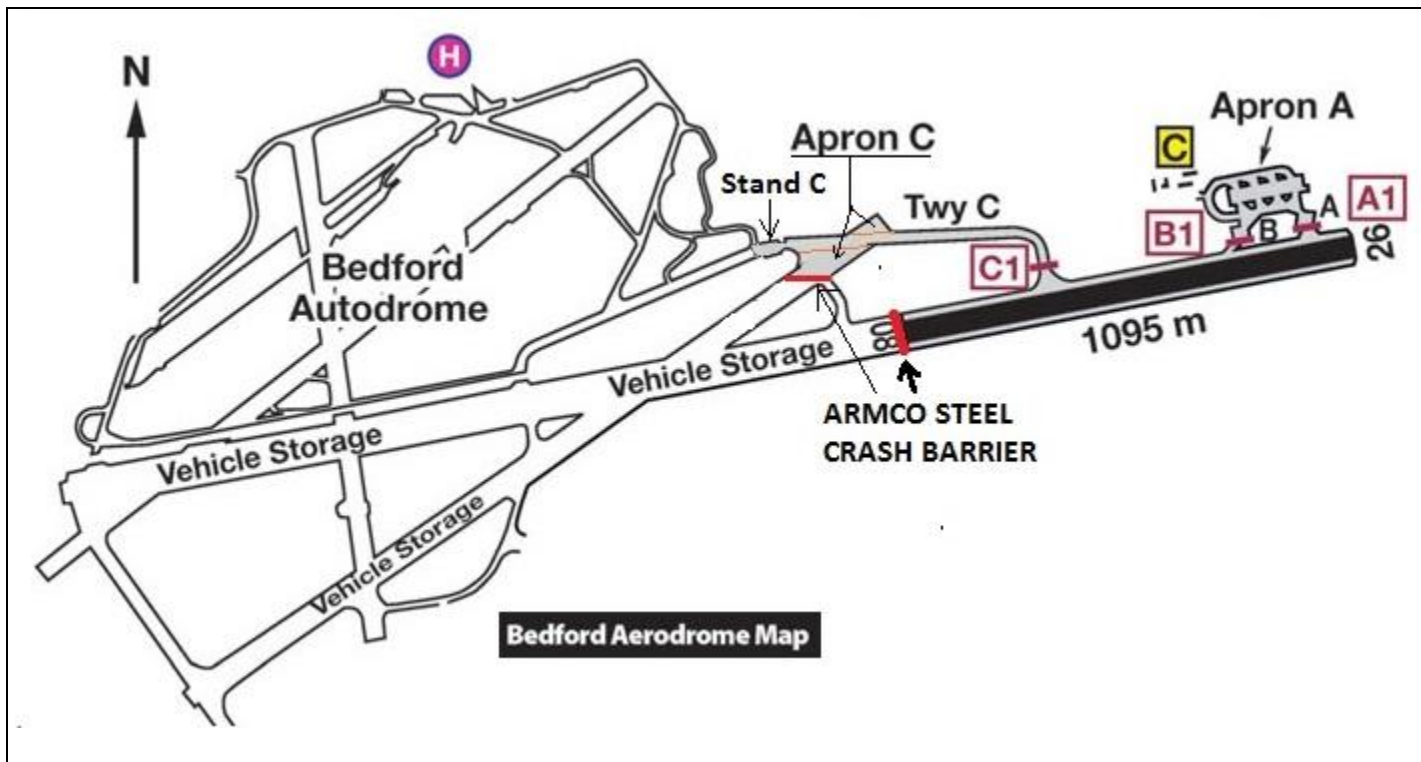


Edition 2 (June 2014)

Bedford Aerodrome Runway Approach

Avoid shaded area





ALL PILOTS: This is a challenging airfield.
REMEMBER. The AGO CAN ONLY pass traffic information RECEIVED from PILOTS.
 If you do not report what you are doing, the AGO cannot advise other A/C.
 So, keep him informed of your actions/intentions. Enjoy.

ALL PILOTS: PLEASE PUT YOUR A/C CALLSIGN AFTER YOUR NAME. NOT TO BE USED FOR REAL WORLD OPERATIONS