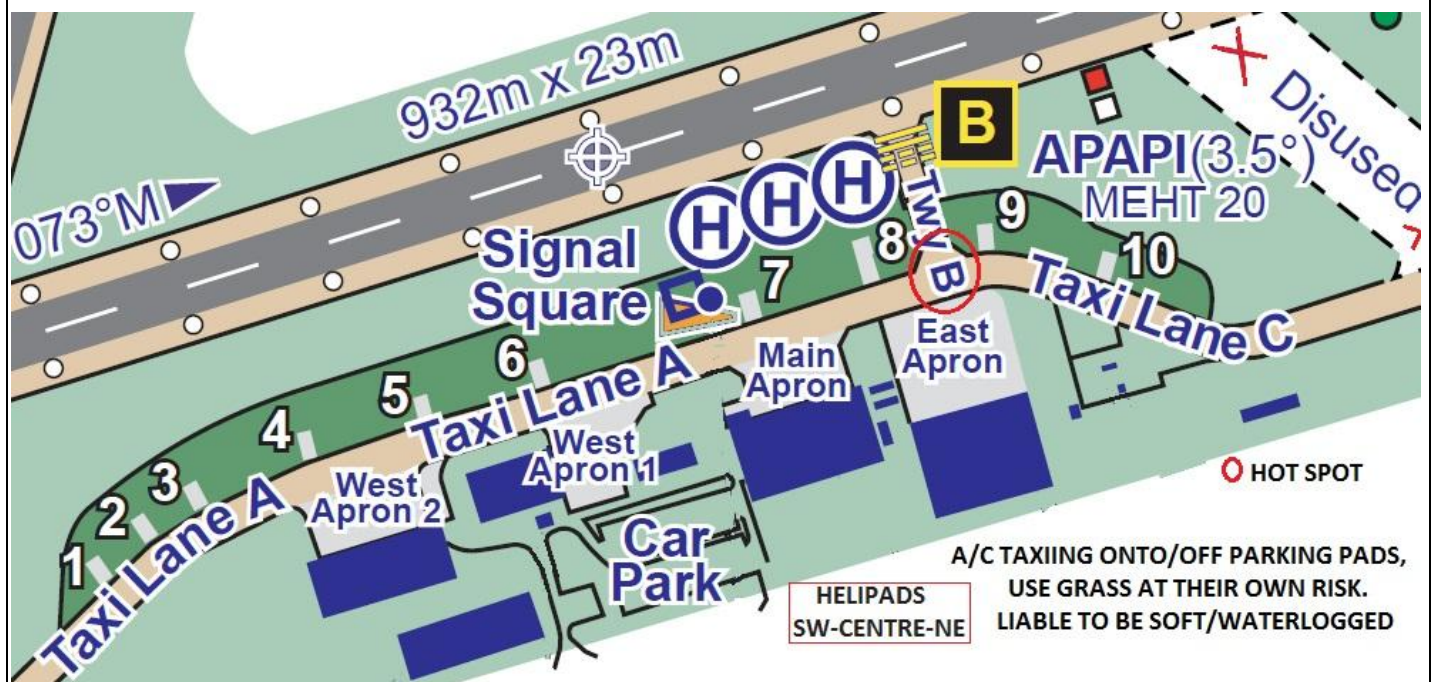
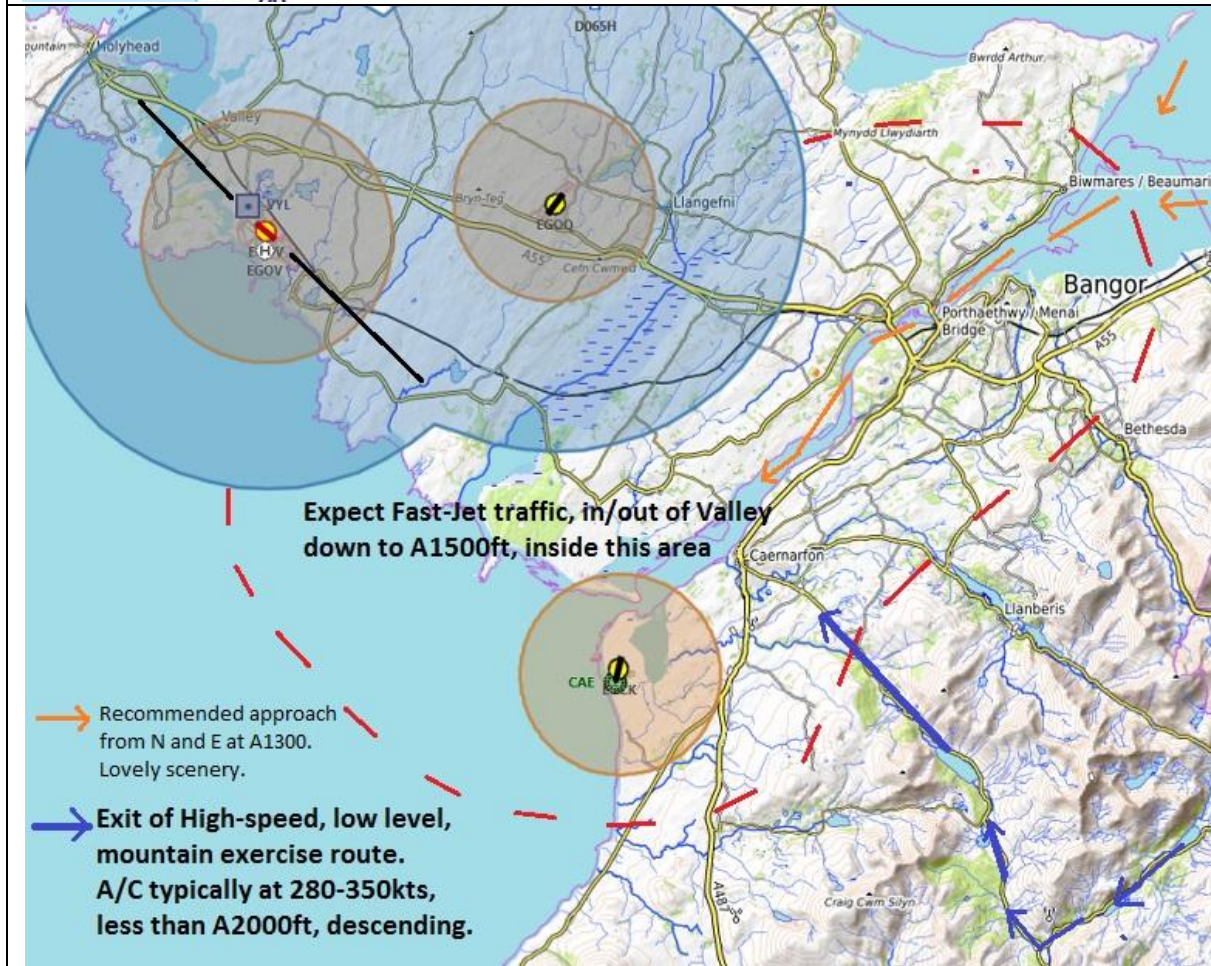
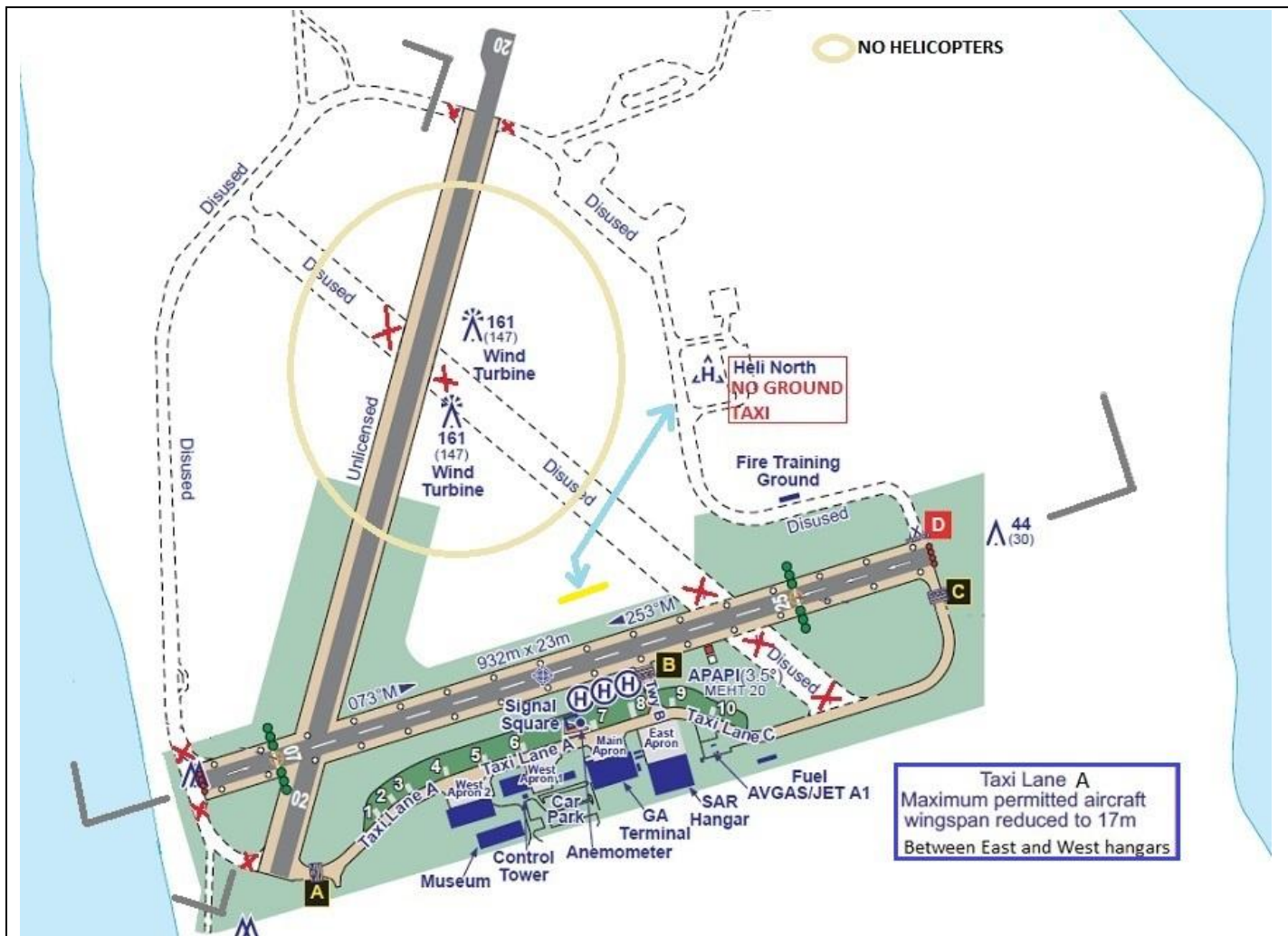


AIRFIELD NAME AND ICAO		October 19	CAERNARFON		EGCK	North
CALLSIGN (A/C RADIO)		Caernarfon Radio			122.250	
CALLSIGN (ES/VATSIM)		EGCK_R_TWR			Ground. ----	
LOCATION		Lat N053.06.07.000	Long W004.20.15.000		Elev. 14ft	
LOCATION GEOGRAPHIC		4nm SW Caernarfon			Conspicuity ----	
CHART SOURCE/VOR		NATS				App. Valley; 125.220
METAR AIRPORT		EGOV 120.720	Remain clear of CMATZ airspace		QFE= QNH	
NAV AIDS (FSX / PLANG3)		NDB. CAE; 320kHz		NO NORDO A/C	DME/	
RUNWAYS	Headings	Dimension	Surface	Noise Abatement and Notes		
	07 / 25	932m x 23m	Asphalt	NO FLIGHT TRAINING PERMITTED		
	02/20	UNLICENSED	[1081x23]	Wind turbines 40m East of c/l		
AIRSPACE	CLASS G	Transition level 3000ft		Airspace above is Class C Base Alt 19500; London FIR		
CIRCUITS HEIGHT / DIR.		A800ft QNH	07 LH. 25 RH	OH JOINS NOT ABOVE A1300ft, Mandatory		
NO FLY AREA	ANY caravan site within the ATZ below 1000ft					
LOCAL HAZARDS	Runway 07 c/l; @11000m+ Mountains at 3550ft+; High Ground to SE @ A3560ft. RSPB reserve 1km South; Increased Bird activity, September - March. During and after heavy rain, Runways liable to standing water.					
HELICOPTER OPERATIONS	NO HELICOPTER MOVEMENT within 300m of wind turbines. Helicopters to approach using active runway and land as advised by ATC (Heli-North or centre of runway - opposite Helipads). Helicopters must NOT overfly any caravan site within the ATZ BELOW 1000ft Helicopters hover-taxiing from Heli-North should report holding short of the runway and await a report of "Runway clear" from AGO, before crossing the runway. Outbound report ready to lift.					
SPECIAL RULES	Access to stands restricted to A/C with wing span LESS THAN 17m. Maintain Taxiway centre-line. Circuit height 800ft ALL A/C join O/H NOT ABOVE 1300ft Expect ALL Grass to be SOFT.					
REMARKS	A/F is near RAF Valley App. NOT above 1500ft, Menai straights area. See chart below. Air Ambulance and SAR Helicopters (SR92) operate H24 and have priority over ALL OTHER TRAFFIC Due National Grid Pylons, LEFT of 25 c/l. Pilots should ensure they are ON THE CENTRE LINE BEFORE DESCENDING with the PAPIs, within 4nm of Threshold. Maintain separation from operating helics. In the air and on the ground, due turbulence/downwash. IF Active, ALL A/C should contact Valley Radar 10minutes away and when climbing away.					





PILOTS:
PLEASE PUT
YOUR A/C
CALLSIGN
AFTER YOUR
NAME.

**NOT TO BE
USED FOR
REAL WORLD
OPERATIONS**