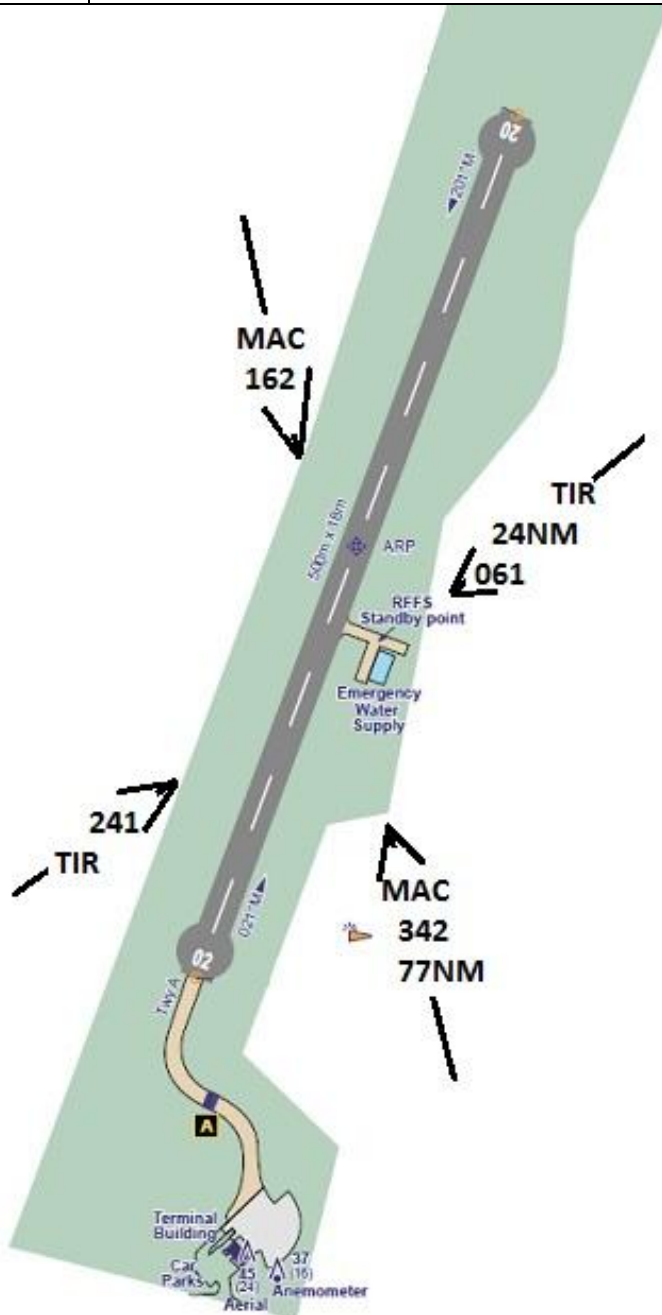


AIRFIELD NAME	March 20	COLL		EGEL	Scotland
CALLSIGN (A/C RADIO)	Coll Radio			125.000	
CALLSIGN (ES/VATSIM)	EGEL_R_TWR			Elev. 21ft	
LOCATION	Lat N056.36.07.000	Long W006.37.04.000		QFE= QNH	
LOCATION GEOGRAPHIC	5 NM WSW of Arinagour. Isle of COLL				
CHART SOURCE	NATS	LOCAL HAZARDS: -Flocks of Greylag Geese around the A/F and Island			
METAR AIRPORT	EGPL 113.950	all year round. Large numbers Airborne near sunrise/sunset.			
NAV AIDS	None; TIR VOR 117.7; MAC VOR 116.00			If a single A/C inbound, recommend 'Low pass, Go-Around', not below A800ft, to check for and clear runway of Birds, especially Geese and Gulls.	
RUNWAYS	Headings	Dimension	Surface		
	02 / 20	500M x 18M	Asphalt		
AIRSPACE	CLASS	Transition level 3000ft		Airspace above is Class C FL195, London FIR	
CIRCUITS	Left Hand, A1000ft, If single A/C recommend 'Low pass, Go-Around', not below A800, Bird clearance				
REMARKS	Monitor Tiree Information 122.700, inbound for runway 20, their centre-line passes within 1nm NW.				
HELICOPTERS	Helicopters as fixed wing, approach/depart not below A1000ft, due Bird traffic. Be aware of downwash when near other A/C.				



ALL PILOTS: PLEASE PUT YOUR A/C CALLSIGN AFTER YOUR NAME.
NOT TO BE USED FOR REAL WORLD OPERATIONS