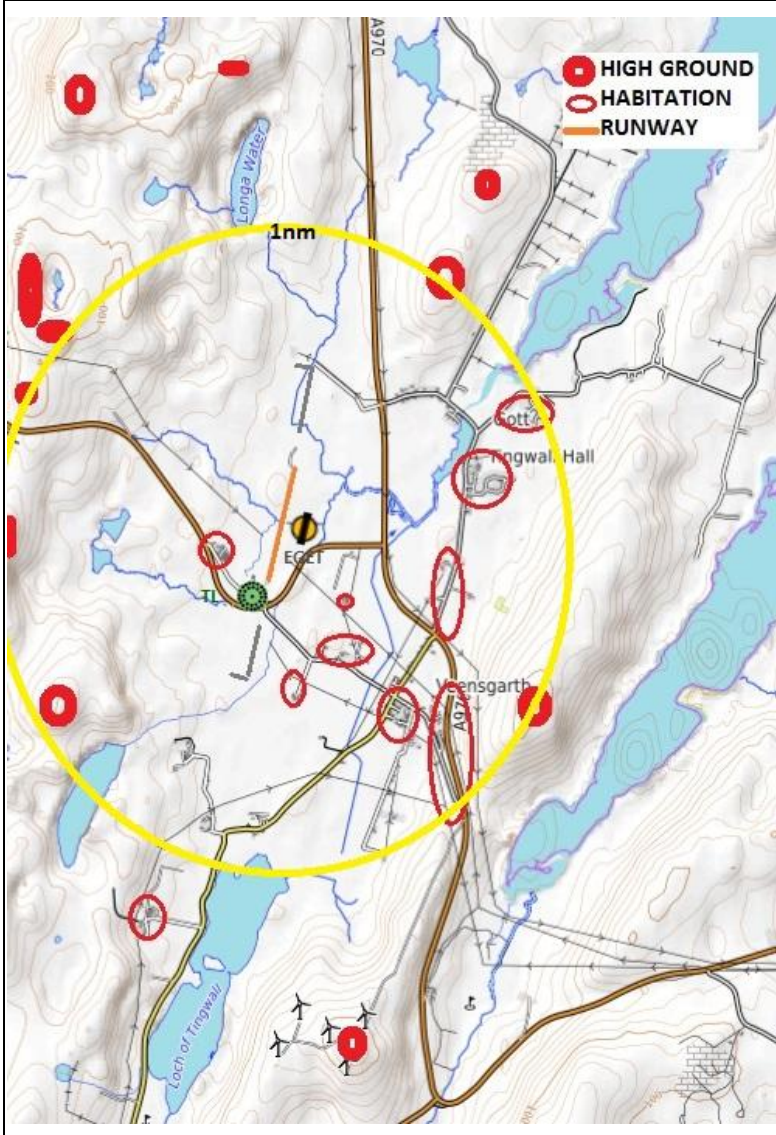
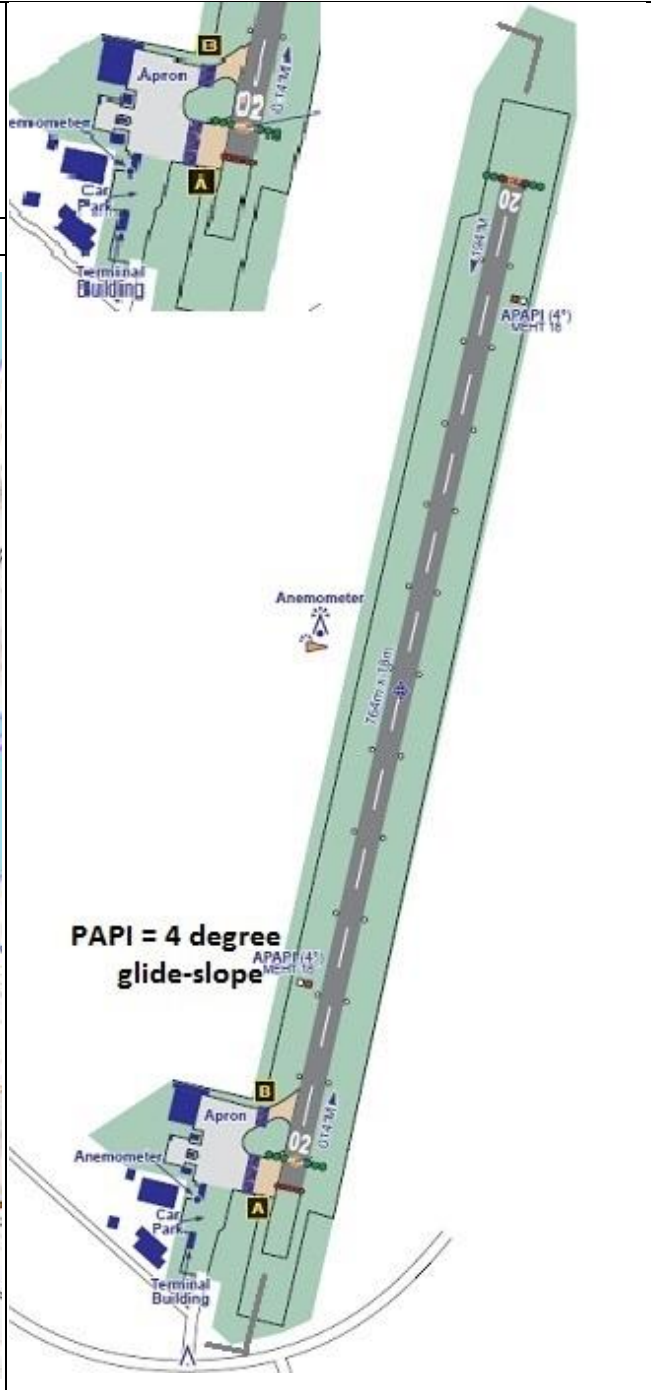


AIRFIELD NAME	March 20	TINGWALL		EGET	Scotland
CALLSIGN (A/C RADIO)	Tingwall Information			125.305	
CALLSIGN (ES/VATSIM)	EGET_I_TWR			APP Sumburgh 123.150	
LOCATION	N060.11.31.000	W001.14.37.000		Elev. 162ft	
LOCATION GEOGRAPHIC	4nm NW of Lerwick			Conspicuity	
CHART SOURCE/VOR	NATS	GEESE, GULLS and other large species are a hazard		QFE= QNH -5HPscs	
METAR AIRPORT	EGEP 125.850	LOCAL HAZARDS: The A/F is surrounded by high ground, navigate with care, especially in poor weather, REMAIN VFR AT ALL TIMES.			
NAV AIDS [NOT RW]	NDB, TL 376				
RUNWAYS	Headings	Dimension	Surface	NO FLY AREAS: Any habitation, below circuit height, especially those highlighted on the chart below	
	02 / 20	764M x 18M	Asphalt		
AIRSPACE	CLASS G	Transition level 6000ft		Airspace above Class C, Scottish FIR FL195	
CIRCUITS	1000ft QFE	CIRCUITS to NW. 02 LH, 20 RH: CAUTION HIGH GROUND.			

SPECIAL RULES START UP request, mandatory, if you must start engines to avoid drained batteries, ensure you report 'engine(s) started', at first contact.

REMARKS If the wind is 165°-170°, pilots may expect turbulence, towards the A/F from the wind turbines on Burradale Hill, 1.5nm E by S. When surface wind is 090 to runway heading, runway 20 is preferred due to better visibility from the AFISO control room.

HELICOPTER OPERATIONS: As Fixed Wing



PILOTS: PLEASE PUT YOUR A/C CALLSIGN AFTER YOUR NAME.
NOT TO BE USED FOR REAL WORLD OPERATIONS