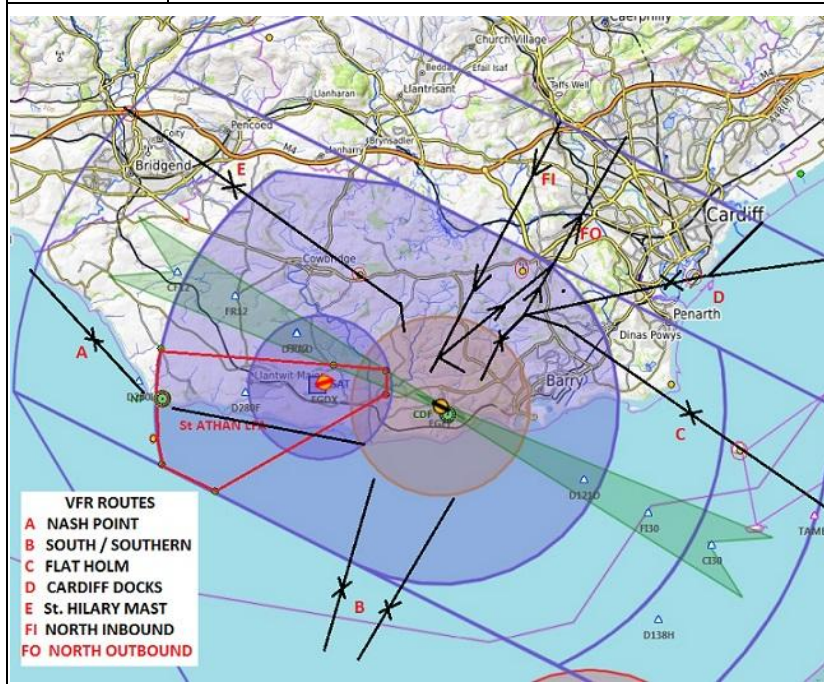
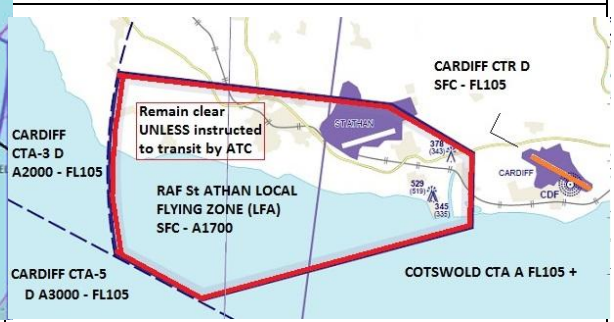
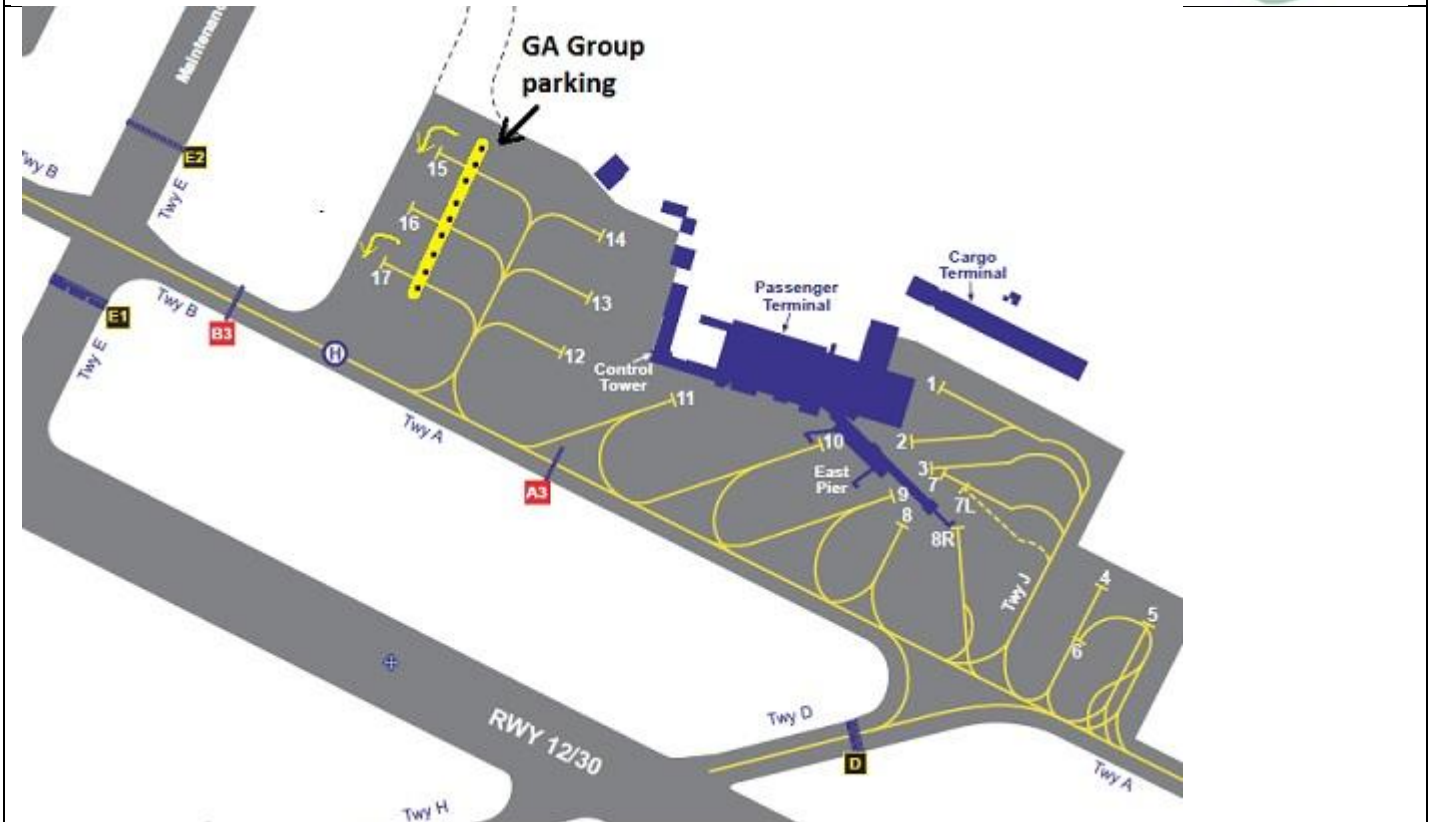
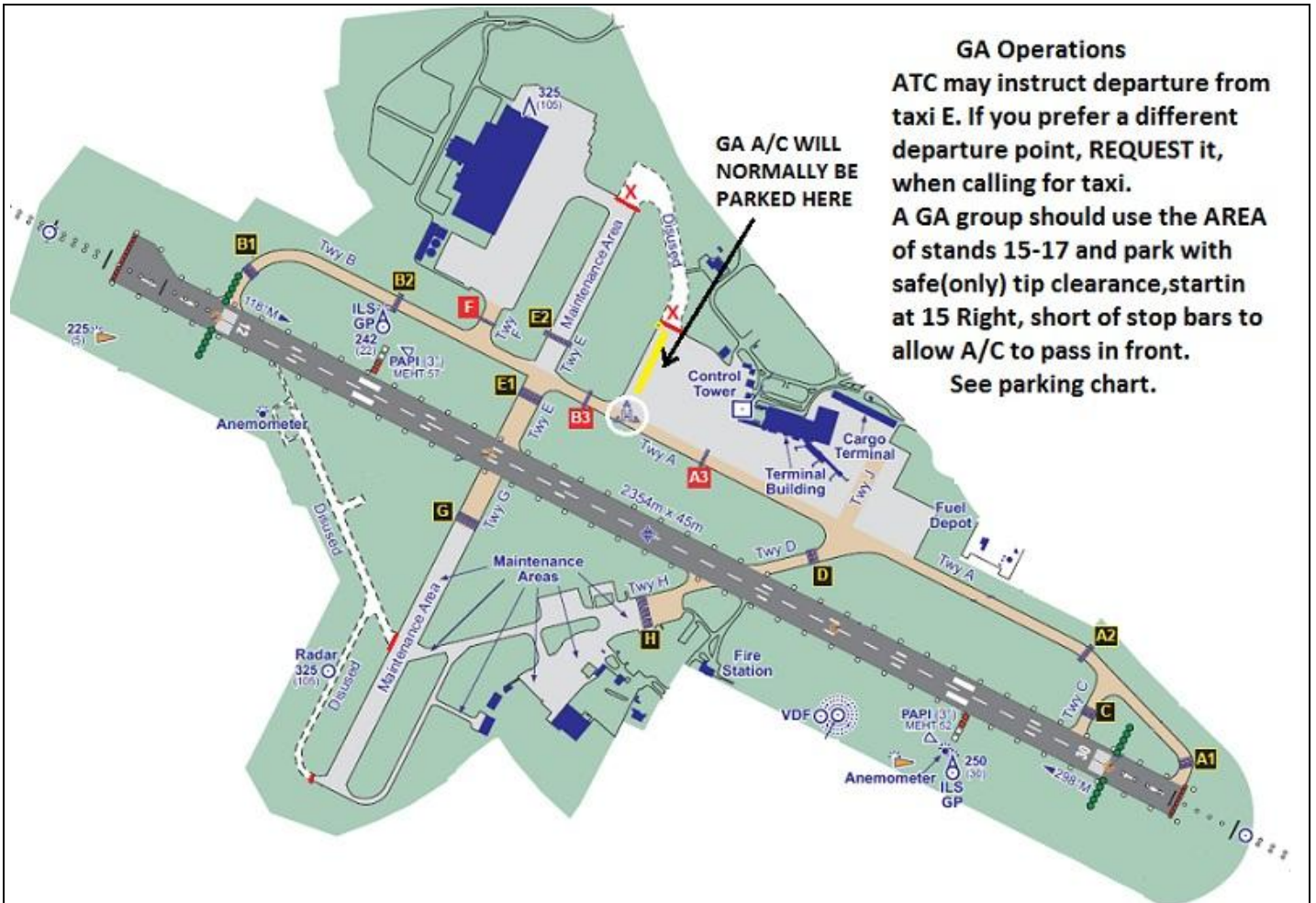


AIRFIELD NAME		March 20		<b>CARDIFF</b>		EGFF	West
CALLSIGN (A/C RADIO)		Cardiff Tower				113.10	
CALLSIGN		EGFF_TWR				Elev. 220ft	
LOCATION		Lat N051.23.48.000		Long W003.20.36.000		Conspicuity	
LOCATION		8.5nm SW of Cardiff; RAF St. Athan - 3nm N by W.				Radar. 125.855	
CHART SOURCE/VOR		NATS	<b>NO NORDO AIRCRAFT; NO VFR CIRCUIT TRAINING</b>			App. 119.150 / 125.855	
METAR AIRPORT		EGFF 132.480 MHz		ILS/ I-CWA 110.700MHz		QFE= QNH-7 HPscls	
NAV AIDS [NOT RW]		NDB/ CDF 388.50kHz		NB. If required to use Taxiways G or H, they are ONE-WAY			
RUNWAYS	Headings	Dimension	Surface	<b>Departing A/C: On first contact, STATE - A/C type, Stand number, ATIS letter (received), any taxi request</b>			
	12 / 30	2392m x 46m	Grooved Asphalt				
AIRSPACE	CLASS D	Transition level 6000ft		Airspace above Class Class A Alt 10500. Airway			
CIRCUITS		Normally North. 12 LH. 30 RH. Unless advised by ATC					
NO FLY AREA	<b>St Athan Local Flying Zone, UNLESS INSTRUCTED BY ATC - Nash VFR route.</b> Chemical works at Barry.						
LOCAL HAZARDS	Proximity of RAF St.Athan, 3nm West. Also helicopters in/out of St Athan, Cardiff and Cardiff heliport. Sea Birds, Proximity of Cardiff City Heliport, to East VFR route						
SPECIAL RULES	<b>ALL departing A/C, on first contact state A/C type, stand and ATIS letter.</b> Use of Taxi E requires ATC approval. Southside of runway. One way system. R30 depart via H. R12 depart via G. Or as advised by ATC. <b>When runway 12 in use and St. Athan LFZ active NO VISUAL APPROACHES. All A/C use ILS</b>						
REMARKS	<b>Due to proximity of RAF St Athan, inbound and outbound VFR A/C may be required to navigate via a specific VRP. See list and chart, below.</b> <b>Request entry to CTA/CTR AT LEAST 10 minutes before zone boundary.</b> Normally VFR A/C will be required to use the designated VFR Routes. <b>See the area and VFR routes charts below.</b>						
	VFR PILOTS SHOULD EXPECT TO FOLLOW the designated VFR routes AS INSTRUCTED by ATC. IF NO IFR TRAFFIC ATC <b>MAY</b> provide more direct routing. <b>LISTEN and COMPLY.</b> ATC will expect VFR pilots to be familiar with the VFR routes, follow them as instructed, comply with heights given and remain VMC at all times, or notify ATC at once. <b>SPECIAL NOTE.</b> NASH POINT in/out transits St Athan local area. MAINTAIN altitudes issued by ATC. <b>BUT REMEMBER. THE VFR PILOT IS RESPONSIBLE FOR HIS OWN SEPARATION FROM OTHER TRAFFIC AT ALL TIMES. ALWAYS have in-mind the rules for VFR flight over built-up areas.</b>						
HELICOPTER OPERATIONS	<b>As fixed wing and ATC instructions. VMC at all times.</b>						



**NOISE ABATMENT**  
**DEPARTING GA A/C should use the entry-point to the runway which will enable them to achieve not below 800ft over the airfield boundary at cruise-climb settings. Turnout as advised by ATC.**  
**INBOUND GA A/C MUST adhere to height restrictions issued by ATC. On final, DO NOT descend below glide path (as indicated by the PAPIs.)**





Preferred parking (CIX) for GA A/C is as above, occupying as few stands as appropriate to A/C safety. Otherwise as instructed by ATC. NOTE Noise abatement rules, regarding departures and use of runway.

**PILOTS:** PLEASE PUT YOUR A/C CALLSIGN AFTER YOUR NAME. **NOT TO BE USED FOR REAL WORLD OPERATIONS**

**CARDIFF VRPs**

VRP	Geo location	PlanG	NDB CDF <sup>0</sup>	ILS DME
Cardiff Docks	N051.27.24 W003.09.06	51.4566666 -3.1516666	063 <sup>0</sup> M	7nm
Clatworthy Reservoir	N051.04.23 W003.22.09	51.0730555 -3.3691666	185 <sup>0</sup> M	19nm
Flat Holm Lighthouse	N051.22.32 W003.07.07	51.3755555 -3.1186111	099 <sup>0</sup> M	8nm
Lavernock Point	N051.24.23 W003.10.14	51.4063888 -3.1705555	084 <sup>0</sup> M	6nm
Llandegfedd Reservoir	N051.41.30 W002.58.15	51.6916666 -2.9708333	039 <sup>0</sup> M	22nm
M4 Junction 24	N051.36.07 W002.55.32	51.6019444 -2.9255555	052 <sup>0</sup> M	20nm
M4 Junction 36 - Bridgend Svcs	N051.31.56 W003.34.24	51.5322222 -3.5733333	315 <sup>0</sup> M	11nm
Minhead	N051.12.21 W003.28.30	51.2058333 -3.4750000	206 <sup>0</sup> M	12nm
Nash Point Lighthouse	N051.24.03 W003.33.08	51.4008333 -3.5522222	275 <sup>0</sup> M	7nm
Nash South -St Athan c/l	N051.22.53 W003.33.27	51.3813888 -3.5575000	266 <sup>0</sup> M	8nm
Old Severn Bridge - M48	N051.36.40 W002.38.37	51.6111111 -2.6436111	064 <sup>0</sup> M	29nm
St Hilary TV Mast - is A1161	N051.27.27 W003.24.11	51.4575000 -3.4030555	329 <sup>0</sup> M	4nm
Taff Ely Wind Farm	N051.34.03 W003.28.16	51.5675000 -3.4711111	336 <sup>0</sup> M	11nm
Wenvoe TV Mast - is A1294	N051.27.34 W003.16.54	51.4594444 -3.2816666	029 <sup>0</sup> M	5nm

**CARDIFF VFR OUTBOUND ROUTES. (see chart)**

Name	Exit Point	Rwy	Alt.	Route
VFR St Hilary	Bridgend	30/12	A1500	Route north of St Hilary TV Mast and leave CAS to the west, routing north of Bridgend at Junction 36 VRP.
VFR North	North	30/12	A1500	Route between the St Hilary and Wenvoe TV masts and leave CAS to the north.
VFR Wenvoe	W of Cardiff docks	30/12	A1500	Route east of the Wenvoe TV masts and leave CAS to the northeast.
VFR Flat Holm	NE of Flat Holm Light	30/12	A1500	Route north of Barry then north of Flat Holm Island, and leave CAS at the east/southeast zone boundary.
VFR South	N of Minehead	30	A1500	Route east of the quarry (1 nm west of Cardiff airport) and leave CAS to the south towards Minehead VRP.
VFR South	N of Minehead	12	A1500	Route south and leave CAS to the south towards Minehead VRP. <b>ATC will clear to &gt;A1500 when able, both South Routes.</b>
VFR Nash Point	Nash Point	30	A1500	Route east of the quarry (1 nm west of Cardiff airport), leave CAS to the west along the coast, over water, via Nash Point.
VFR Nash Point	Nash Point	12	A1500	Leave CAS, west along the coast, <b>over water</b> , via Nash Point.

BOTH NASH ROUTES normally only available when St Athan is NOT active. UNLESS under RADAR ATC.

**CARDIFF VFR INBOUND ROUTES. (see chart)**

Name	Entry Point	Rwy	Alt.	Route
VFR St Hilary	Bridgend	30/12	A1500	Enter CAS via Bridgend and route north of St Hilary TV Mast, then as directed by Cardiff ATC.
VFR North	North	30/12	A1500	Enter Cardiff CAS from the north between the St Hilary and Wenvoe TV Masts, then as directed by Cardiff ATC.
VFR Wenvoe	W of Cardiff docks	30/12	A1500	Enter Cardiff CAS via the Wenvoe TV mast, then as directed by Cardiff ATC.
VFR Cardiff Docks	Cardiff docks	30/12	A1500	Enter Cardiff CAS via Cardiff Docks, then as directed by Cardiff ATC.
VFR Flat Holm	N. Flat Holm Light	30/12	A1500	Enter Cardiff CAS via Weston aerodrome, route north of Flat Holm Lighthouse towards Lavernock Point, then as directed by ATC.
VFR South	N. Minehead	30	A1500	Enter Cardiff CAS to the south, then as directed by Cardiff ATC.
VFR South	N of Minehead	12	A1500	Enter Cardiff CAS from the south, remaining east of the quarry (1 nm west of Cardiff airport) then as directed by Cardiff ATC.
VFR Nash Point	Nash Point	30	A1500	Enter Cardiff CAS via Nash Point, route along the coast, remaining over water, then as directed by Cardiff ATC.
VFR Nash Point	Nash Point	12	A1500	Enter Cardiff CAS via Nash Point, <b>along the coast</b> , remain over water and east of quarry (1 nm west Cardiff airport), then as directed by ATC.

BOTH NASH POINT Routes, normally only available when St Athan is not active. Unless with RADAR ATC