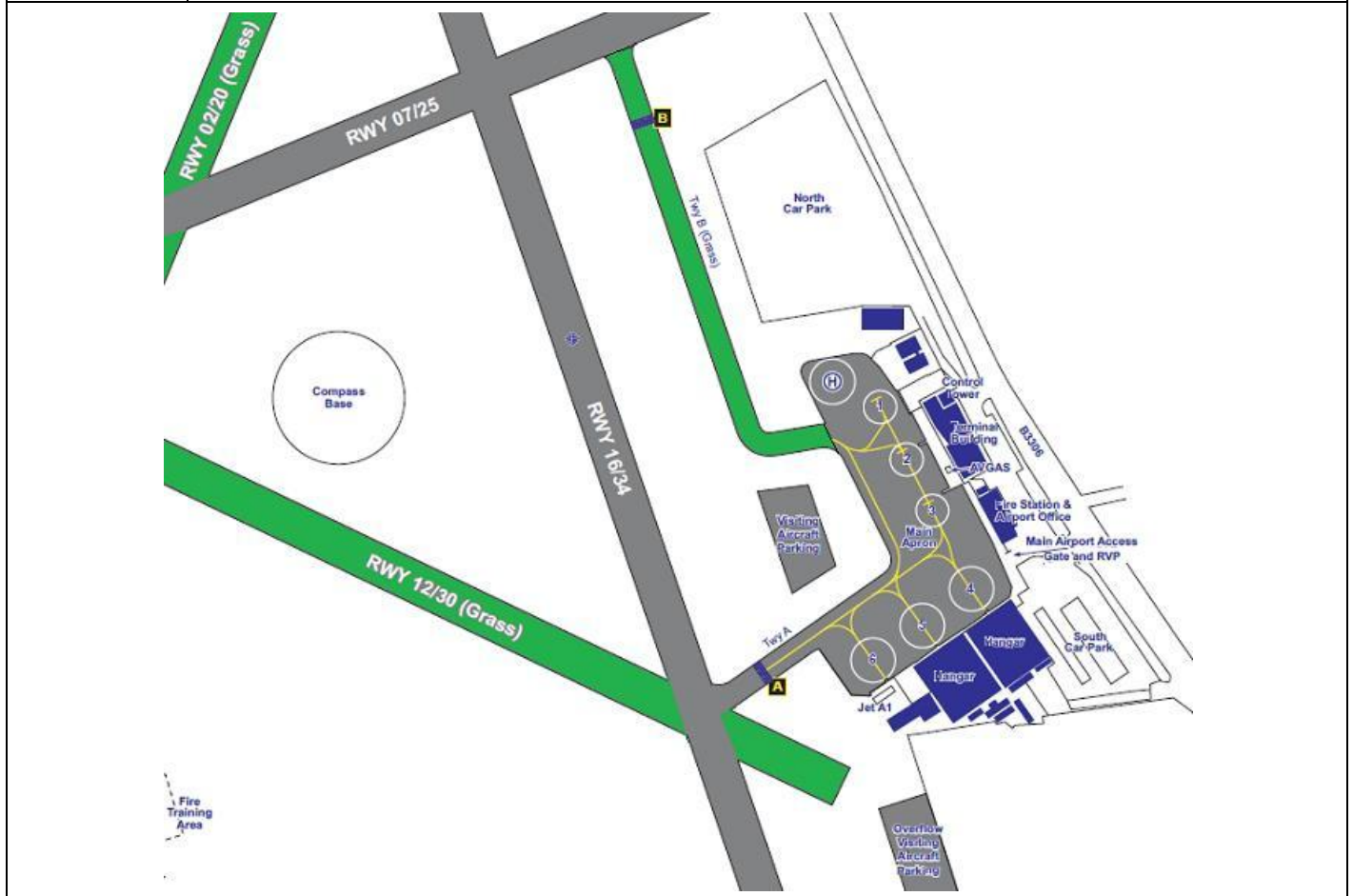


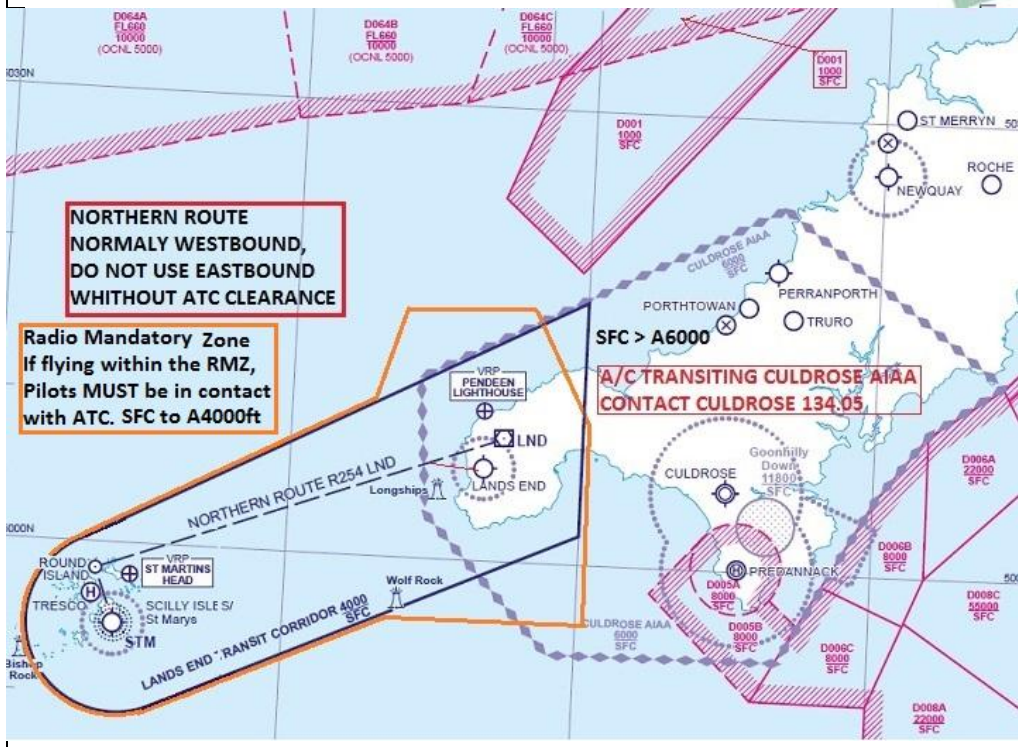
AIRFIELD NAME AND ICAO		November 21	LANDS END		EGHC	West
CALLSIGN (A/C RADIO)		Lands End Tower			120.250	
CALLSIGN (ES/VATSIM)		EGHC_TWR			Ground. ----	
LOCATION		Lat N050.06.10.000	Long W005.40.14		Elev.398 ft	
LOCATION GEOGRAPHIC		5nm W of Penzance			Conspicuity ----	
CHART SOURCE	NATS	Transiting Culdrose AIAA, contact Culdrose 134.05			QFE= QNH-13 HPscls	
METAR AIRPORT; NAVAIDS		EGDR 128.70	VOR LND 114.20 2.4nm NNE R037/217		NO NORDO AIRCRAFT	
RUNWAYS	Headings	Dimension	Surface & notes		Call for Engine start required. After refuel, pilots must request repositioning taxi, ASAP. Fixed Wing arrival / departure permitted, ONLY IF THE RUNWAY IS VISIBLE TO ATC.	
	07 / 25	693m x 18m	Asphalt (RW)			
	16 / 34	784m x 18m	Asphalt (RW)			
	02 / 20	483m x 19m	Grass			
	12 / 30	478m x 18m	Grass		NB. Runway 30 unlicensed for LANDINGS	
AIRSPACE	CLASS G	Transition level 3000ft	Airspace above is Class D Culdrose AIAA(when active) Else G			
CIRCUITS		1000ft QFE / 1400ft QNH. ALL runways normally LH. May vary by ATC.				
NO FLY		ALWAYS ensure you arrive with reserves for Alternate A/F due weather can change VERY quickly.				
LOCAL HAZARDS		ONLY ONE Grass taxiway (taxi B). ALL GRASS UNSUTABLE for A/C. Use runways for taxiing. A/F prone to rapid wind and weather changes. Wind at 200ftQFE may significantly differ from surface wind. Wind turbulence / sink may be expected on ALL approaches.- cliffs. Circuits normally LH, but may be varied by ATC. MULTIPLE RUNWAYS may be in use.				
HELICOPTER OPERATIONS		If General visibility is LESS than 400m, NO HELICOPTER OPERATIONS. If hover taxiing near parked A/C remain AT LEAST 3 rotor diameters away. DO NOT use taxi Bravo due dust and FOD. Call for engine start required. Expect approach departure via Fixed wing patterns				
REMARKS		The A/F lies within the Culdrose AIAA. Exercise extreme caution due Mil. Activity. LANDS END TRANSIT CORRIDOR. A/C flying to / from EGHE Scillies, should use the corridor. 12-15nm wide up to 4000ft QNH. VFR A/C will normally use the northern corridor. For separation, when needed, EGHE TWR may instruct a direct track, inbound to LND. A/C are advised to call FOR TRANSIT to the corridor at least 15nm inbound LND.				



ALL A/C. Call AT LEAST 10nm inbound as weather can change very quickly, closing A/F to Fixed Wing A/C.

If transiting Culdrose AIAA, Call Culdrose 134.05, for service and clearance. AIAA is class D when active.

Helicopter hover taxi route to/from Helipad. Wheeled Helio use A



ATC - RMZ.
 ON VATSIM, TOP-DOWN.
 LONDON (W)
 CULDROSE or NEWQUAY APP.
 LAND'S END TWR or
 ST MARY'S TWR

ALL PILOTS: PLEASE PUT YOUR A/C CALLSIGN AFTER YOUR NAME.

NOT TO BE USED FOR REAL WORLD OPERATIONS