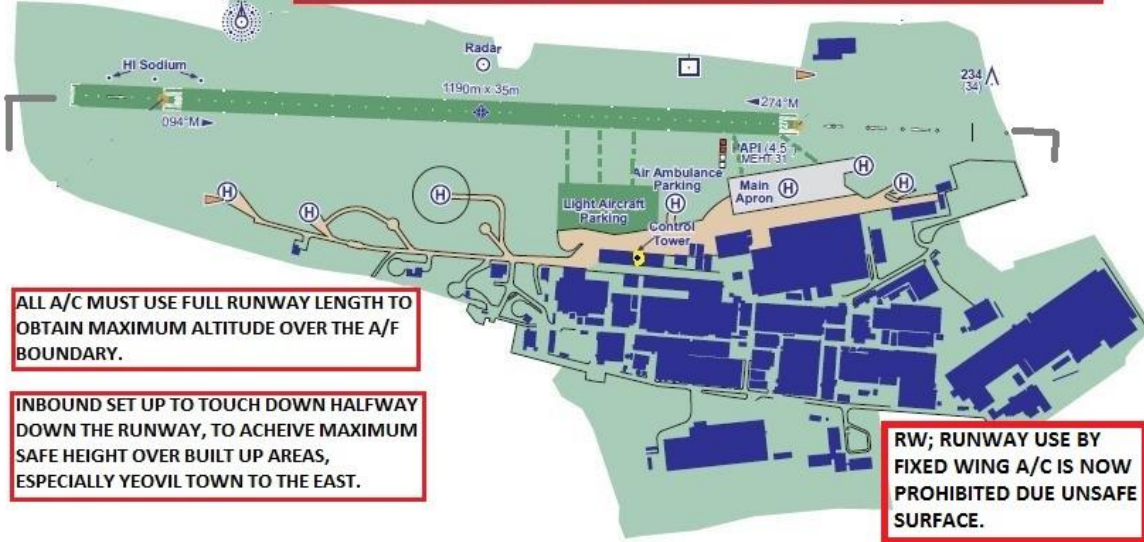


AIRFIELD NAME AND ICAO		June 20	<b>WESTLAND / YEOVIL</b>	<b>EGHG</b>	<b>W</b>
CALLSIGN (A/C RADIO)		Westland Tower/ Westland Information		125.405 / 130.800	
CALLSIGN (ES/VATSIM)		EGHG_TWR / EGHG_I_TWR		Ground.	
LOCATION		Lat N050.56.24.000	Long W002.39.31	Elev. 200ft	
LOCATION GEOGRAPHIC		1nm W of Yeovil. <b>4NM South of RN Yeovilton</b>		VFR Conspicuity ---	
CHART SOURCE	NATS	<b>NO NORDO A/C</b>		App. 130.800	
METAR A/P	EGTE 119.325	<b>NO DEADSIDE JOINS or OVERHEAD JOINS</b>		My QFE= QNH-6 HPscIs	
NAV AIDS	NDB/ YYL 343kHz	VOR/ YVL 109.05MHz	<b>ALL A/C, DO NOT OVERFLY BUILT UP AERAS EAST AND WEST BELOW 1000FTQFE. INBOUND TOUCH DOWN NOT BEFORE HALF WAY ALONG RUNWAY</b>		
RUNWAYS	Headings	Dimension	Surface		
	09 / 27	1190m x 35m	Grass		
AIRSPACE	CMATS	Trnsitn A3000	Airspace above CMATZ. YEOVILTON AIAA UP TO A6000		
CIRCUITS	1000ft QFE	<b>ALL Circuits to the South. 27 LH. 09 RH. SEE CHARTS AND RULES, BELOW.</b>			
NO FLY	<b>NORTH within the ATZ below 1500ft: NO FIXED WING or VISITING HELIO CIRCUITS</b>				
LOCAL HAZARDS	<b>Bird Concentrations ALL YEAR.</b> High ground 2.5nm SW (442ft QNH) with Radio mast (528ft QNH) A/F is within a built-up area. Much of which is civilian. <b>NOISE AVOIDANCE is required.</b>				
HELICOPTER OPERATIONS	<b>Same procedures as Fixed Wing. EXCEPT.</b> Due noise sensitive area beyond the Eastern boundary, <b>LOW 09 departures and low 27 late Base legs are prohibited.</b> SEE <b>BELOW</b> AND <b>ABOVE</b> 27 arrivals should aim to <b>touch down on the runway opposite the control tower.</b>				
SPECIAL RULES	<b>NOTE: RW; RUNWAY USE BY FIXED WING A/C IS NOW PROHIBITED. - UNSAFE SURFACE!</b> <b>INBOUND Joins from the SOUTH only. – SEE CHART - Plan final to land halfway along runway.</b> <b>OUTBOUND REMAIN ON C/L until MIN. 600ft on climb-out.</b> Easy if using <b>FULL RUNWAY.</b> Runway has undulating surface, caution taxiing fixed wing. Propeller strikes. Runway can become waterlogged after heavy rain. Plan a HIGH approach to reduce noise. Hangers, Trees and Houses pose collision hazards as well as causing ground air turbulence.				
REMARKS	<b>EGHG is INSIDE RNAS Yeovilton CMATZ – Sfc – 3000ft QNH. NOT ABOVE 1000FT QFE/A1300 IN ATZ</b>				

**MOST OF THE GRASS SOUTH OF THE RUNWAY CAN BE USED WITH CARE, 'BEST/SAFEST' TAXI AREA FOR FIXED WING IS OPPOSITE A/C PARKING AN EAST OF THE PAPIs TO MAIN APRON.**



**ALL A/C MUST USE FULL RUNWAY LENGTH TO OBTAIN MAXIMUM ALTITUDE OVER THE A/F BOUNDARY.**

**INBOUND SET UP TO TOUCH DOWN HALFWAY DOWN THE RUNWAY, TO ACHIEVE MAXIMUM SAFE HEIGHT OVER BUILT UP AREAS, ESPECIALLY YEOVIL TOWN TO THE EAST.**

**RW; RUNWAY USE BY FIXED WING A/C IS NOW PROHIBITED DUE UNSAFE SURFACE.**

**PILOTS: PLEASE PUT YOUR A/C CALLSIGN AFTER YOUR NAME.**

**NOT TO BE USED FOR REAL WORLD OPERATIONS**

