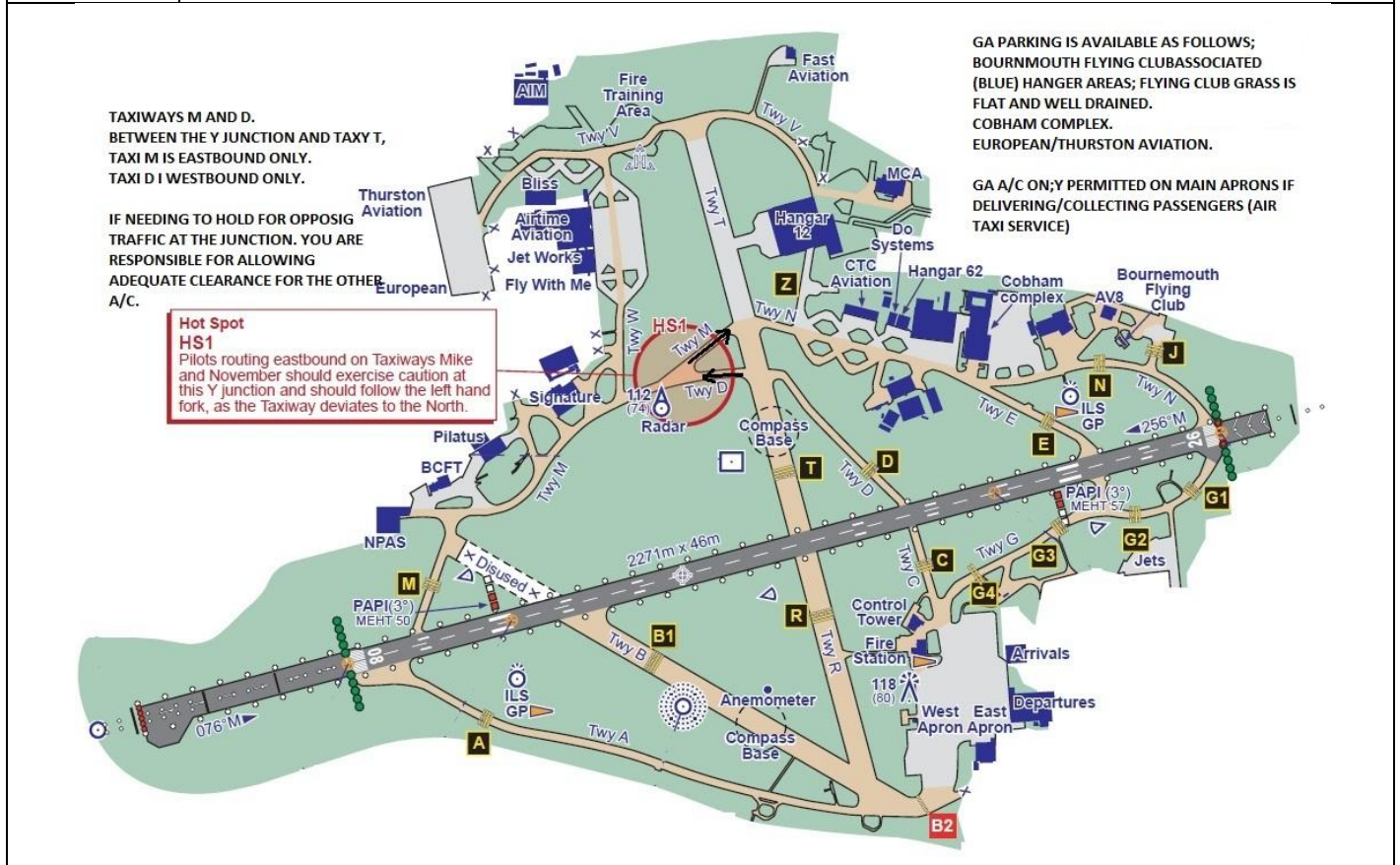
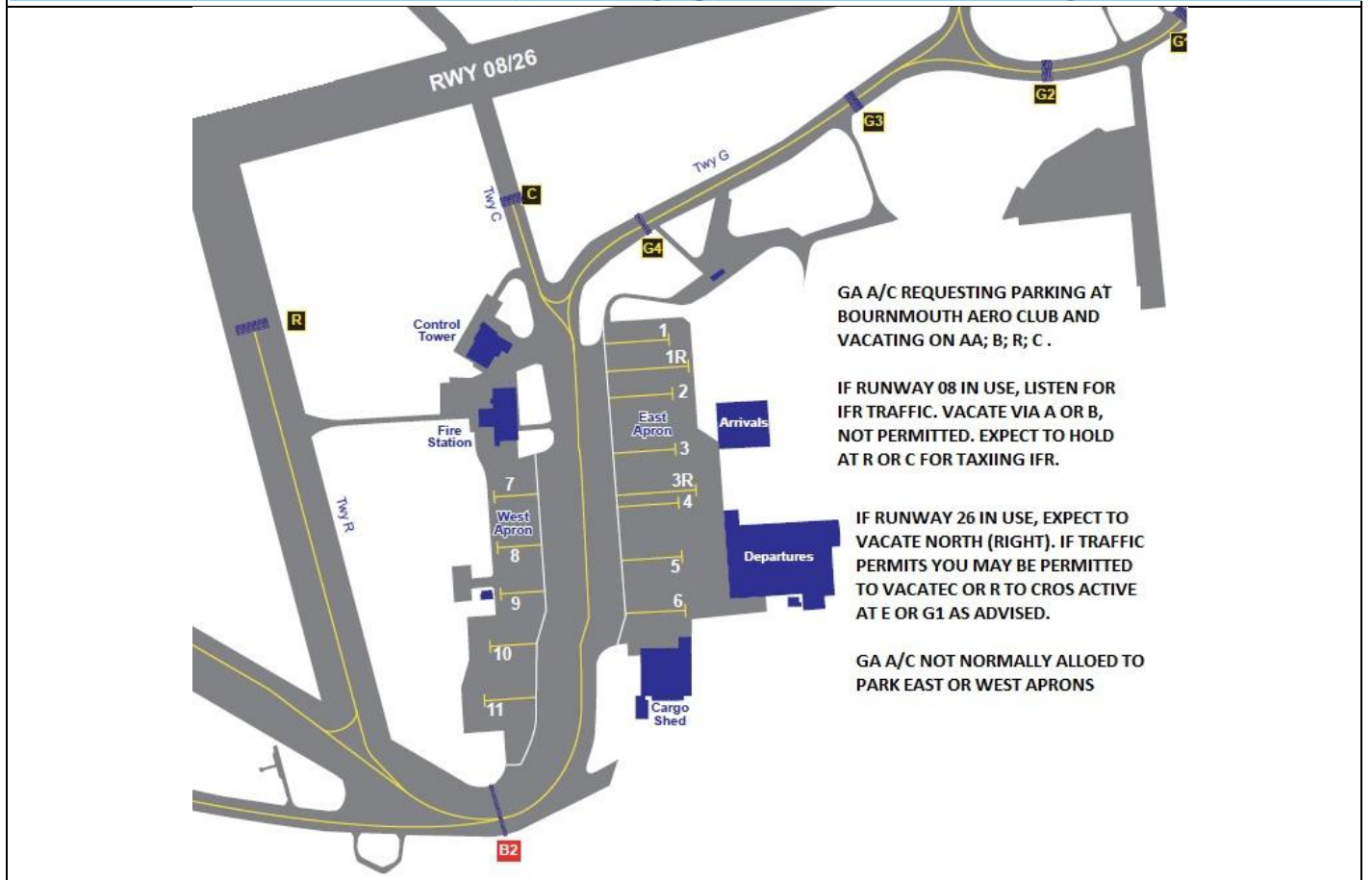
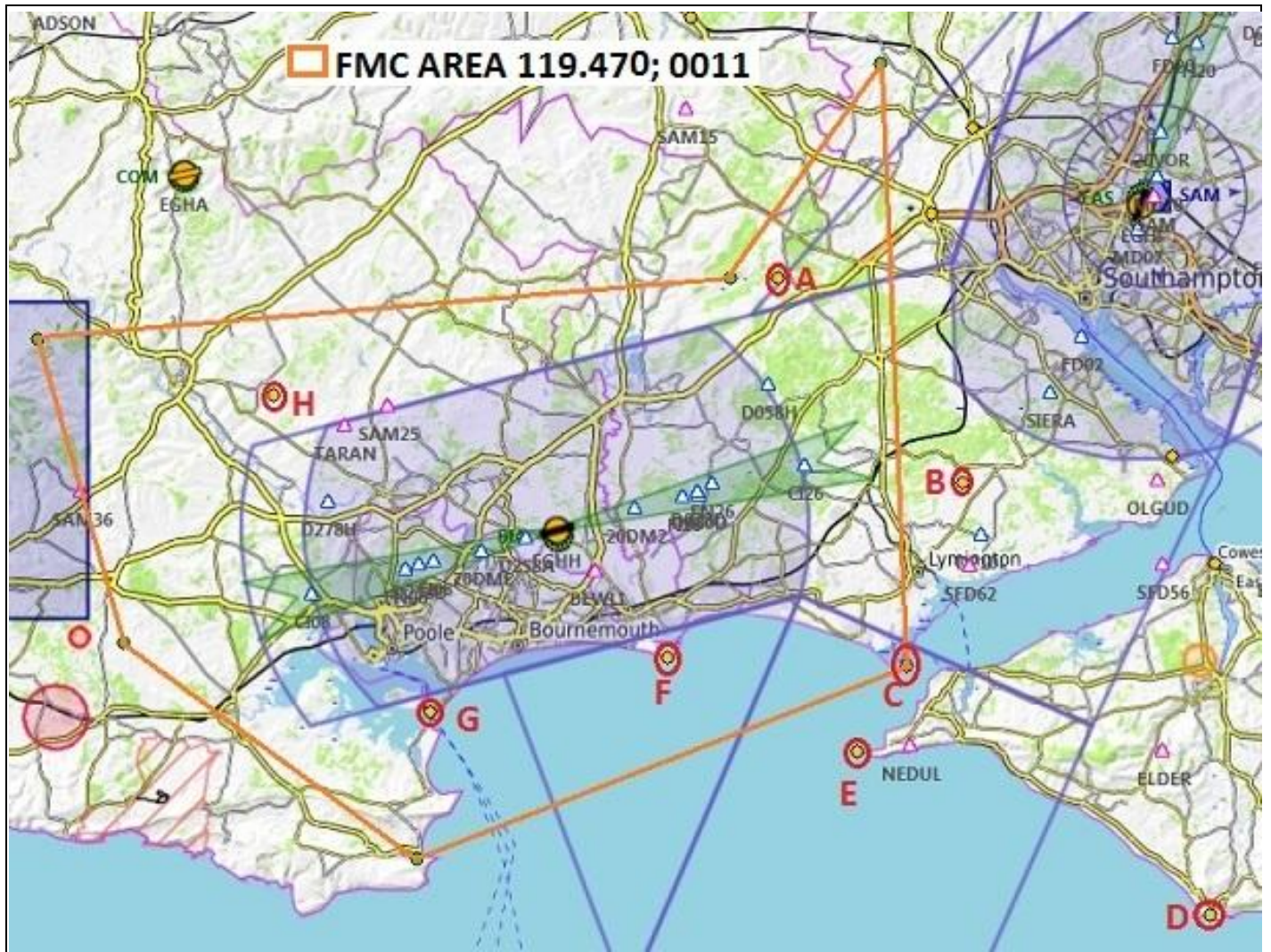
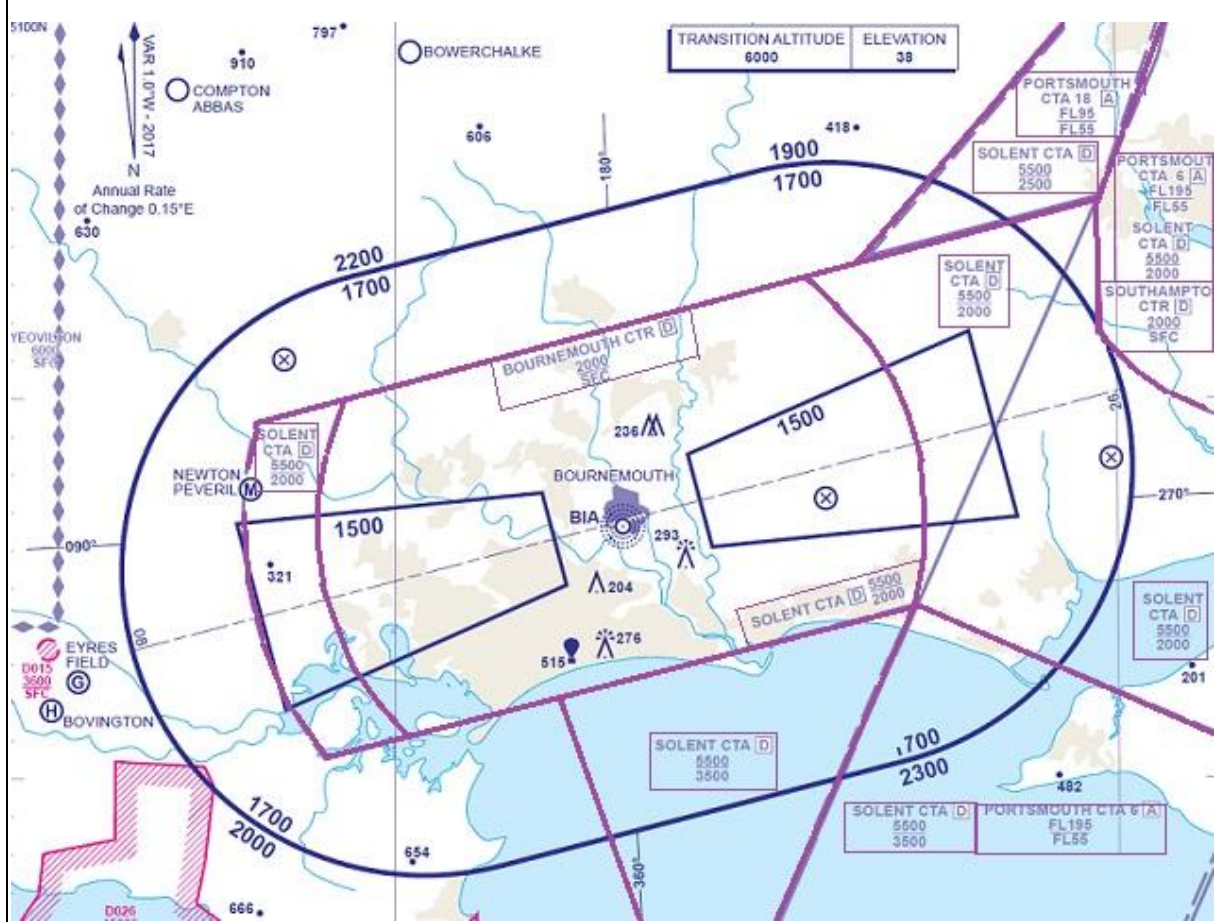
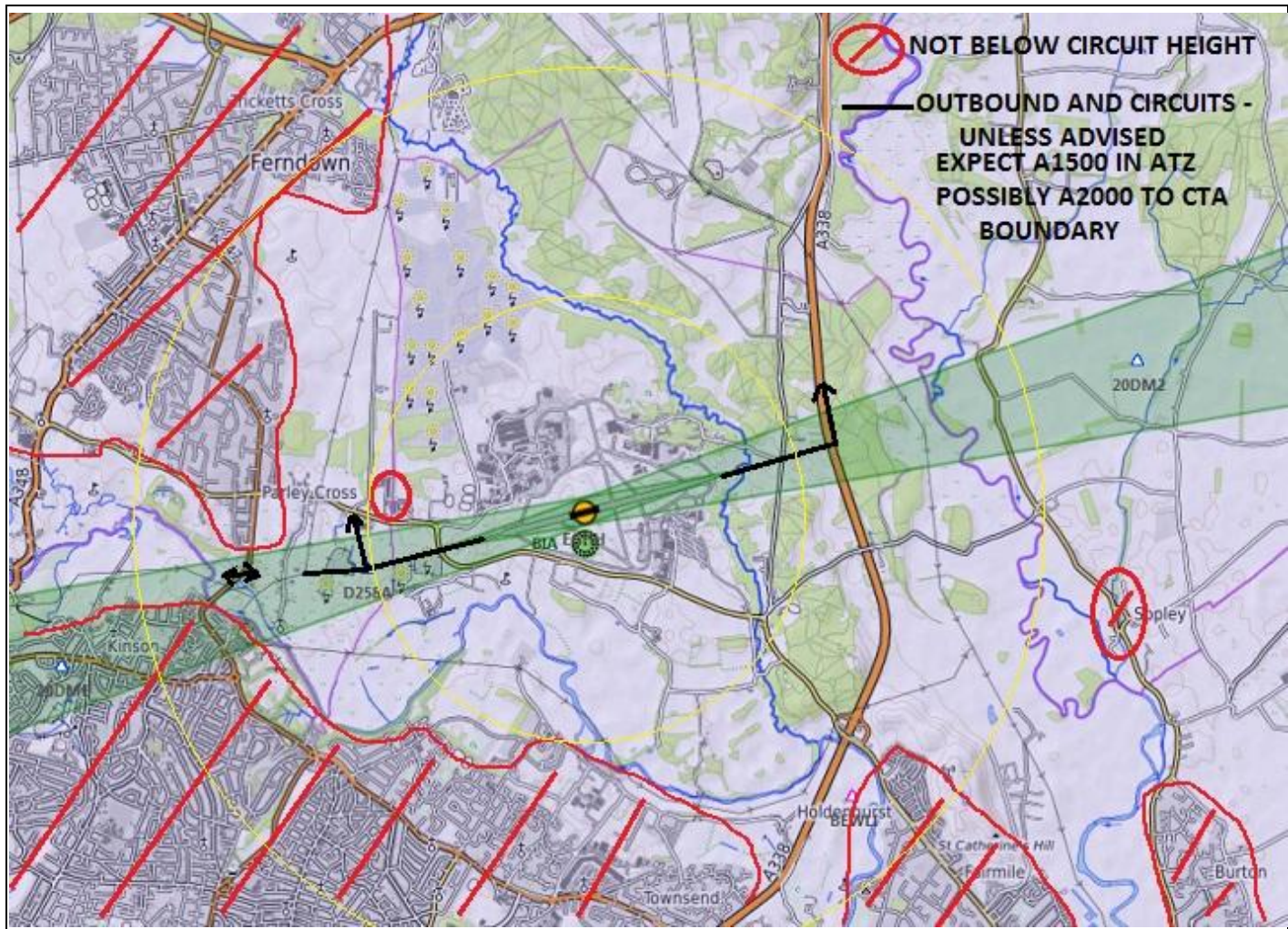


AIRFIELD NAME AND ICAO		June 20	<b>BOURNEMOUTH</b>	<b>EGHH</b>	<b>South</b>
CALLSIGN (A/C RADIO)		Bournemouth Tower			125.600
CALLSIGN (ES/VATSIM)		EGHH_TWR			APP. 119.470
LOCATION		Lat N050.46.48.000	Long W001.50.33.000	Elev. 38ft	
LOCATION GEOGRAPHIC		3.5nm NNE of Bournemouth			Conspicuity 7010
CHART SOURCE		NATS	Director 118.650	Ground 121.700	
METAR AIRPORT		EGHH 133.720	<b>NORDO A/C at discretion of ATC</b>		QFE= QNH
NAV AIDS (FSX / PLANG3)		NDB BIA 339.0kHz	ILS/ I-BH/I-BMH 110.500mHz		
RUNWAYS	Headings	Dimension	Surface		
	08 / 26	2271m x 46m	Asphalt/Concrete		
AIRSPACE	CLASS D CTR	Transition level 6000ft	Airspace above Class D A2000 Solent CTA		
CIRCUITS	1200ft QFE Jets, 1500ft	Normally, NORTH. 08 LH. 26 RH. May be varied by ATC. After departure <b>NO TURNS UNTILL ABOVE 700ft QNH</b>			
NO FLY	ALL built up areas below A2000. GA A/C to expect NOT ABOVE A1500 within the ATZ.				
LOCAL HAZARDS	Large A/C will normally use R or T, with Inbound and outbound <b>BACKTRACK OF THE RUNWAY.</b> LAND AND SEA BIRDS. <b>MODE Charlie is NOT to be used to/from the Runway (i.e. during taxiing).</b>				
HELICOPTER OPERATIONS	<b>Wheeled helicopters will ground taxi, using taxiways and runway.</b> <b>All other helicopters will HOVER taxi using taxiways and runway.</b> <b>Helicopters will alight and depart as directed by ATC. Inbound/outbound routing as per ATC.</b> <b>AVOID overflying ALL parked A/C. Helicopter circuits NORTH of the runway at A700ft</b>				
SPECIAL RULES	<b>Taxiway Bravo used with ATC approval ONLY. ALL OUTBOUND A/C Say where parked, on 1st contact</b> <b>GA A/C will vacate as instructed, outbound expect to use N and M taxiways.</b> <b>GA A/C parking at - Bournemouth flying club/Cobham complex; European pan or Fast Aviation.</b>				
REMARKS	If flying in the FMC, <b>MONITOR APP</b> on (119.470), squawk <b>0011</b> (listening code). See chart below The following VRPs will be used for VFR A/C. <b>A. Stoney Cross (Disused A/D); B. Beaulieu Disused A/D; C. Hurst Castle;</b> <b>D. St Catherine's Point; E. Needles Lighthouse; F. Hengistbury Head;</b> <b>G. Sandbanks; H. Tarrant Rushton (Disused A/D)</b> Expect some of the Southampton VRPs to be used as well.				







**PILOTS:**  
PLEASE PUT  
YOUR A/C  
CALLSIGN  
AFTER YOUR  
NAME.

**NOT TO BE  
USED FOR  
REAL WORLD  
OPERATIONS**