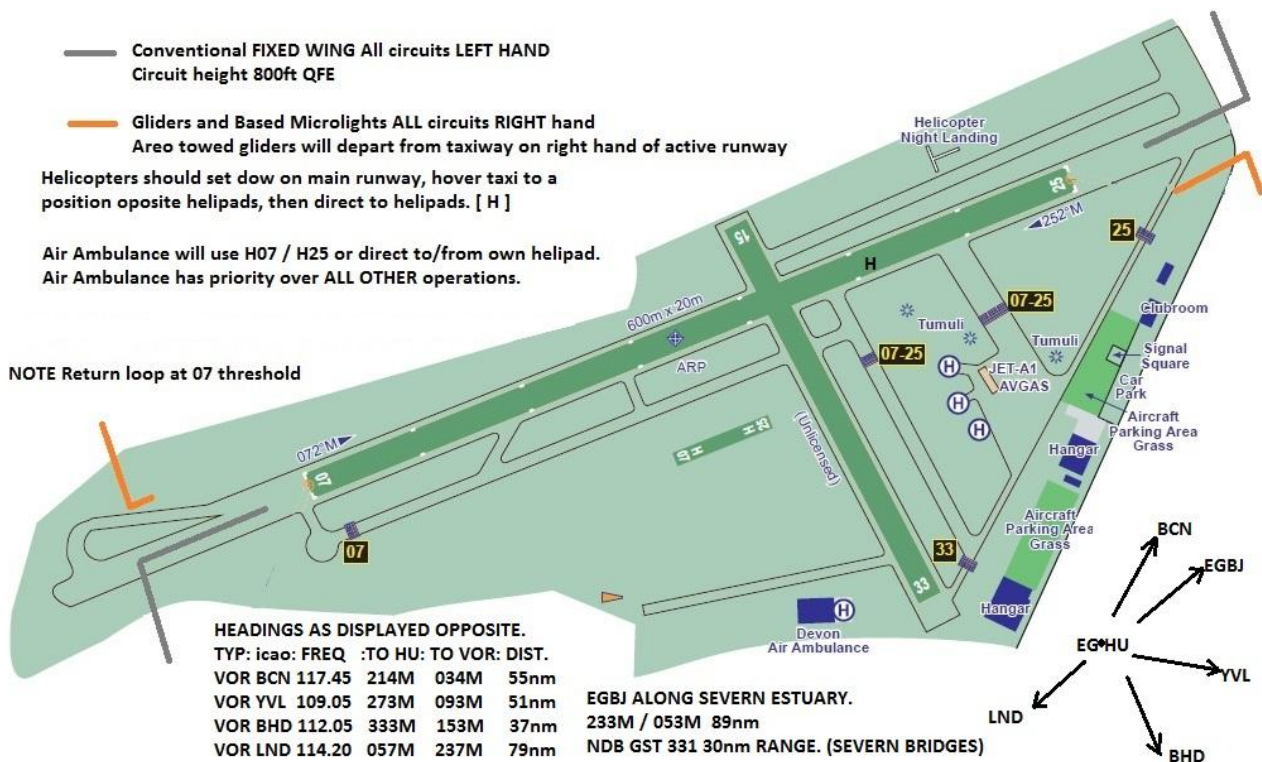


AIRFIELD NAME AND ICAO		October 20	EAGLESCOTT		EGHU	W
CALLSIGN (A/C RADIO)		Eaglescott Radio			123.00	
CALLSIGN (ES/VATSIM)		EGHU_R_TWR			Ground. ---	
LOCATION		Lat N050.55.43.000	LongW003.59.22.000		Elev. 655ft	
LOCATION GEOGRAPHIC		6nm ESE of Torrington			QFE= QNH -21 HPscIs	
CHART SOURCE		EGHU website/fsx/planG		Overhead join advised if A/F busy or no ATC		
METAR AIRPORT		EGDC Chivenor 128.00		Devon Air Ambulance has precedent over ALL other operations. "All traffic, Air Ambulance departing to North". Means - keep clear of his route and keep a good lookout.		
NAV AIDS (FSX / PLANG3)		NONE		Gliders and Microlights operate most of the time.		
RUNWAYS	Headings	Dimension	Surface			
	07 / 25	600m x 20m	Grass			
AIRSPACE	CLASS G	Transition level 3000ft		Airspace above is Class C Alt 19500 Lon FIR		
CIRCUITS	800ft QFE	GA. LH. Gliders and Microlights RH				
NO FLY	Avoid local villages; Dead side of active runway below 2000ft QFE, within the ATZ.					
HAZARDS	Glider Aero tow launches from grass next to runway - right hand side.					
HELICOPTER OPERATIONS	Helicopters should expect to use H07 / H25, or set down on disused runway and hovertaxi to heli pad. Helicopters should remain well clear of taxiing and parked Gliders and Microlights					
SPECIAL RULES	Not licensed for public transport use and w/ends, unless arranged. (PPR) VFR ONLY; No AGRO A/F is CLOSED. REMAIN CLEAR of radar site to North East					
REMARKS	Fuel is available. There are 4 farm-strips within 10nm					



PILOTS: PLEASE PUT YOUR A/C CALLSIGN AFTER YOUR NAME. NOT TO BE USED FOR REAL WORLD OPERATIONS