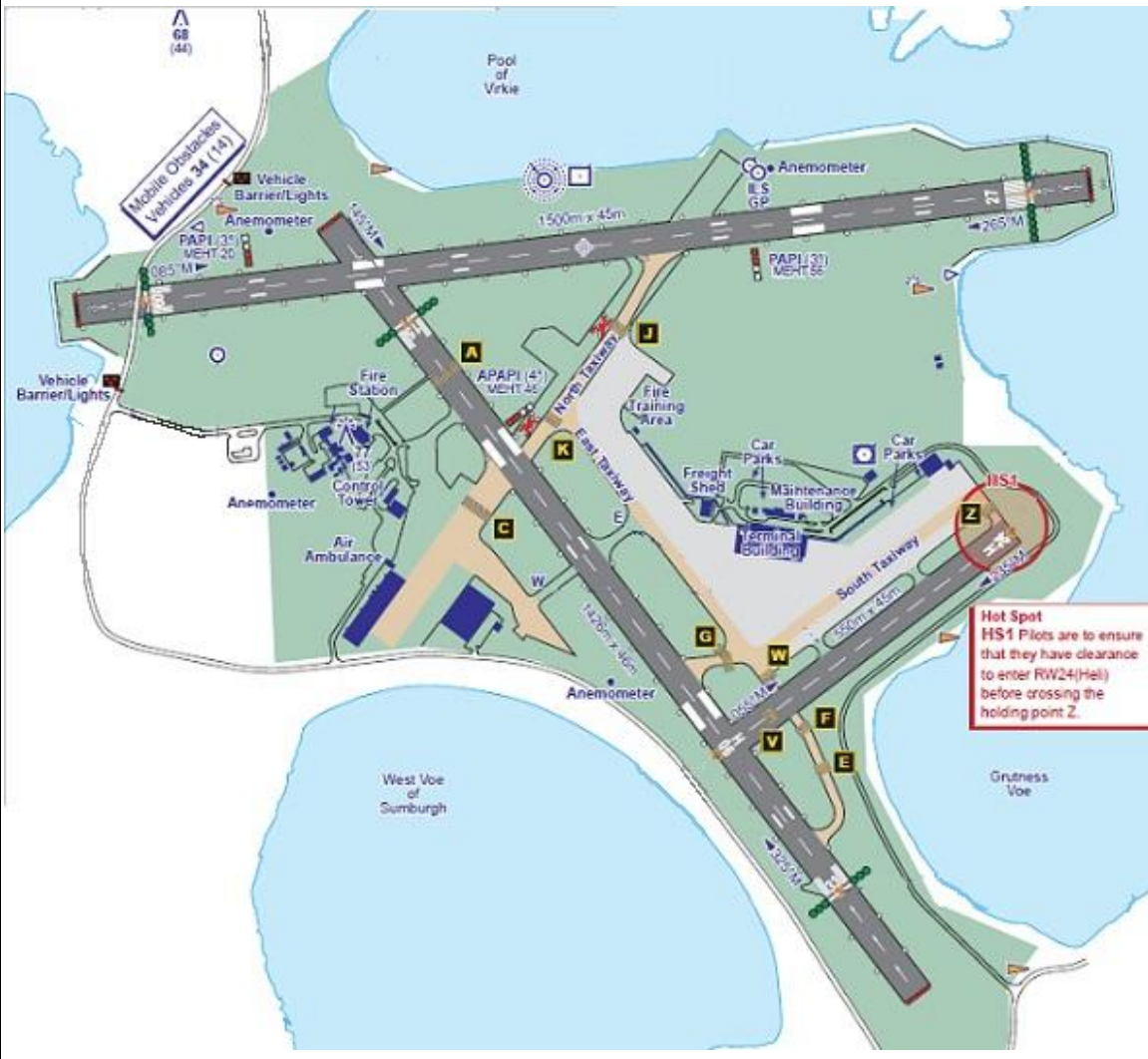
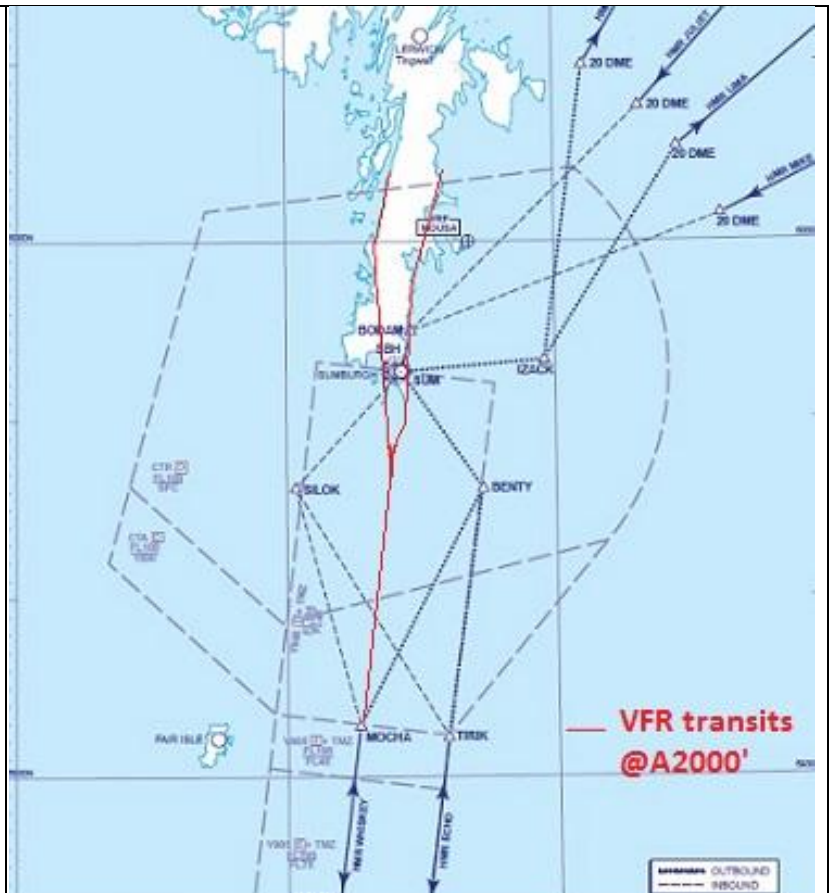
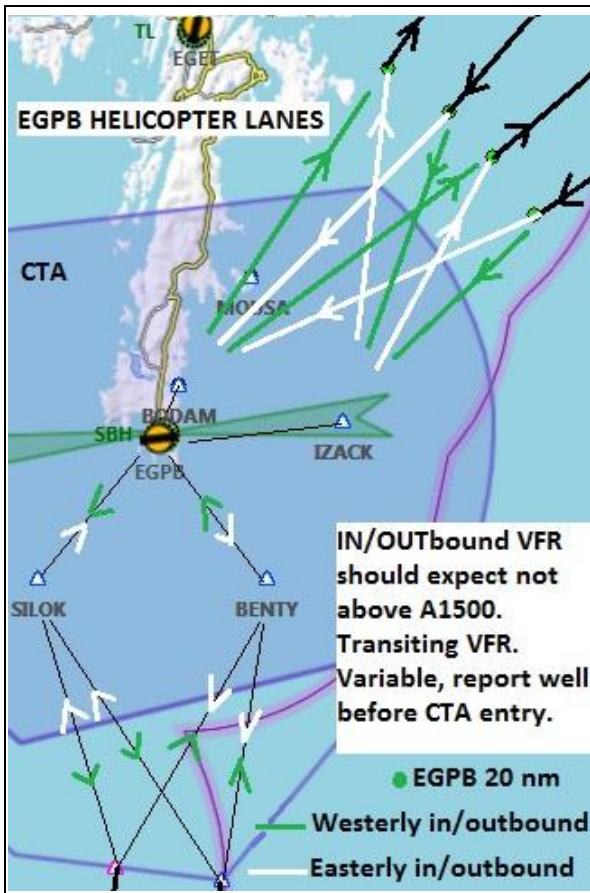


AIRFIELD NAME AND ICAO		December 20	SUMBERG		EGPB	Scotland
CALLSIGN (A/C RADIO)		Sumberg Tower / Sumberg Information			118.250	
CALLSIGN (ES/VATSIM)		EGPB_TWR / EGPB_I_TWR			APP /radar 131.300	
LOCATION		N059.52.53.000	W001.17.38.000		Elev. 21ft	
LOCATION GEOGRAPHIC		176nm South of Lerwick			Conspicuity	
CHART SOURCE/VOR		NATS	ALL A/C must request startup and clearance		QFE= QNH	
METAR AIRPORT		EGPB 125.850	If GA A/C need to start, ensure A/C beacon is active.			
NAV AIDS (FSX / PLANG3)		NDB SBH 351	VOR SUM 117.350	ILS 09/27 108.500		
RUNWAYS	Headings	Dimension	Surface	ALL A/C flying within the CTA will be subject to ATC control. Integration of Fixed and rotary wing traffic may require Height and Course changes at any time.		
	09 / 27	1500M x 45M	Grooved Asphalt			
	15 / 33	1426M x 46M	Grooved Asphalt			
	06H / 24H	550M x 45M	Asphalt Helios only			
AIRSPACE	CLASS G	Transition level 6000ft	Airspace above EGPB CTA Sfc to FL10			
CIRCUITS	A1000ft	EXPECT all circuits to the South. LH 27, 24H. RH 09, 15, 33 , 06H. ATC may vary.				
NO FLY AREA	NO FIXED WING NIGHT LANDINGS on Runways 15/33 (except in emergency). The Village of Tobe to the North below A1500ft. Requires avoiding manoeuvre departing Runway 33.					
LOCAL HAZARDS	BIRDS especially local colonies of Sea Birds. UNLIT mast on Scousburgh Hill, 5nm N of A/F. A1085ft. A main road crosses the starter of runway 09. Road traffic is controlled by lights and barriers.					
SPECIAL RULES	Coastguard Helicopters have priority over ALL other traffic when on SAR operations, callsign "Coastguard Rescue" VFR A/C should contact ATC 12nm before zone entry.					
HELICOPTER OPERATIONS	Stands 3-11 are helicopter stands. ONLY ONE helicopter at any one time may hover-taxi on any one apron. Wheeled helicopters should always ground taxi. Do not enter 24H at Z until cleared to do so.					
REMARKS	<p>The North Taxiway occupies PART of the 45M wide pavement, It is angled at the north end. Centreline marked by green reflective studs. Unmarked area of pavement is unsuitable for A/C. The Sumberg CTA extends up to FL10 (A10,000ft) Thus all transits are under ATC control. VFR, Expect to transit via the takeoff coastline not below A2000ft (27 active, Eastern coastline). Group GA A/C should expect to park on CHARLIE apron as indicated below, unless ATC instructs otherwise</p> 					
VRPs	BODAM	N059.55.06	W001.16.06	PlanG	N59.9183333	W-1.2683333
	MOUSA	N006.00.00	W001.09.36	PlanG	N6.0000000	W-1.160000



Sumberg is a major centre for North Sea Helicopter operations. Above right is the published chart, left a graphic interpretation on PlanG. VFR A/C MUST follow ALL ATC instructions within the EGPB CTA. You should ensure you have the VOR active and in use when South of the A/P.

Make contact with APP (if on) or TWR WELL BEFORE CTA zone entry. - 12nm.

DO NOT ENTER THE CTA ZONE UNLESS CLEARED. VFR TRANSITS at A2000ft along the T/O coast/numbers.

